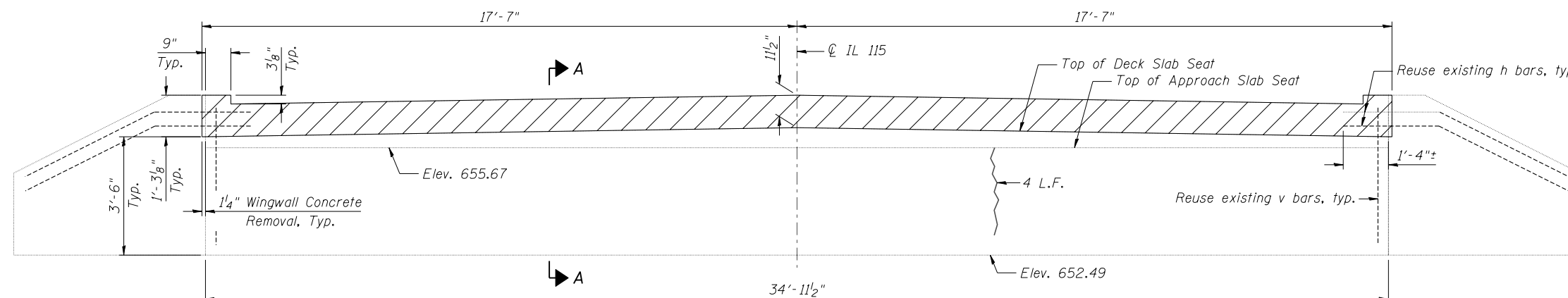
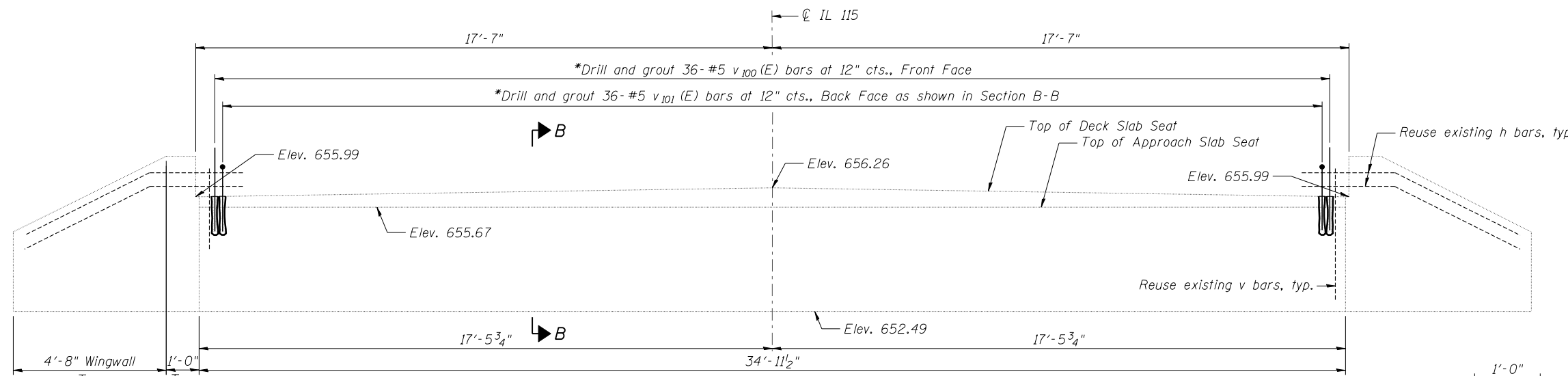


EXISTING NORTH ABUTMENT



EXISTING SOUTH ABUTMENT



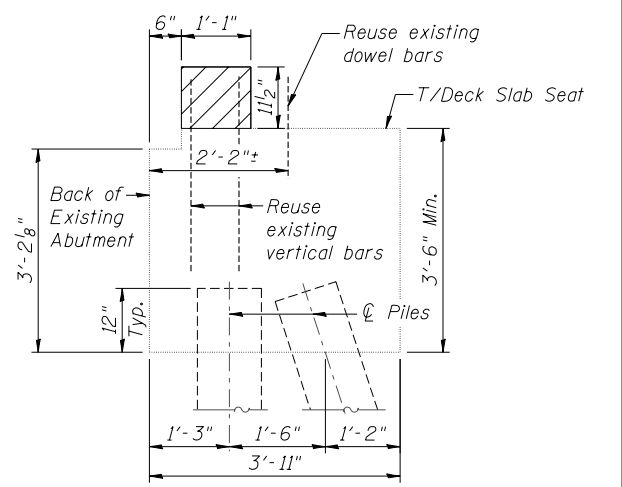
ABUTMENT ELEVATION, TYP.

*Drill and epoxy grout bars into existing concrete according to Section 584 of the Standard Specifications. Min. Embedment = 9" typ. Cost included with Reinforcement Bars, Epoxy Coated

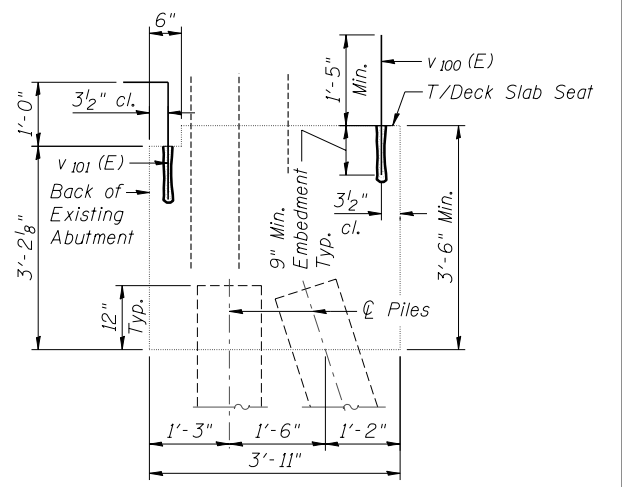
LEGEND

- Concrete Removal
- Structural Repair of Concrete (Depth Equal to or Less Than 5")
- Epoxy Crack Injection

Notes:
 Existing reinforcement and dowels shall be cleaned and incorporated into the new construction. Cost included with Concrete Removal.
 Repairs shown are based upon observations performed at the time of plan preparation and are for bidding purposes only. Actual areas to be repaired shall be determined by the Field Engineer at the time of construction.



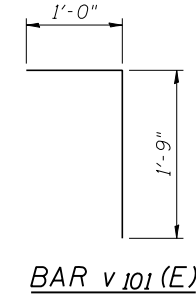
SECTION A-A



SECTION B-B

**TWO ABUTMENTS
BILL OF MATERIAL**

Bar	No.	Size	Length	Shape	
v ₁₀₀ (E)	72	#5	2'-2"	—	
v ₁₀₁ (E)	72	#5	2'-9"	└	
Reinforcement Bars, Epoxy Coated				Pound	370
Structure Excavation				Cu. Yd.	68
Concrete Removal				Cu. Yd.	2.8
Structural Repair of Concrete (Depth Equal to or Less Than 5")				Sq. Ft.	2
Epoxy Crack Injection				Foot	4



BAR v₁₀₁ (E)

FILE NAME = ...665980-SN0270073-012-AbutRepairs.dgn



USER NAME = SAW	DESIGNED - PM	REVISED -
PLOT SCALE = 0:2.0000 ' / IN.	CHECKED - JLA	REVISED -
PLOT DATE = 10/30/2012	DRAWN - SAW	REVISED -
	CHECKED - PM	REVISED -

**STATE OF ILLINOIS
DEPARTMENT OF TRANSPORTATION**

**ABUTMENT REPAIRS
S.N. 027-0073**

SHEET NO. SB-12 OF SB-13 SHEETS

F.A.P. RTE.	SECTION	COUNTY	TOTAL SHEETS	SHEET NO.
796	(106 BR-1 & BR-4)BR	FORD	78	31
CONTRACT NO. 66980				

ILLINOIS FED. AID PROJECT