

STRUCTURAL PAVEMENT DESIGN INFORMATION

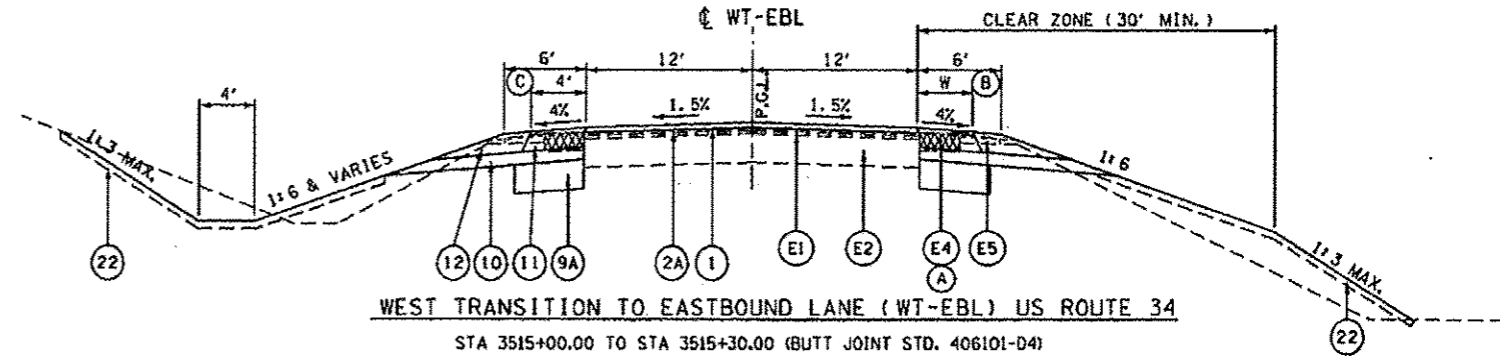
STRUCTURAL TRAFFIC: YEAR: 2024
 PV= 5001 SU= 375 MU= 1,000
 ROAD/STREET CLASSIFICATION: CLASS 1
 P= 78.43% S= 5.88% M= 15.69%
 TRAFFIC FACTOR: ACTUAL TF= 4.8
 MINIMUM TF= 7.1
 SUBGRADE SUPPORT RATING: SSR= POOR

PROPOSED LEGEND

- 1 POLYMERIZED HOT-MIX ASPHALT SURFACE COURSE, MIX D, N70 2"
- 2 POLYMERIZED HOT-MIX ASPHALT BINDER COURSE, IL-12.5, N70 2.25"
- 2A POLYMERIZED LEVELING BINDER (MACHINE METHOD), N70, DEPTH VARIES
- 3 HOT-MIX ASPHALT BINDER COURSE, IL-19.0, N70 8"
- ** 9A SUB-BASE GRANULAR MATERIAL, TYPE A, 12"
- ** 9B LIME MODIFIED SOIL 12"
- ** 10 EMBANKMENT
- 11 HOT-MIX ASPHALT SHOULDERS 8"
- 12 AGGREGATE SHOULDERS, TYPE B, 8"
- 12B AGGREGATE WEDGE SHOULDER, TYPE B
- 22 4" TOPSOIL PLACEMENT
- * 23 HMA PAVEMENT (FULL DEPTH), 12.25"

LEGEND NOTES:

- * ITEMS 1, 2, & 3 WILL BE PAID FOR AT THE CONTRACT UNIT PRICE PER SQUARE YARD FOR HMA PAVEMENT (FULL-DEPTH), 12.25"
- ** SUB-BASE GRANULAR MATERIAL IS REQUIRED AT: STA 1516+39.24 TO STA 1521+67.87 (WT-WBL) STA 3515+30.00 TO STA 3523+00.00 (WT-EBL) CONTRACTOR OPTION FOR SUBGRADE IMPROVEMENT METHOD AT ALL OTHER LOCATIONS
- *** PLACE ADDITIONAL SUB GRAN MAT A ABOVE 12" SUB GRAN MAT A TO BOTTOM OF HMA SHOULDER.



WEST TRANSITION TO EASTBOUND LANE (WT-EBL) US ROUTE 34

STA 3515+00.00 TO STA 3515+30.00 (BUTT JOINT STD. 406101-D4)
 STA 3515+30.00 TO STA 3516+39.24
 STA 3515+39.24 TO STA 3523+00.00 (PVT & LT SHLD ONLY)

NOTES:

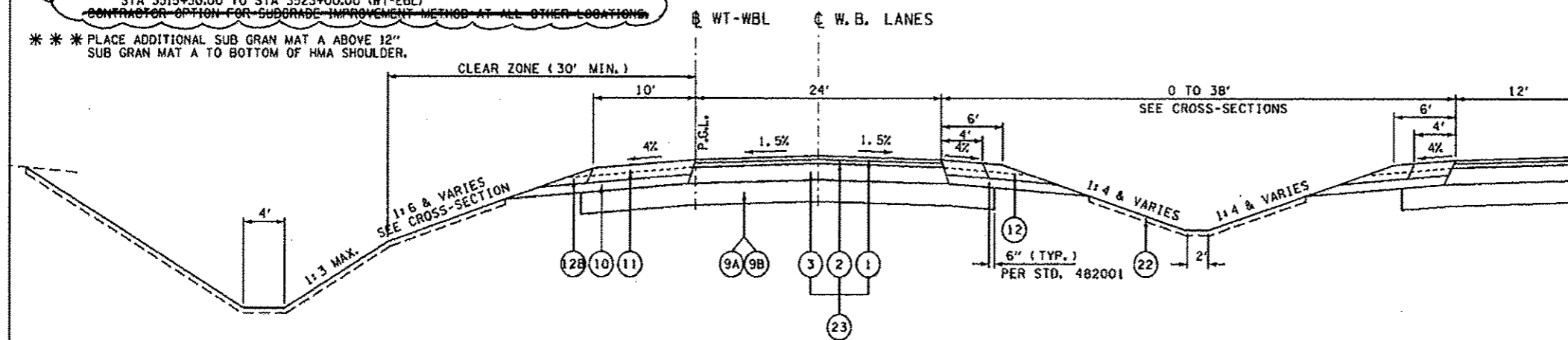
- (A) REMOVE EXISTING HMA SHOULDER.
- (B) RT HMA SHOULDER WIDTH TRANSITION RATE 1:60 STA 3515+30.00, W = 4' TO STA 3518+90.00, W = 10'
- (C) LT HMA SHOULDER WIDTH STA 3515+30.00 TO STA 3516+39.24, W = 4'

EXISTING LEGEND

- (E1) HOT-MIX ASPHALT OVERLAY - THICKNESS VARIES
- (E2) P.C.C. PAVEMENT (9-6-9)
- (E3) HOT-MIX ASPHALT BASE CSE/ BASE CSE WIDENING
- (E4) HOT-MIX ASPHALT SHOULDER
- (E5) AGGREGATE SHOULDERS

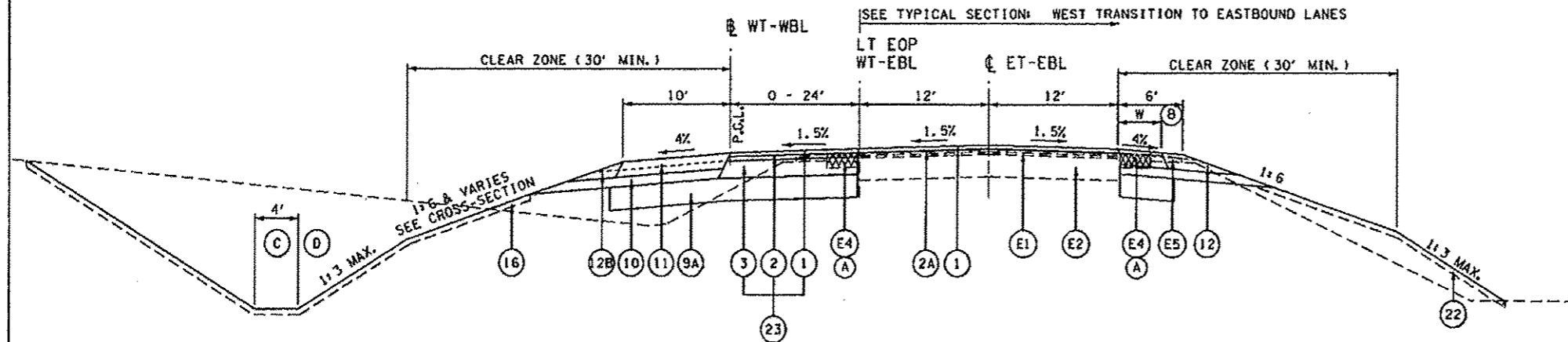
WEST TRANSITION TO WESTBOUND LANE (WT-WBL) US ROUTE 34

STA 1521+67.87 TO STA 1527+03.51



WEST TRANSITION TO WESTBOUND LANE (WT-WBL) US ROUTE 34

STA 1516+39.24 TO STA 1521+67.87



NOTES:

- (A) REMOVE EXISTING HMA SHOULDER.
- (B) SEE TYPICAL SECTION: EAST TRANSITION TO EASTBOUND LANE

REVISIED 1-8-13

FILE NAME: 0480485-DHT-08-TYP-U034-WEST.dgn	USER NAME: zsohl	DESIGNED: DBS	REVISED: -	STATE OF ILLINOIS DEPARTMENT OF TRANSPORTATION	TYPICAL SECTIONS WEST TRANSITION TO EXISTING US ROUTE 34		F.A.P. RTE.: 313	SECTION: 7-21 6-1	COUNTY: HENDERSON	TOTAL SHEETS: 976	SHEET NO.: 86	
PLOT SCALE: 1/8"=1'-0"	CHECKED: CSB	DATE: 10/2012	REVISED: -		SCALE: N.A.	SHEET NO. 6 OF 18 SHEETS	STA. TO STA.	CONTRACT NO. 68409 ILLINOIS FED. AID PROJECT				
PLOT DATE: 12/16/2012	DATE: 10/2012	REVISED: -	REVISED: -									