

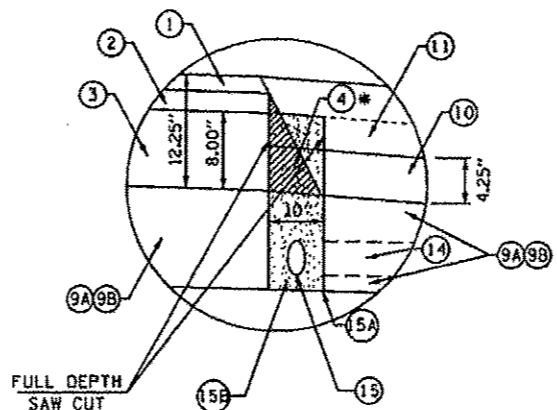
PROPOSED LEGEND

- 1 POLYMERIZED HOT-MIX ASPHALT SURFACE COURSE, MIX D, N70 2"
- 2 POLYMERIZED HOT-MIX ASPHALT BINDER COURSE, IL-12.5, N70 2.25"
- 3 HOT-MIX ASPHALT BINDER COURSE, IL-19.0, N70 8"
- 4 HOT-MIX ASPHALT WEDGE TO BE REMOVED PRIOR TRENCHING (INCLUDE IN COST OF PIPE UNDERDRAINS 4")
- ** 9A SUB-BASE GRANULAR MATERIAL, TYPE A, 12"
- ** 9B LIME MODIFIED SOIL 12"
- 10 EMBANKMENT
- 11 HOT-MIX ASPHALT SHOULDERS 8"
- 12 AGGREGATE SHOULDERS, TYPE B, 8"
- 12A AGGREGATE SHOULDERS, TYPE B, 6"
- 14 PIPE UNDERDRAIN 4" (SPECIAL) (STD 601201-D4) AT 1% SLOPE
- 15 4" PERFORATED CORRUGATED POLYETHYLENE TUBING @ 0.40% MIN. SLOPE (SEE PROP. UNDERDRAIN PROFILE SHEETS) (PAID FOR AS "PIPE UNDERDRAINS 4")
- 15A 10" TRENCH FOR PIPE UNDERDRAINS (STD 601001)
- 15B FA-4 OR FM-4 SAND (INCLUDE IN COST OF PIPE UNDERDRAINS 4")
- 16 CONCRETE HEADWALL FOR PIPE DRAIN (PER STD 601101)
- 22 4" TOPSOIL PLACEMENT
- * 23 HMA PAVEMENT (FULL DEPTH), 12.25"

LEGEND NOTES:

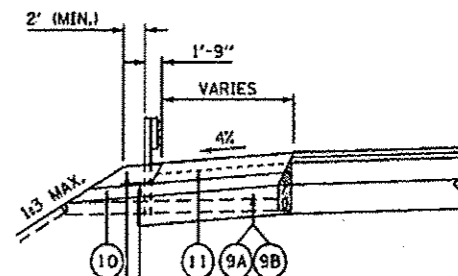
* ITEMS 1, 2, & 3 WILL BE PAID FOR AT THE CONTRACT UNIT PRICE PER SQUARE YARD FOR HMA PAVEMENT (FULL-DEPTH), 12.25"

* SUB-BASE GRANULAR MATERIAL IS REQUIRED AT VARIOUS LOCATIONS. SEE SCHEDULE. CONTRACTOR OPTION FOR DRAINAGE IMPROVEMENT METHODS AT ALL OTHER LOCATIONS.



US ROUTE 34 PIPE UNDERDRAIN DETAIL

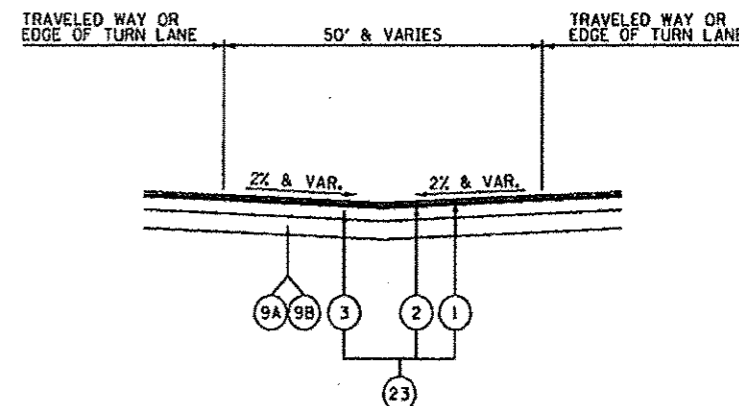
- * CONSTRUCT 3 OVER 9A OR 9B
- CONSTRUCT 10 OVER 9A OR 9B.
- CONSTRUCT 11 TO TOP OF 3
- REMOVE HMA WEDGE 4 WITH FULL DEPTH SAW CUT
- INSTALL PIPE UNDERDRAIN 14 15 15A 15B 16
- CONSTRUCT 1 2 AND 11
- * 10" TRENCH FOR PIPE UNDERDRAIN (PER STANDARD 601001) TO BE INSTALLED WITH LASER - GUIDED TRENCHER
- * EMBANKMENT TO SHALL BE PLACED ON TOP OF LIME MODIFIED SOIL AND COMPACTED PRIOR TO UNDERDRAIN INSTALLATION TO AVOID CONTAMINATION OF UNDERDRAIN TRENCH AND BACKFILL



GAURDRAIL EROSION CONTROL AGGREGATE
SEE STD 630101-D4
GEOTEXTILE FABRIC (STAPLED)

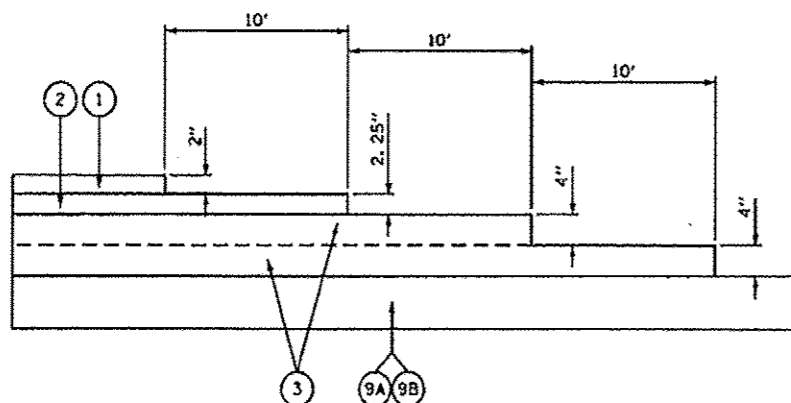
GUARDRAIL WITH EROSION CONTROL TREATMENT

SEE PLAN AND PROFILE SHEETS FOR GAURDRAIL LOCATIONS

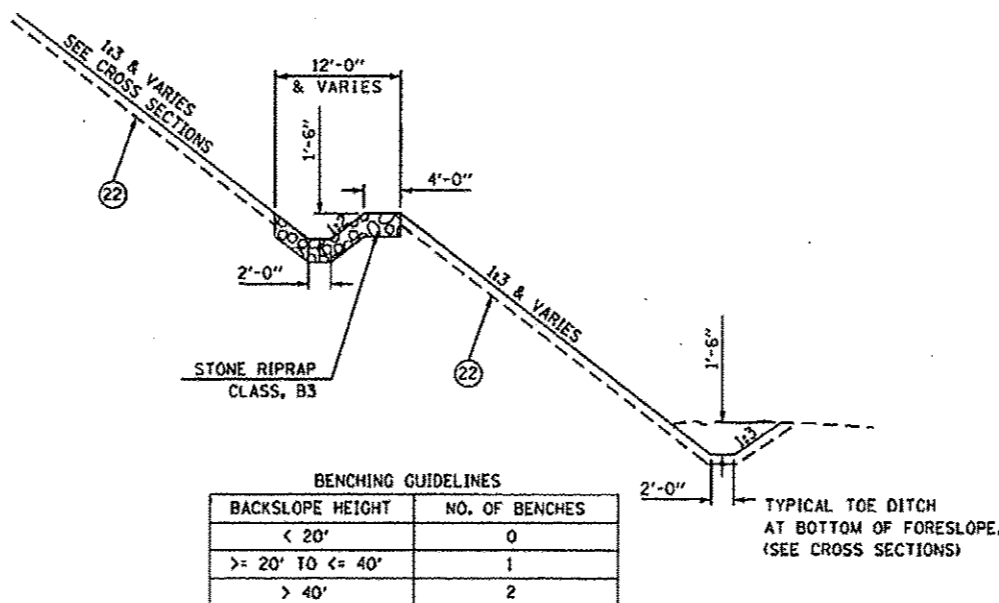


U.S. ROUTE 34 MEDIAN OPENING

REFER TO INTERSECTION DETAILS FOR CROSSOVER SLOPES AND ELEVATIONS.

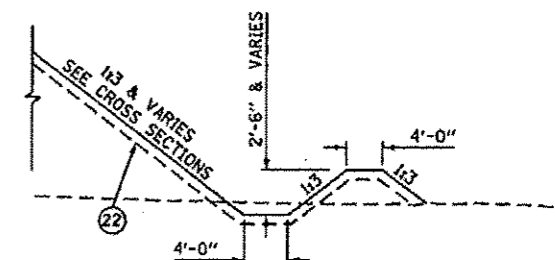


TYPICAL HOT-MIX ASHALT CONSTRUCTION JOINT



TYPICAL BENCH DITCH IN FORESLOPES

STA 742+00.00 TO STA 748+00.00 RT (US 34)



TOE OF SLOPE DITCH BERMS

SEE CROSS SECTIONS FOR EXACT LOCATIONS

REVISI 1-8-13

FILE NAME * D:\8469-DHT-14-TYP-DETAIL1.dgn	USER NAME * eohj	DESIGNED - OBS	REVISED -	STATE OF ILLINOIS DEPARTMENT OF TRANSPORTATION	TYPICAL SECTIONS DETAILS			F.A.P. RTE. 313	SECTION 7-2 & 6-1	COUNTY HENDERSON	TOTAL SHEETS 976	SHEET NO. 94
	PLOT SCALE * 100.0000 / 1"	DRAWN - PSBA	REVISED -		SCALE: N.A.	SHEET NO. 14 OF 18 SHEETS	STA.	TO STA.	CONTRACT NO. 68409			
	PLOT DATE * 10/18/2012	CHECKED - CSB	REVISED -		ILLINOIS FED. AID PROJECT							
		DATE - 10/2012	REVISED -									