

80/20 FED/ST

CONSTRUCTION CODE

CODE NO.	ITEM	UNIT	TOTAL QUANTITY	CONSTRUCTION CODE			
				ROADWAY 0001 RURAL LOSEC, 01	BRIDGE 0008 S.N. 036-0062, 0063 LOSEC, 01	BRIDGE 0008 S.N. 036-0065 LOSEC, 02	HIGHWAY LIGHTING 0021 RURAL LOSEC, 01
* 25000312	SEEDING, CLASS 4A	ACRE	123.75	123.75			
* 25000322	SEEDING, CLASS 5A	ACRE	123.75	123.75			
* 25000400	NITROGEN FERTILIZER NUTRIENT	POUND	5,868	5,868			
* 25000500	PHOSPHORUS FERTILIZER NUTRIENT	POUND	5,868	5,868			
* 25000600	POTASSIUM FERTILIZER NUTRIENT	POUND	5,868	5,868			
* 25000750	MOWING	ACRE	273	273			
* 25100115	MULCH, METHOD 2	ACRE	574	574			
* 25100630	EROSION CONTROL BLANKET	SO YD	342,336	342,336			
* 25100635	HEAVY DUTY EROSION CONTROL BLANKET	SO YD	2,377	2,377			
28000200	EARTH EXCAVATION FOR EROSION CONTROL	CU YD	24,024	24,024			
28000250	TEMPORARY EROSION CONTROL SEEDING	POUND	752,434	752,434			
28000305	TEMPORARY DITCH CHECKS	FOOT	34,456	34,456			
28000315	AGGREGATE DITCH CHECKS	TON	1,226	1,226			
28000400	PERIMETER EROSION BARRIER	FOOT	71,821	71,821			

\* DENOTES SPECIALTY ITEM

■ NON-PART (100% STATE), 01A00,01

▲ REVISED 1-8-13

FILE NAME : D:\68409\5HT-500.dgn	USER NAME : zechl	DESIGNED - DBS	REVISED -	<b>STATE OF ILLINOIS DEPARTMENT OF TRANSPORTATION</b>	<b>SUMMARY OF QUANTITIES US ROUTE 34</b>			F.A.P. RTE. 313	SECTION 7-2 ; 6-1	COUNTY HENDERSON	TOTAL SHEETS 976	SHEET NO. 6
PLOT SCALE = 40.0000' / 1" =	CHECKED - CSB	REVISED -	REVISED -		SCALE: N.A.	SHEET NO. 2 OF 25 SHEETS	STA.	TO STA.	CONTRACT NO. 68409			
PLOT DATE = 10/16/2012	DATE - 10/2012	REVISED -	REVISED -		ILLINOIS FED. AID PROJECT							



SEEDING AND EROSION CONTROL SCHEDULE (1 OF 2)											
LOCATION	SEEDING, CLASS 1A	SEEDING, CLASS 2A	SEEDING, CLASS 4A	SEEDING, CLASS 5A	NITROGEN FERTILIZER NUTRIENT	PHOSPHORUS FERTILIZER NUTRIENT	POTASSIUM FERTILIZER NUTRIENT	TEMPORARY EROSION CONTROL SEEDING	EROSION CONTROL BLANKET	HEAVY DUTY EROSION CONTROL BLANKET	MULCH, METHOD 2
	ACRE	ACRE	ACRE	ACRE	POUND	POUND	POUND	POUND	SQ YD	SO YD	ACRE
<b>US ROUTE 34</b>											
STA 512+00.00 TO STA 528+92.63	0.00	1.81	5.70	5.70	163	163	163	751	13,022	0	7.51
STA 528+92.63 TO STA 555+73.12	0.00	4.22	10.58	10.58	380	380	380	1,480	25,424	0	14.80
STA 555+73.12 TO STA 611+78.78	0.00	7.71	15.37	15.37	694	694	694	2,308	32,356	0	23.08
STA 611+78.78 TO STA 693+89.92	0.00	11.36	23.22	23.22	1,022	1,022	1,022	3,458	42,776	0	34.58
STA 693+89.92 TO STA 721+25.00	0.00	4.08	6.36	6.36	367	367	367	1,044	21,128	0	10.44
STA 721+25.00 TO STA 758+00.00	0.00	4.10	12.16	12.16	369	369	369	1,626	41,355	568	16.26
STA 758+00.00 TO STA 776+84.33	0.00	2.36	7.84	7.84	212	212	212	1,020	27,391	903	10.20
STA 776+84.33 TO STA 803+29.29	0.00	4.08	8.83	8.83	367	367	367	1,291	15,350	0	12.91
STA 803+29.29 TO STA 830+00.00	0.00	3.19	5.66	5.66	287	287	287	885	12,817	0	8.85
<b>IL ROUTE 94 / 116</b>											
STA 5+00.00 TO STA 26+70.22	2.35	0.63	4.27	4.27	268	268	268	725	11,520	0	7.25
STA 26+70.22 TO STA 46+00.00	0.00	1.26	5.50	5.50	113	113	113	676	10,835	0	6.76
<b>RAMP A</b>											
STA 6+50.00 TO STA 19+50.00	0.00	0.70	4.30	4.30	63	63	63	500	6,973	0	5.00
<b>RAMP B</b>											
STA 2+00.00 TO STA 11+50.00	0.00	0.59	3.59	3.59	53	53	53	418	6,307	0	4.18
<b>RAMP C</b>											
STA 7+00.00 TO STA 21+97.59	0.00	0.64	5.03	5.03	58	58	58	567	6,840	0	5.67
<b>RAMP D</b>											
STA 0+23.09 TO STA 11+00.00	0.00	0.52	3.39	3.39	47	47	47	391	6,662	0	3.91
<b>SUBTOTAL 1</b>	<b>2.35</b>	<b>47.25</b>	<b>121.80</b>	<b>121.80</b>	<b>4,463</b>	<b>4,463</b>	<b>4,463</b>	<b>17,140</b>	<b>280,756</b>	<b>1,471</b>	<b>171.40</b>

\*MULTIPLY BASE TOTAL BY 39 TO ACCOUNT FOR RESEEDING EVERY TWO WEEKS FOR 2 GROWING SEASONS (MARCH 1 - NOVEMBER 30)

△ REVISIED SHEET 1-8-13

FILE NAME * D:\68409-SHT-44-45-SEEDING.dgn	USER NAME * mikal	DESIGNED - DBS	REVISED -	<b>STATE OF ILLINOIS DEPARTMENT OF TRANSPORTATION</b>	<b>SCHEDULE OF QUANTITIES US ROUTE 34</b>			F.A.P. RTE. 313	SECTION 7-2 & 6-1	COUNTY HENDERSON	TOTAL SHEETS 976	SHEET NO. 73
	PLOT SCALE = 100.0000' / in.	DRAWN - PSBA	REVISED -		SCALE: N.A.	SHEET NO. 44 OF 51 SHEETS	STA.	TO STA.	ILLINOIS FED. AID PROJECT			
	PLOT DATE = 1/9/2013	CHECKED - CSB	REVISED -									
		DATE - 10/2012	REVISED -									



**STRUCTURAL PAVEMENT DESIGN INFORMATION**

STRUCTURAL TRAFFIC:	YEAR:	2024
PV= 5001	SU= 375	MU= 1,000
ROAD/STREET CLASSIFICATION:	CLASS	1
P= 78.43%	S= 5.88%	M= 15.69%
TRAFFIC FACTOR:	ACTUAL TF=	4.8
	MINIMUM TF=	7.1
SUBGRADE SUPPORT RATING:	SSR=	POOR

**PROPOSED LEGEND**

- 1 POLYMERIZED HOT-MIX ASPHALT SURFACE COURSE, MIX D, N70 2"
- 2 POLYMERIZED HOT-MIX ASPHALT BINDER COURSE, IL-12.5, N70 2.25"
- 3 HOT-MIX ASPHALT BINDER COURSE, IL-19.0, N70 8"
- \*\* 9A SUB-BASE GRANULAR MATERIAL, TYPE A, 12"
- \*\* 9B LIME MODIFIED SOIL 12"
- 10 EMBANKMENT
- 11 HOT-MIX ASPHALT SHOULDERS 8"
- 12 AGGREGATE SHOULDERS, TYPE B, 8"
- 12B AGGREGATE WEDGE SHOULDER, TYPE B
- 14 PIPE UNDERDRAIN 4" (SPECIAL) (STD 601201-D4) AT 1% SLOPE
- 15 4" PERFORATED CORRUGATED POLYETHYLENE TUBING @ 0.40% MIN. SLOPE (SEE PROP. UNDERDRAIN PROFILE SHEETS) (PAID FOR AS "PIPE UNDERDRAINS 4")
- 16 CONCRETE HEADWALL FOR PIPE DRAIN (PER STD 601101)
- 22 4" TOPSOIL PLACEMENT
- \* 23 HMA PAVEMENT (FULL DEPTH), 12.25"

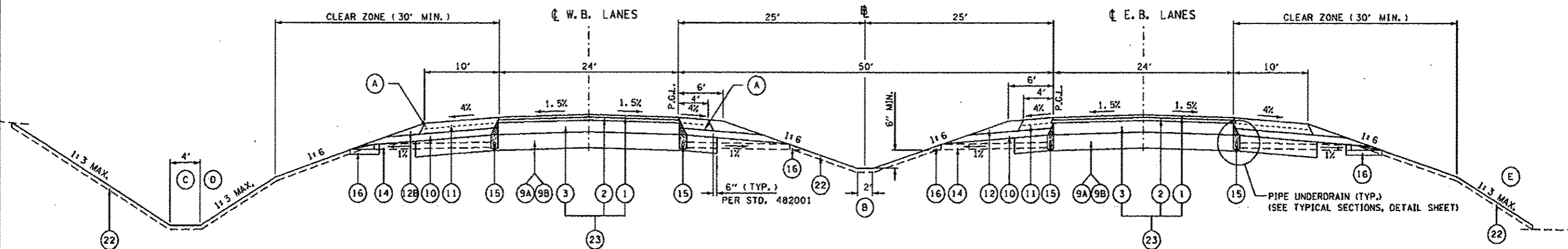
**LEGEND NOTES:**

\* ITEMS 1, 2, & 3 WILL BE PAID FOR AT THE CONTRACT UNIT PRICE PER SQUARE YARD FOR HMA PAVEMENT (FULL-DEPTH), 12.25"

\* SUB-BASE GRANULAR MATERIAL IS REQUIRED AT SELECTED LOCATIONS, SEE SCHEDULE. ~~CONTRACTOR OPTION FOR SUBGRADE IMPROVEMENT METHOD AT ALL OTHER LOCATIONS.~~

**CUT SECTION**

**FILL SECTION**



**US ROUTE 34 TANGENT SECTION**

STA 523+00.00 TO STA 523+30.60 (EB ONLY)  
 STA 561+18.12 TO STA 601+84.35  
 STA 619+08.45 TO STA 688+63.93  
 STA 727+95.41 TO STA 743+75.27  
 STA 754+25.00 TO STA 755+42.87  
 STA 755+42.87 TO STA 755+48.30 (EB ONLY)

**BRIDGE OMISSIONS**

(STA 755+42.87 TO STA 759+12.87) (SN 036-0063 WB)  
 (STA 755+48.30 TO STA 759+18.30) (SN 036-0062 EB)

STA 759+12.87 TO STA 759+18.30 (WB ONLY)  
 STA 759+18.30 TO STA 771+48.93  
 STA 808+42.68 TO STA 809+63.87 (WB ONLY)

**NOTES:**

- (A) CONSTRUCT HMA AND AGGREGATE SHOULDER UP TO TOP OF HMA BINDER COURSE 8" PRIOR TO PLACING 2.25" BINDER AND 2" SURFACE COURSES.
- (B) STANDARD MEDIAN DITCH DEPTH IS 3.24 FT. BELOW PROFILE GRADE LINE.
- (C) STANDARD OUTER DITCH DEPTH IS 5.00 FT. BELOW OUTSIDE EDGE OF PAVEMENT.
- (D) CONTINUE 1:6 FORESLOPE WHEN DITCH DEPTH IS 7.00 FT. OR LESS BELOW OUTSIDE EDGE OF PAVEMENT. USE 1:3 FORESLOPE OUTSIDE CLEAR ZONE (30') WHEN DITCH DEPTH IS GREATER THAN 7.00 FT.
- (E) SEE TYPICAL BENCH DETAIL IN FORESLOPE (WHERE APPLICABLE)

REVISION 1-B-13

FILE NAME * 0460489-SHT-02-TYP-US34-TANG.dgn	USER NAME * zschj	DESIGNED - OBS	REVISED -	<b>STATE OF ILLINOIS DEPARTMENT OF TRANSPORTATION</b>	<b>TYPICAL SECTIONS US ROUTE 34 - TANGENT</b>			F.A.P. RTE. 313	SECTION 7-2i 6-1	COUNTY HENDERSON	TOTAL SHEETS 976	SHEET NO. 82
PLDT SCALE * 1/8" = 1' / in.	CHECKED - CSB	REVISED -	REVISED -		SCALE: N.A.	SHEET NO. 2 OF 18 SHEETS	STA.	TO STA.	CONTRACT NO. 68409			
PLDT DATE * 10/16/2012	DATE - 10/2012	REVISED -	REVISED -		ILLINOIS FED. AID PROJECT							

**STRUCTURAL PAVEMENT DESIGN INFORMATION**

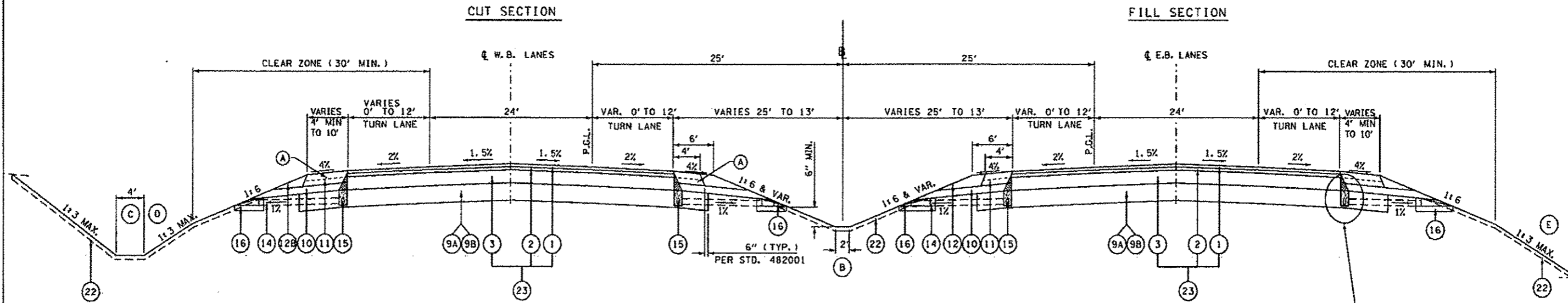
STRUCTURAL TRAFFIC: YEAR: 2024  
 PV= 5001 SU= 375 MU= 1.000  
 ROAD/STREET CLASSIFICATION: CLASS I  
 P= 78.43% S= 5.88% M= 15.69%  
 TRAFFIC FACTOR: ACTUAL TF= 4.8  
 MINIMUM TF= 7.1  
 SUBGRADE SUPPORT RATING: SSR= POOR

**PROPOSED LEGEND**

- 1 POLYMERIZED HOT-MIX ASPHALT SURFACE COURSE, MIX D, N70 2"
- 2 POLYMERIZED HOT-MIX ASPHALT BINDER COURSE, IL-12.5, N70 2.25"
- 3 HOT-MIX ASPHALT BINDER COURSE, IL-19.0, N70 8"
- \*\* 9A SUB-BASE GRANULAR MATERIAL, TYPE A, 12"
- \*\* 9B LIME MODIFIED SOIL 12"
- 10 EMBANKMENT
- 11 HOT-MIX ASPHALT SHOULDERS 8"
- 12 AGGREGATE SHOULDERS, TYPE B, 8"
- 12B AGGREGATE WEDGE SHOULDER, TYPE B
- 14 PIPE UNDERDRAIN 4" (SPECIAL) (STD 601201-D4) AT 1% SLOPE
- 15 4" PERFORATED CORRUGATED POLYETHYLENE TUBING @ 0.40% MIN. SLOPE (SEE PROP. UNDERDRAIN PROFILE SHEETS) (PAID FOR AS "PIPE UNDERDRAINS 4")
- 16 CONCRETE HEADWALL FOR PIPE DRAIN (PER STD 60110)
- 22 4" TOPSOIL PLACEMENT
- \* 23 HMA PAVEMENT (FULL DEPTH), 12.25"

**LEGEND NOTES:**

\* ITEMS 1, 2, & 3 WILL BE PAID FOR AT THE CONTRACT UNIT PRICE PER SQUARE YARD FOR HMA PAVEMENT (FULL-DEPTH), 12.25"  
 \*\* SUB-BASE GRANULAR MATERIAL IS REQUIRED AT SELECTED LOCATIONS. SEE SCHEDULE.  
~~CONTRACTOR OPTION FOR SURFACE IMPROVEMENT METHOD AT ALL OTHER LOCATIONS.~~



**US ROUTE 34 TANGENT SECTION WITH TURN LANES**

STA 523+30.60 TO STA 527+00.00 (EB ONLY)  
 STA 527+00.00 TO STA 533+33.05  
 STA 552+34.80 TO STA 561+18.12  
 STA 688+63.93 TO STA 698+53.45  
 STA 718+50.83 TO STA 727+95.41  
 STA 743+75.27 TO STA 754+25.00  
 STA 771+48.93 TO STA 779+31.42  
 STA 802+69.13 TO STA 805+99.12  
 STA 805+99.12 TO STA 808+42.68 (WB ONLY)

PIPE UNDERDRAIN (TYP)  
 (SEE TYPICAL SECTION, DETAIL SHEET)

**NOTES:**

- (A) CONSTRUCT HMA AND AGGREGATE SHOULDER UP TO TOP OF HMA BINDER COURSE 8" PRIOR TO PLACING 2.25" BINDER AND 2" SURFACE COURSES.
- (B) STANDARD MEDIAN DITCH DEPTH IS 3.24 FT. BELOW PROFILE GRADE LINE.
- (C) STANDARD OUTER DITCH DEPTH IS 5.00 FT. BELOW OUTSIDE EDGE OF PAVEMENT.
- (D) CONTINUE 1:6 FORESLOPE WHEN DITCH DEPTH IS 7.00 FT. OR LESS BELOW OUTSIDE EDGE OF PAVEMENT. USE 1:3 FORESLOPE OUTSIDE CLEAR ZONE (30') WHEN DITCH DEPTH IS GREATER THAN 7.00 FT.
- (E) SEE TYPICAL BENCH DETAIL IN FORESLOPE (WHERE APPLICABLE)

REVISION 1-8-13

FILE NAME: D468489-SHT-B3-TYP-US34-TANG-TURN.dgn	USER NAME: zeehl	DESIGNED: OBS	REVISED:	<b>STATE OF ILLINOIS DEPARTMENT OF TRANSPORTATION</b>	<b>TYPICAL SECTIONS US ROUTE 34 - TURN LANE TANGENT</b>			F.A.P. RTE. 313	SECTION 7-21 6-1	COUNTY HENDERSON	TOTAL SHEETS 976	SHEET NO. 83
PLOT SCALE: 1/8" = 1'-0"	CHECKED: CSB	REVISED:	SCALE: N.A.		SHEET NO. 3 OF 18 SHEETS	STA.	TO STA.	ILLINOIS FED. AID PROJECT CONTRACT NO. 68409				
PLOT DATE: 10/16/2012	DATE: 10/2012	REVISED:										

**STRUCTURAL PAVEMENT DESIGN INFORMATION**

STRUCTURAL TRAFFIC: YEAR: 2024  
 PV= 5001 SU= 375 MU= 1,000  
 ROAD/STREET CLASSIFICATION: CLASS I  
 P= 78.43% S= 5.88% M= 15.69%  
 TRAFFIC FACTOR: ACTUAL TF= 4.8  
 MINIMUM TF= 7.1  
 SUBGRADE SUPPORT RATING: SSR= POOR

**PROPOSED LEGEND**

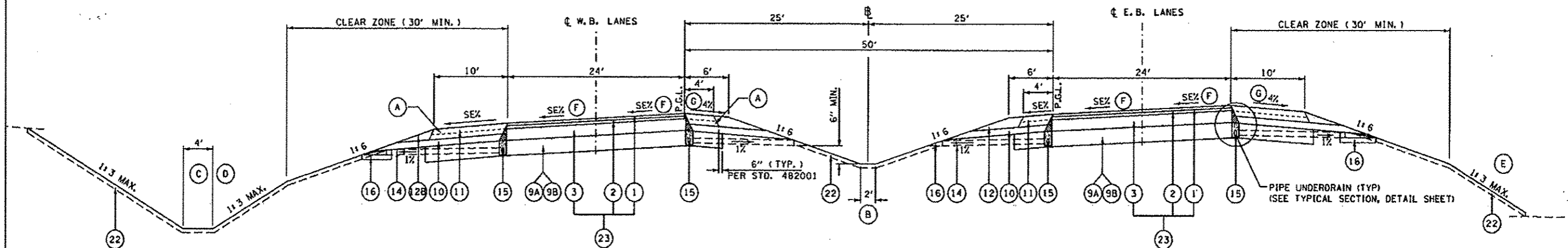
- 1 POLYMERIZED HOT-MIX ASPHALT SURFACE COURSE, MIX D, N70 2"
- 2 POLYMERIZED HOT-MIX ASPHALT BINDER COURSE, IL-12.5, N70 2.25"
- 3 HOT-MIX ASPHALT BINDER COURSE, IL-19.0, N70 8"
- \*\* 9A SUB-BASE GRANULAR MATERIAL, TYPE A, 12"
- \*\* 9B LIME MODIFIED SOIL 12"
- 10 EMBANKMENT
- 11 HOT-MIX ASPHALT SHOULDERS 8"
- 12 AGGREGATE SHOULDERS, TYPE B, 8"
- 12B AGGREGATE WEDGE SHOULDER, TYPE B
- 14 PIPE UNDERDRAIN 4" (SPECIAL) (STD 601201-D4) AT 1% SLOPE
- 15 4" PERFORATED CORRUGATED POLYETHYLENE TUBING @ 0.40% MIN. SLOPE (SEE PROP. UNDERDRAIN PROFILE SHEETS) (PAID FOR AS "PIPE UNDERDRAINS 4")
- 16 CONCRETE HEADWALL FOR PIPE DRAIN (PER STD 601101)
- 22 4" TOPSOIL PLACEMENT
- \* 23 HMA PAVEMENT (FULL DEPTH), 12.25"

**LEGEND NOTES:**

\* ITEMS 1, 2, & 3 WILL BE PAID FOR AT THE CONTRACT UNIT PRICE PER SQUARE YARD FOR HMA PAVEMENT (FULL-DEPTH), 12.25"  
 \*\* SUB-BASE GRANULAR MATERIAL IS REQUIRED AT SELECTED LOCATIONS. SEE SCHEDULE. CONTRACTOR OPTION FOR SUBGRADE IMPROVEMENT METHOD AT ALL OTHER LOCATIONS.

**CUT SECTION**

**FILL SECTION**



**US ROUTE 34 SUPERELEVATED SECTION**

STA 534+06.47 TO STA 550+33.11  
 STA 601+84.35 TO STA 619+08.45  
 STA 699+15.91 TO STA 714+56.72  
 STA 782+18.79 TO STA 798+04.58

**NOTES:**

- (A) CONSTRUCT HMA AND AGGREGATE SHOULDER UP TO TOP OF HMA BINDER COURSE 8" PRIOR TO PLACING 2.25" BINDER AND 2" SURFACE COURSES.
- (B) STANDARD MEDIAN DITCH DEPTH IS 3.24 FT. BELOW PROFILE GRADE LINE.
- (C) STANDARD OUTER DITCH DEPTH IS 5.00 FT. BELOW OUTSIDE EDGE OF PAVEMENT.
- (D) CONTINUE 1:6 FORESLOPE WHEN DITCH DEPTH IS 7.00 FT. OR LESS BELOW OUTSIDE EDGE OF PAVEMENT. USE 1:3 FORESLOPE OUTSIDE CLEAR ZONE (30') WHEN DITCH DEPTH IS GREATER THAN 7.00 FT.
- (E) SEE TYPICAL BENCH DETAIL IN FORESLOPE (WHERE APPLICABLE)
- (F) SEE SUPERELEVATION DETAIL SHEETS FOR SUPERELEVATION RATE AND TRANSITION.
- (G) IF S.E. IS GREATER THAN 4%, THEN SHOULDER SLOPE WILL VARY 8% MAXIMUM ROLLOVER.

REVISION 1-8-13

FILE NAME * D:\60409-6HT-04-TYP-US34-SE.dgn	USER NAME * zash	DESIGNED - DBS	REVISED -	<b>STATE OF ILLINOIS DEPARTMENT OF TRANSPORTATION</b>	<b>TYPICAL SECTIONS US ROUTE 34 - SUPERELEVATED</b>			F.A.P. RTE. 313	SECTION 7-2( 6-1)	COUNTY HENDERSON	TOTAL SHEETS 976	SHEET NO. 84
PLOT SCALE * 1/8" = 1'-0"	CHECKED - CSB	REVISED -	SCALE: N.A.		SHEET NO. 4 OF 18 SHEETS	STA.	TO STA.	CONTRACT NO. 60409				
PLOT DATE * 10/18/2012	DATE - 10/2012	REVISED -	ILLINOIS FED. AID PROJECT									

**STRUCTURAL PAVEMENT DESIGN INFORMATION**

STRUCTURAL TRAFFIC: YEAR: 2024  
 PV= 5001 SU= 375 MU= 1,000  
 ROAD/STREET CLASSIFICATION: CLASS 1  
 P= 78.43% S= 5.88% M= 15.69%  
 TRAFFIC FACTOR: ACTUAL TF= 4.8  
 MINIMUM TF= 7.1  
 SUBGRADE SUPPORT RATING: SSR= POOR

**PROPOSED LEGEND**

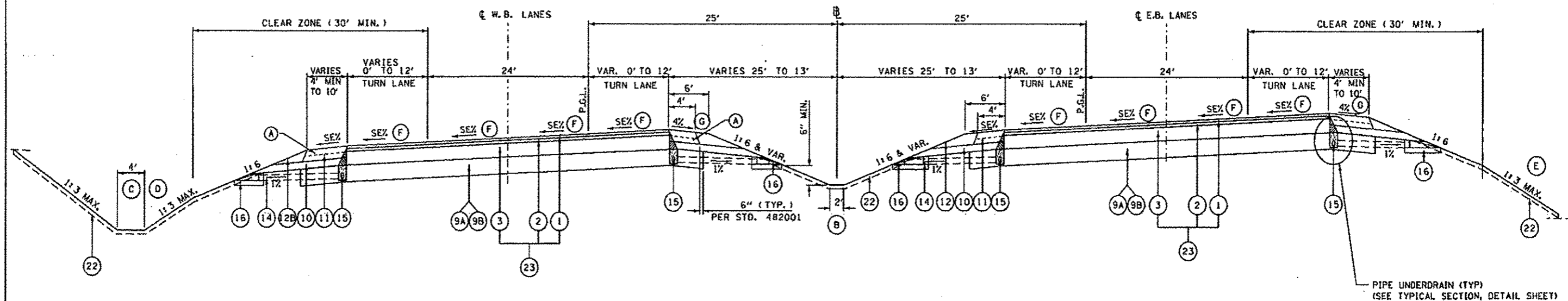
- 1 POLYMERIZED HOT-MIX ASPHALT SURFACE COURSE, MIX D, N70 2"
- 2 POLYMERIZED HOT-MIX ASPHALT BINDER COURSE, IL-12.5, N70 2.25"
- 3 HOT-MIX ASPHALT BINDER COURSE, IL-19.0, N70 8"
- \*\* 9A SUB-BASE GRANULAR MATERIAL, TYPE A, 12"
- \*\* 9B LIME MODIFIED SOIL 12"
- 10 EMBANKMENT
- 11 HOT-MIX ASPHALT SHOULDERS 8"
- 12 AGGREGATE SHOULDERS, TYPE B, 8"
- 12B AGGREGATE WEDGE SHOULDER, TYPE B
- 14 PIPE UNDERDRAIN 4" (SPECIAL) (STD 601201-D4) AT 1/2 SLOPE
- 15 4" PERFORATED CORRUGATED POLYETHYLENE TUBING @ 0.40% MIN. SLOPE (SEE PROP. UNDERDRAIN PROFILE SHEETS) (PAID FOR AS "PIPE UNDERDRAINS 4")
- 16 CONCRETE HEADWALL FOR PIPE DRAIN (PER STD 601101)
- 22 4" TOPSOIL PLACEMENT
- \* 23 HMA PAVEMENT (FULL DEPTH), 12.25"

**LEGEND NOTES:**

\* ITEMS 1, 2, & 3 WILL BE PAID FOR AT THE CONTRACT UNIT PRICE PER SQUARE YARD FOR HMA PAVEMENT (FULL-DEPTH), 12.25"  
 \*\* SUB-BASE GRANULAR MATERIAL IS REQUIRED AT SELECTED LOCATIONS. SEE SCHEDULE. CONTRACTOR OPTION FOR SUBGRADE IMPROVEMENT METHOD AT ALL OTHER LOCATIONS.

**CUT SECTION**

**FILL SECTION**



**US ROUTE 34 SUPERELEVATED SECTION WITH TURN LANES**

STA 533+33.05 TO STA 534+06.47  
 STA 550+33.11 TO STA 552+34.80  
 STA 698+53.45 TO STA 699+15.91  
 STA 714+56.72 TO STA 718+50.83  
 STA 779+31.42 TO STA 782+18.79  
 STA 798+04.58 TO STA 802+69.13

**NOTES:**

- (A) CONSTRUCT HMA AND AGGREGATE SHOULDER UP TO TOP OF HMA BINDER COURSE 8" PRIOR TO PLACING 2.25" BINDER AND 2" SURFACE COURSES.
- (B) STANDARD MEDIAN DITCH DEPTH IS 3.24 FT. BELOW PROFILE GRADE LINE.
- (C) STANDARD OUTER DITCH DEPTH IS 5.00 FT. BELOW OUTSIDE EDGE OF PAVEMENT.
- (D) CONTINUE 1:6 FORESLOPE WHEN DITCH DEPTH IS 7.00 FT. OR LESS BELOW OUTSIDE EDGE OF PAVEMENT. USE 1:3 FORESLOPE OUTSIDE CLEAR ZONE (30') WHEN DITCH DEPTH IS GREATER THAN 7.00 FT.
- (E) SEE TYPICAL BENCH DETAIL IN FORESLOPE (WHERE APPLICABLE)
- (F) SEE SUPERELEVATION DETAIL SHEETS FOR SUPERELEVATION RATE AND TRANSITION.
- (G) IF S.E. IS GREATER THAN 4%, THEN SHOULDER SLOPE WILL VARY 8% MAXIMUM ROLLOVER.

REVISI 1-8-13

FILE NAME * 0468489-SHT-05-TYP-034-02-TURN.dgn	USER NAME * zeah1	DESIGNED - OBS	REVISED -	<b>STATE OF ILLINOIS DEPARTMENT OF TRANSPORTATION</b>	<b>TYPICAL SECTIONS US ROUTE 34 - TURN LANE SUPERELEVATED</b>			F.A.P. RTE. 313	SECTION 7-21 6-1	COUNTY HENDERSON	TOTAL SHEETS 976	SHEET NO. 85
PLOT SCALE * 1/8"=1'-0"	CHECKED - CSB	REVISI -	REVISI -		SCALE: N.A.	SHEET NO. 5 OF 18 SHEETS	STA.	TO STA.	CONTRACT NO. 68409			
PLOT DATE * 10/16/2012	DATE - 10/2012	REVISI -	REVISI -		ILLINOIS FED. AID PROJECT							



**STRUCTURAL PAVEMENT DESIGN INFORMATION**

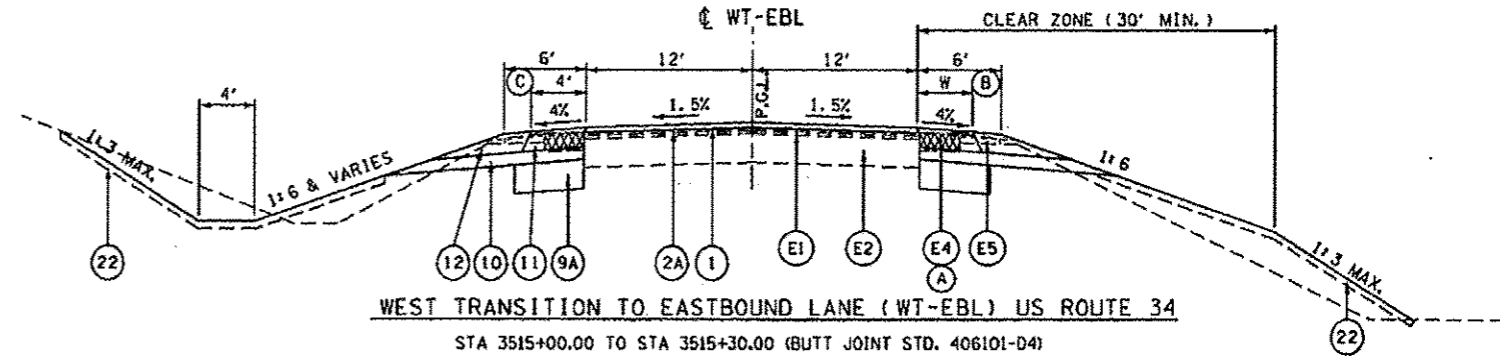
STRUCTURAL TRAFFIC: YEAR: 2024  
 PV= 5001 SU= 375 MU= 1,000  
 ROAD/STREET CLASSIFICATION: CLASS 1  
 P= 78.43% S= 5.88% M= 15.69%  
 TRAFFIC FACTOR: ACTUAL TF= 4.8  
 MINIMUM TF= 7.1  
 SUBGRADE SUPPORT RATING: SSR= POOR

**PROPOSED LEGEND**

- 1 POLYMERIZED HOT-MIX ASPHALT SURFACE COURSE, MIX D, N70 2"
- 2 POLYMERIZED HOT-MIX ASPHALT BINDER COURSE, IL-12.5, N70 2.25"
- 2A POLYMERIZED LEVELING BINDER (MACHINE METHOD), N70, DEPTH VARIES
- 3 HOT-MIX ASPHALT BINDER COURSE, IL-19.0, N70 8"
- \*\* 9A SUB-BASE GRANULAR MATERIAL, TYPE A, 12"
- \*\* 9B LIME MODIFIED SOIL 12"
- \*\* 10 EMBANKMENT
- 11 HOT-MIX ASPHALT SHOULDERS 8"
- 12 AGGREGATE SHOULDERS, TYPE B, 8"
- 12B AGGREGATE WEDGE SHOULDER, TYPE B
- 22 4" TOPSOIL PLACEMENT
- \* 23 HMA PAVEMENT (FULL DEPTH), 12.25"

**LEGEND NOTES:**

- \* ITEMS 1, 2, & 3 WILL BE PAID FOR AT THE CONTRACT UNIT PRICE PER SQUARE YARD FOR HMA PAVEMENT (FULL-DEPTH), 12.25"
- \*\* SUB-BASE GRANULAR MATERIAL IS REQUIRED AT: STA 1516+39.24 TO STA 1521+67.87 (WT-WBL) STA 3515+30.00 TO STA 3523+00.00 (WT-EBL) CONTRACTOR OPTION FOR SUBGRADE IMPROVEMENT METHOD AT ALL OTHER LOCATIONS
- \*\*\* PLACE ADDITIONAL SUB GRAN MAT A ABOVE 12" SUB GRAN MAT A TO BOTTOM OF HMA SHOULDER.



**WEST TRANSITION TO EASTBOUND LANE (WT-EBL) US ROUTE 34**  
 STA 3515+00.00 TO STA 3515+30.00 (BUTT JOINT STD. 406101-D4)  
 STA 3515+30.00 TO STA 3516+39.24  
 STA 3515+39.24 TO STA 3523+00.00 (PVT & LT SHLD ONLY)

**NOTES:**

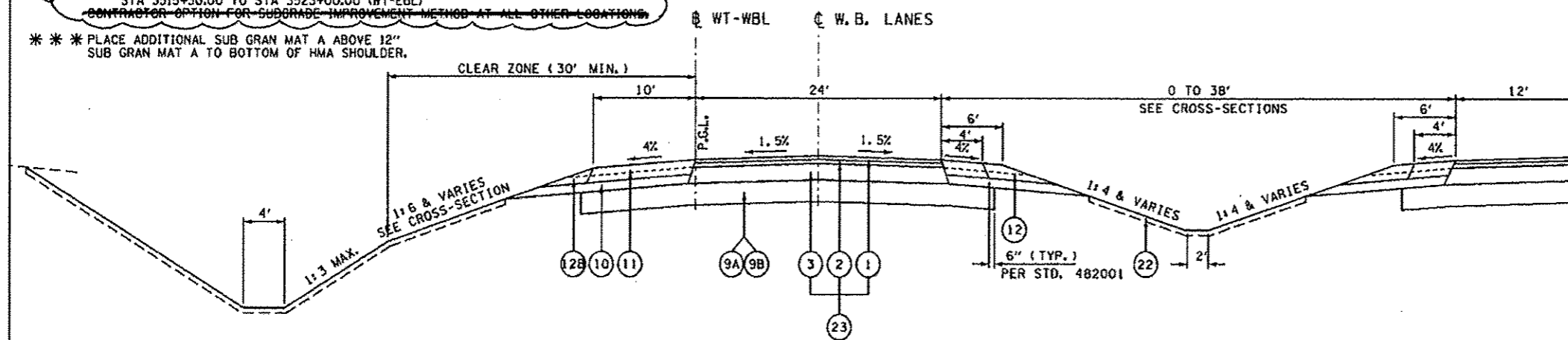
- (A) REMOVE EXISTING HMA SHOULDER.
- (B) RT HMA SHOULDER WIDTH TRANSITION RATE 1:60 STA 3515+30.00, W = 4' TO STA 3518+90.00, W = 10'
- (C) LT HMA SHOULDER WIDTH STA 3515+30.00 TO STA 3516+39.24, W = 4'

**EXISTING LEGEND**

- (E1) HOT-MIX ASPHALT OVERLAY - THICKNESS VARIES
- (E2) P.C.C. PAVEMENT (9-6-9)
- (E3) HOT-MIX ASPHALT BASE CSE/ BASE CSE WIDENING
- (E4) HOT-MIX ASPHALT SHOULDER
- (E5) AGGREGATE SHOULDERS

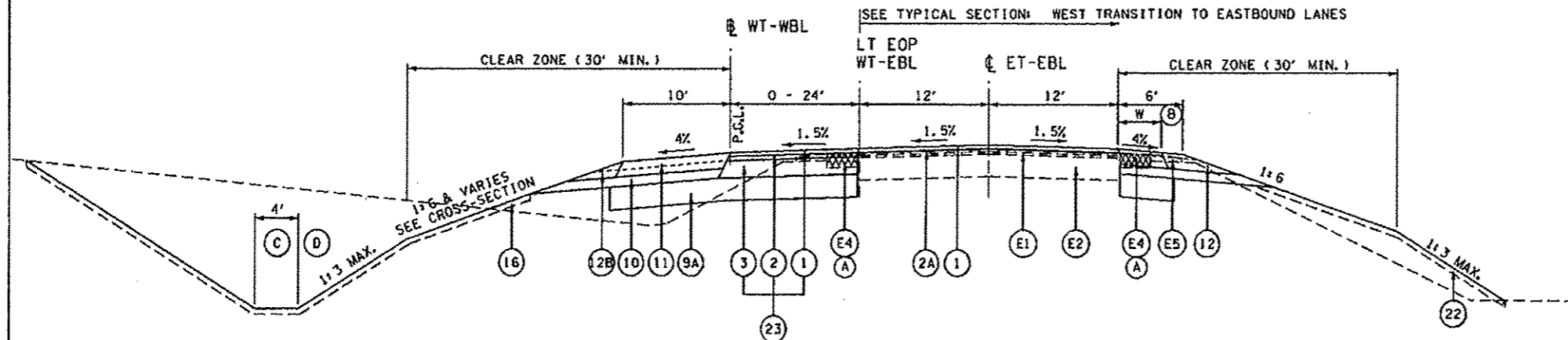
**WEST TRANSITION TO WESTBOUND LANE (WT-WBL) US ROUTE 34**

STA 1521+67.87 TO STA 1527+03.51



**WEST TRANSITION TO WESTBOUND LANE (WT-WBL) US ROUTE 34**

STA 1516+39.24 TO STA 1521+67.87



**NOTES:**

- (A) REMOVE EXISTING HMA SHOULDER.
- (B) SEE TYPICAL SECTION: EAST TRANSITION TO EASTBOUND LANE

REVISI 1-8-13

FILE NAME: 0480489-DHT-08-TYP-U034-WEST.dgn	USER NAME: zsohl	DESIGNED: DBS	REVISED:	<b>STATE OF ILLINOIS DEPARTMENT OF TRANSPORTATION</b>	<b>TYPICAL SECTIONS WEST TRANSITION TO EXISTING US ROUTE 34</b>		F.A.P. RTE.: 313	SECTION: 7-21 6-1	COUNTY: HENDERSON	TOTAL SHEETS: 976	SHEET NO.: 86	
PLOT SCALE: 1/8"=1'-0"	CHECKED: CSB	DATE: 10/2012	REVISED:		SCALE: N.A.	SHEET NO. 6 OF 18 SHEETS	STA. TO STA.	CONTRACT NO. 68409 ILLINOIS FED. AID PROJECT				
PLOT DATE: 12/16/2012	DATE: 10/2012	REVISED:	REVISED:									

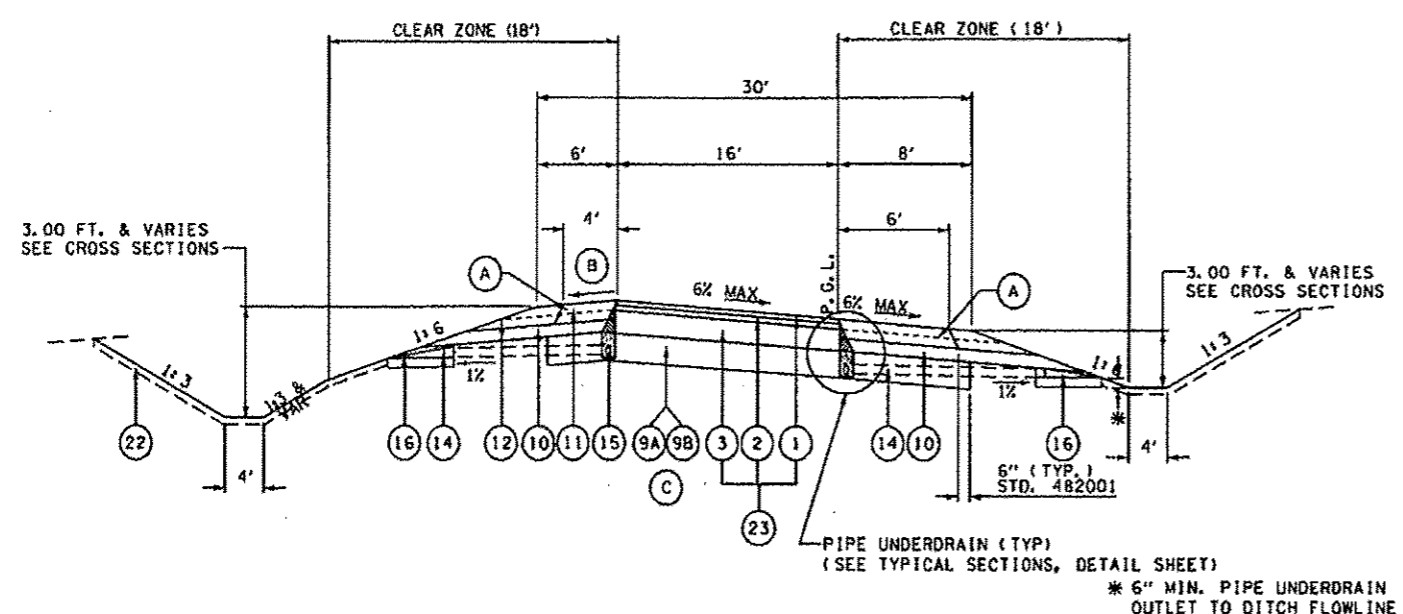




- PROPOSED LEGEND**
- 1 POLYMERIZED HOT-MIX ASPHALT SURFACE COURSE, MIX D, N70 2"
  - 2 POLYMERIZED HOT-MIX ASPHALT BINDER COURSE, IL-19.0, N70 2.25"
  - 3 HOT-MIX ASPHALT BINDER COURSE, IL-12.5, N70 8"
  - \*\* 9A SUB-BASE GRANULAR MATERIAL, TYPE A, 12"
  - \*\* 9B LIME MODIFIED SOIL 12"
  - \*\* 10 EMBANKMENT
  - 11 HOT-MIX ASPHALT SHOULDERS 8"
  - 12 AGGREGATE SHOULDERS, TYPE B, 8"
  - 14 PIPE UNDERDRAIN 4" (SPECIAL) (STD 601201-D4) AT 1% SLOPE
  - 15 4" PERFORATED CORRUGATED POLYETHYLENE TUBING @ 0.40% MIN. SLOPE (SEE PROP. UNDERDRAIN PROFILE SHEETS) (PAID FOR AS "PIPE UNDERDRAINS 4")
  - 16 CONCRETE HEADWALL FOR PIPE DRAIN (PER STD 601101)
  - 22 4" TOPSOIL PLACEMENT
  - \* 23 HMA PAVEMENT (FULL DEPTH), 12.25"

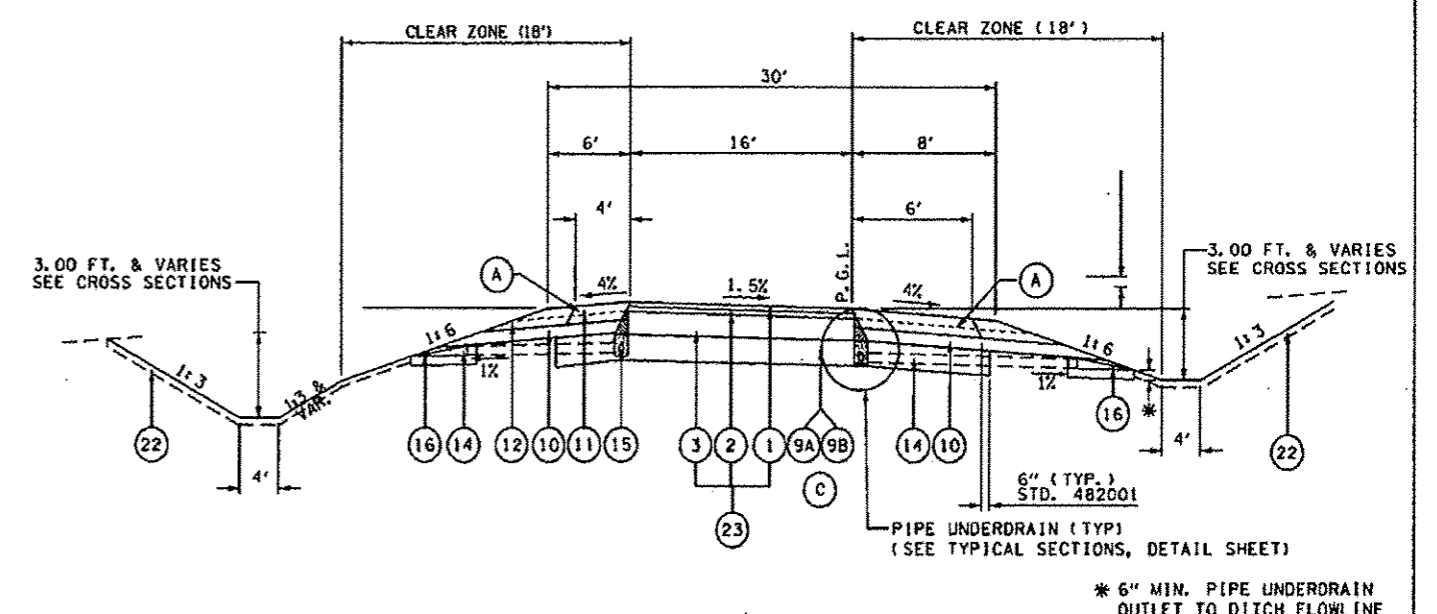
**LEGEND NOTES:**

- \* ITEMS 1, 2, & 3 WILL BE PAID FOR AT THE CONTRACT UNIT PRICE PER SQUARE YARD FOR HMA PAVEMENT (FULL-DEPTH), 12.25"
- \*\* SUB-BASE GRANULAR MATERIAL IS REQUIRED AT:  
STA 1516+39.24 TO STA 1521+67.87 (WT-WBL)  
STA 3515+30.00 TO STA 3523+00.00 (WT-EBL)  
~~CONTRACTOR OPTION FOR SUBGRADE IMPROVEMENT METHOD AT ALL OTHER LOCATIONS.~~
- \*\* PLACE ADDITIONAL SUB GRAN MAT A ABOVE 12" SUB GRAN MAT A TO BOTTOM OF HMA SHOULDER.



**TYPICAL RAMP - SUPERELEVATED SECTION**

RAMP A	RAMP C
STA 7+20.00 TO STA 13+61.00	STA 7+23.00 TO STA 13+58.00
STA 16+51.00 TO STA 20+96.00	STA 15+60.00 TO STA 20+97.00
RAMP B	RAMP D
STA 1+37.00 TO STA 15+81.63	STA 8+67.00 TO STA 15+98.35



**TYPICAL RAMP - TANGENT SECTION**

RAMP A	RAMP C
STA 0+00.00 TO STA 7+20.00	STA 0+00.00 TO STA 7+23.00
STA 13+61.00 TO STA 16+51.00	STA 13+58.00 TO STA 15+60.00
STA 20+96.00 TO STA 21+74.32	STA 20+97.00 TO STA 21+97.59
RAMP B	RAMP D
STA 0+23.35 TO STA 1+37.00	STA 0+23.09 TO STA 8+67.00
STA 15+81.63 TO STA 24+31.78	STA 15+98.35 TO STA 24+48.52

- NOTES:**
- (A) CONSTRUCT HMA AND AGGREGATE SHOULDER UP TO TOP OF HMA BINDER COURSE 8" PRIOR TO PLACING 2.25" BINDER AND 2" SURFACE COURSES.
  - (B) MAXIMUM ROLLOVER = 8%
  - (C) CONTRACTORS OPTION FOR SUBGRADE IMPROVEMENT METHOD.

REVISI 1-8-13

FILE NAME * D:\68489-SHT-09-TYP-RAMPS.dgn	USER NAME * eeahl	DESIGNED - DBS	REVISED -	<b>STATE OF ILLINOIS DEPARTMENT OF TRANSPORTATION</b>	<b>TYPICAL SECTIONS INTERCHANGE RAMPS</b>			F.A.P. RTE. 313	SECTION 7-2   6-1	COUNTY HENDERSON	TOTAL SHEETS 976	SHEET NO. 89
	PLOT SCALE = 100.0000' / 1"	DRAWN - P5BA	REVISED -		SCALE: N.A.	SHEET NO. 9 OF 18 SHEETS	STA.	TO STA.	ILLINOIS FED. AID PROJECT			
	PLOT DATE = 10/16/2012	CHECKED - CSB	REVISED -									
		DATE - 10/2012	REVISED -									

PROPOSED LEGEND

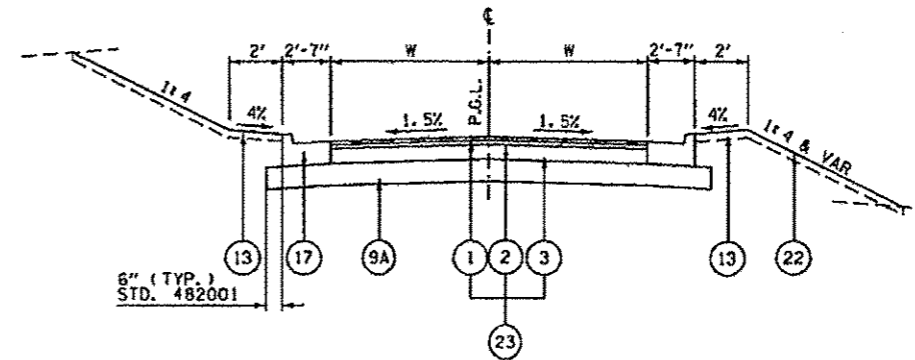
- 1 POLYMERIZED HOT-MIX ASPHALT SURFACE COURSE, MIX D, N70 2"
- 2 POLYMERIZED HOT-MIX ASPHALT BINDER COURSE, IL-19.8, N70 2.25"
- 3 HOT-MIX ASPHALT BINDER COURSE, IL-19.0, N50 8"
- 5 BITUMINOUS MATERIALS (COVER AND SEAL COATS), A3
- \*\* 9A SUB-BASE GRANULAR MATERIAL, TYPE A, 12"
- \*\* 9B LIME MODIFIED SOIL 12"
- 12 AGGREGATE SHOULDERS, TYPE B, 8"
- 13 EARTHEN SHOULDER
- \*\*\* 17 CONCRETE CURB & GUTTER, TYPE B-6.24
- 22 4" TOPSOIL PLACEMENT
- \* 23 HMA PAVEMENT (FULL DEPTH), 12.25"

LEGEND NOTES:

\* ITEMS 1, 2, & 3 WILL BE PAID FOR AT THE CONTRACT UNIT PRICE PER SQUARE YARD FOR HMA PAVEMENT (FULL-DEPTH), 12.25"

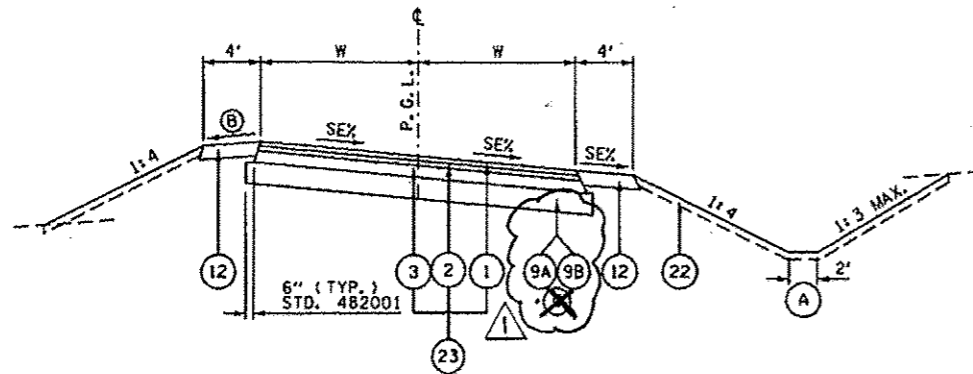
\*\*\* SUB-BASE GRANULAR MATERIAL IS REQUIRED AT:  
 STA 58+00.00 TO STA 71+02.50 (TR 150)  
~~CONTRACTOR OPTION FOR SUBGRADE IMPROVEMENT METHOD AT ALL OTHER LOCATIONS.~~

\*\*\* TYPE B-6.24 GUTTER SHALL BE THICKNESS OF PAVEMENT



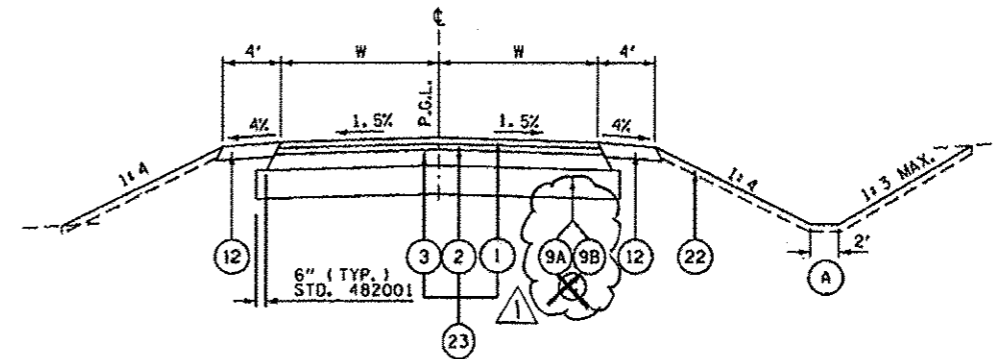
TOWNSHIP ROAD - TANGENT SECTION (HMA) CURB

TR 150 (1700 E) W = 13'  
 STA 66+50.00 TO STA 66+98.73 LT  
 STA 66+98.73 TO STA 71+02.50



TOWNSHIP ROAD - SUPERELEVATED SECTION (HMA)

BOGUS HOLLOW ROAD (1350 E) W = 12'  
 STA 5+70.00 TO 8+23.67  
 TR 150 (1700 E) W = 12'  
 STA 51+41.52 TO STA 56+90.36



TOWNSHIP ROAD - TANGENT SECTION (HMA)

TR 94 (1400 E) W = 12'  
 STA 51+29.37 TO STA 54+30.12  
 TR 150 (1700 E) W = 12'  
 STA 56+90.36 TO STA 66+50.00  
 STA 66+50.00 TO STA 66+98.73 RT  
 TR 178 (1800 E) W = 12'  
 STA 51+41.52 TO STA 53+75.62

NOTES:

(A) STANDARD DITCH DEPTH 3.00 FT. BELOW OUTER EDGE OF SHOULDER & VARIES. SEE CROSS SECTIONS

(B) MAXIMUM SHOULDER ROLLOVER IS 8%

(C) ~~CONTRACTOR OPTION FOR SUBGRADE IMPROVEMENT METHOD EXCEPT WHERE NOTED.~~

REVISION 1-8-13

FILE NAME * 0468489-SHT-11-TYP-B10E901-10-4.dgn	USER NAME * zsohl	DESIGNED - DBS	REVISED -	<b>STATE OF ILLINOIS DEPARTMENT OF TRANSPORTATION</b>	<b>TYPICAL SECTIONS TOWNSHIP &amp; LOCAL ROADS - HOT-MIX ASPHALT</b>			F.A.P. RTE. 313	SECTION 7-2 1 6-1	COUNTY HENDERSON	TOTAL SHEETS 976	SHEET NO. 91
	PLOT SCALE * 1/8" = 1'-0"	DRAWN - PSBA	REVISED -		SCALE: N.A.	SHEET NO. 11 OF 18 SHEETS	STA.	TO STA.	CONTRACT NO. 68409			
	PLOT DATE * 10/16/2012	CHECKED - CSB	REVISED -		ILLINOIS FED. AID PROJECT							
		DATE - 10/2012	REVISED -									

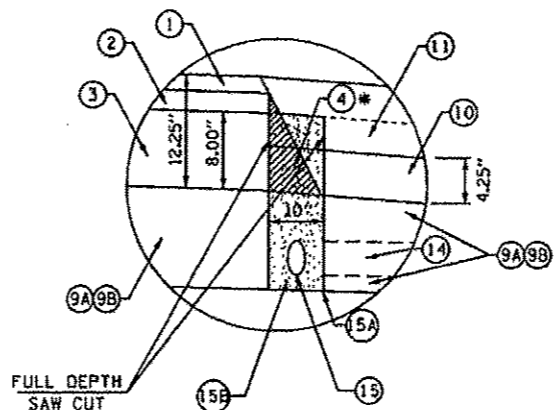
PROPOSED LEGEND

- 1 POLYMERIZED HOT-MIX ASPHALT SURFACE COURSE, MIX D, N70 2"
- 2 POLYMERIZED HOT-MIX ASPHALT BINDER COURSE, IL-12.5, N70 2.25"
- 3 HOT-MIX ASPHALT BINDER COURSE, IL-19.0, N70 8"
- 4 HOT-MIX ASPHALT WEDGE TO BE REMOVED PRIOR TRENCHING (INCLUDE IN COST OF PIPE UNDERDRAINS 4")
- \*\* 9A SUB-BASE GRANULAR MATERIAL, TYPE A, 12"
- \*\* 9B LIME MODIFIED SOIL 12"
- 10 EMBANKMENT
- 11 HOT-MIX ASPHALT SHOULDERS 8"
- 12 AGGREGATE SHOULDERS, TYPE B, 8"
- 12A AGGREGATE SHOULDERS, TYPE B, 6"
- 14 PIPE UNDERDRAIN 4" (SPECIAL) (STD 601201-D4) AT 1% SLOPE
- 15 4" PERFORATED CORRUGATED POLYETHYLENE TUBING @ 0.40% MIN. SLOPE (SEE PROP. UNDERDRAIN PROFILE SHEETS) (PAID FOR AS "PIPE UNDERDRAINS 4")
- 15A 10" TRENCH FOR PIPE UNDERDRAINS (STD 601001)
- 15B FA-4 OR FM-4 SAND (INCLUDE IN COST OF PIPE UNDERDRAINS 4")
- 16 CONCRETE HEADWALL FOR PIPE DRAIN (PER STD 601101)
- 22 4" TOPSOIL PLACEMENT
- \* 23 HMA PAVEMENT (FULL DEPTH), 12.25"

LEGEND NOTES:

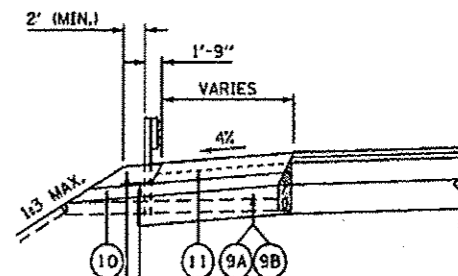
\* ITEMS 1, 2, & 3 WILL BE PAID FOR AT THE CONTRACT UNIT PRICE PER SQUARE YARD FOR HMA PAVEMENT (FULL-DEPTH), 12.25"

\* SUB-BASE GRANULAR MATERIAL IS REQUIRED AT VARIOUS LOCATIONS. SEE SCHEDULE. CONTRACTOR OPTION FOR DRAINAGE IMPROVEMENT METHODS AT ALL OTHER LOCATIONS.



US ROUTE 34 PIPE UNDERDRAIN DETAIL

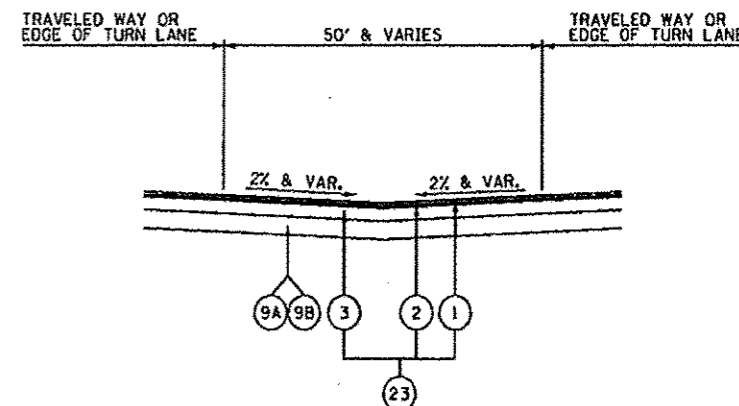
- \* CONSTRUCT 3 OVER 9A OR 9B
- CONSTRUCT 10 OVER 9A OR 9B.
- CONSTRUCT 11 TO TOP OF 3
- REMOVE HMA WEDGE 4 WITH FULL DEPTH SAW CUT
- INSTALL PIPE UNDERDRAIN 14 15 15A 15B 16
- CONSTRUCT 1 2 AND 11
- \* 10" TRENCH FOR PIPE UNDERDRAIN (PER STANDARD 601001) TO BE INSTALLED WITH LASER - GUIDED TRENCHER
- \* EMBANKMENT TO SHALL BE PLACED ON TOP OF LIME MODIFIED SOIL AND COMPACTED PRIOR TO UNDERDRAIN INSTALLATION TO AVOID CONTAMINATION OF UNDERDRAIN TRENCH AND BACKFILL



GAURDRAIL EROSION CONTROL AGGREGATE  
SEE STD 630101-D4  
GEOTEXTILE FABRIC (STAPLED)

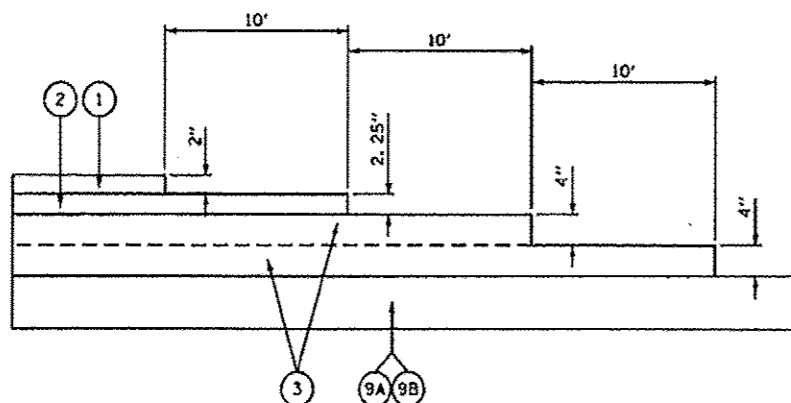
GUARDRAIL WITH EROSION CONTROL TREATMENT

SEE PLAN AND PROFILE SHEETS FOR GAURDRAIL LOCATIONS

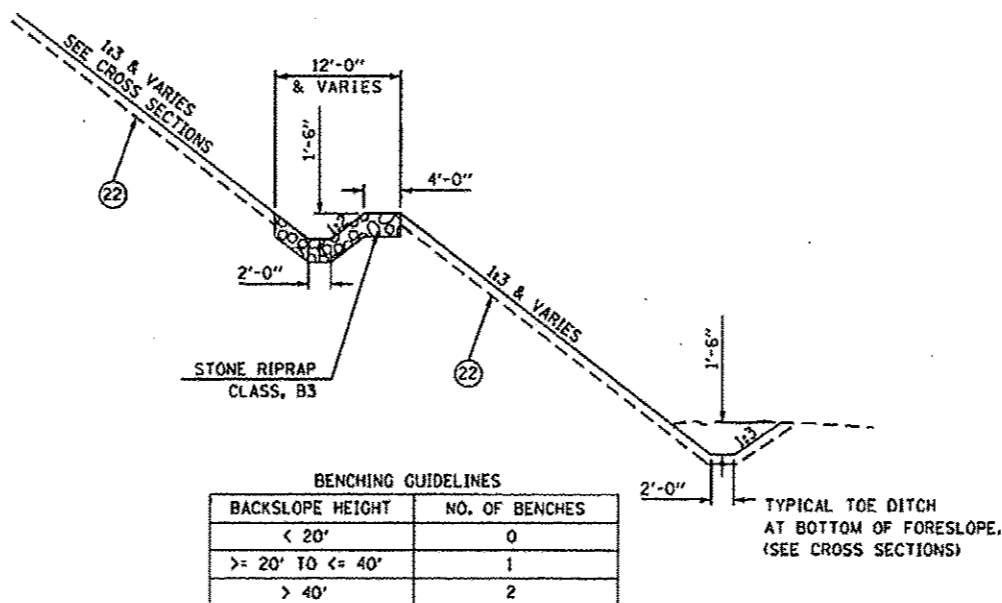


U.S. ROUTE 34 MEDIAN OPENING

REFER TO INTERSECTION DETAILS FOR CROSSOVER SLOPES AND ELEVATIONS.

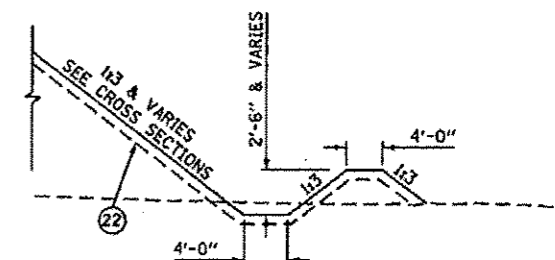


TYPICAL HOT-MIX ASHALT CONSTRUCTION JOINT



TYPICAL BENCH DITCH IN FORESLOPES

STA 742+00.00 TO STA 748+00.00 RT (US 34)



TOE OF SLOPE DITCH BERMS

SEE CROSS SECTIONS FOR EXACT LOCATIONS

REVISIION 1-8-13

FILE NAME * D:\88469-DHT-14-TYP-DETAIL1.dgn	USER NAME * eohh	DESIGNED - OBS	REVISED -	STATE OF ILLINOIS DEPARTMENT OF TRANSPORTATION	TYPICAL SECTIONS DETAILS			F.A.P. RTE. 313	SECTION 7-2 & 6-1	COUNTY HENDERSON	TOTAL SHEETS 976	SHEET NO. 94
	PLOT SCALE * 100.0000 / 1"	DRAWN - PSBA	REVISED -		SCALE: N.A.	SHEET NO. 14 OF 18 SHEETS	STA.	TO STA.	CONTRACT NO. 68409			
	PLOT DATE * 10/18/2012	CHECKED - CSB	REVISED -		ILLINOIS FED. AID PROJECT							
		DATE - 10/2012	REVISED -									

**PROPOSED LEGEND**

- 1 POLYMERIZED HOT-MIX ASPHALT SURFACE COURSE, MIX D, N70 2"
- 2 POLYMERIZED HOT-MIX ASPHALT BINDER COURSE, IL-12.5, N70 2.25"
- 3 HOT-MIX ASPHALT BINDER COURSE, IL-19.0, N70 8"
- \*\* 9A SUB-BASE GRANULAR MATERIAL, TYPE A, 12"
- \*\* 9B LIME MODIFIED SOIL 12"
- 10 EMBANKMENT
- 11 HOT-MIX ASPHALT SHOULDERS 8"
- 12 AGGREGATE SHOULDERS, TYPE B, 8"
- 14 PIPE UNDERDRAIN 4" (SPECIAL) (STD 601201-D4) AT 1% SLOPE
- 15 4" PERFORATED CORRUGATED POLYETHYLENE TUBING @ 0.40% MIN. SLOPE (SEE PROP. UNDERDRAIN PROFILE SHEETS) (PAID FOR AS "PIPE UNDERDRAINS 4")
- 16 CONCRETE HEADWALL FOR PIPE DRAIN (PER STD 601101)
- 22 4" TOPSOIL PLACEMENT
- \* 23 HMA PAVEMENT (FULL DEPTH), 12.25"

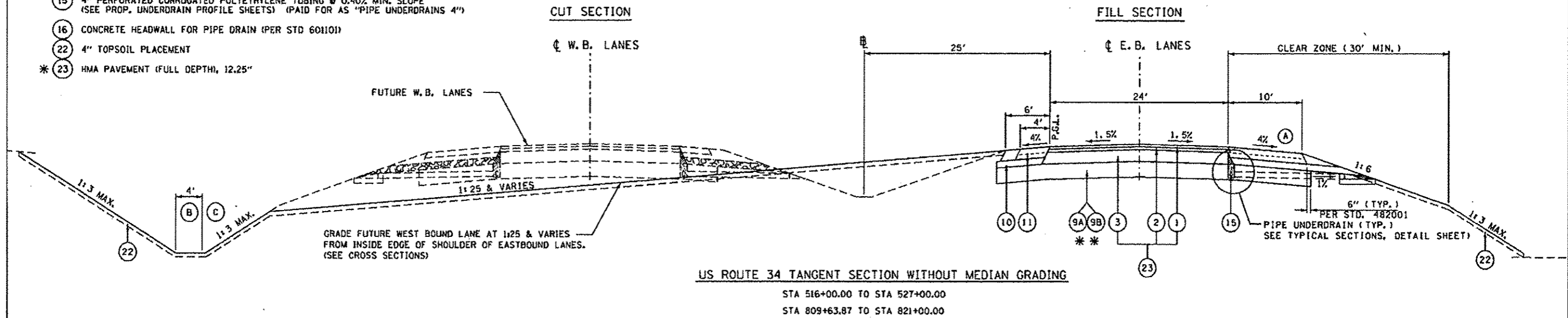
**LEGEND NOTES:**

\* ITEMS 1, 2, & 3 WILL BE PAID FOR AT THE CONTRACT UNIT PRICE PER SQUARE YARD FOR HMA PAVEMENT (FULL-DEPTH), 12.25"

\* SUB-BASE GRANULAR MATERIAL IS REQUIRED AT SELECTED LOCATIONS. SEE SCHEDULE. CONTRACTOR OPTION FOR SUBGRADE IMPROVEMENT METHOD AT ALL OTHER LOCATIONS.

**NOTES:**

- (A) CONSTRUCT HMA AND AGGREGATE SHOULDER UP TO TOP OF HMA BINDER COURSE 8" PRIOR TO PLACING 2.25" BINDER AND 2" SURFACE COURSES.
- (B) STANDARD OUTER DITCH DEPTH IS 5.00 FT. BELOW OUTSIDE EDGE OF PAVEMENT.
- (C) CONTINUE 1:6 FORESLOPE WHEN DITCH DEPTH IS 7.00 FT. OR LESS BELOW OUTSIDE EDGE OF PAVEMENT. USE 1:3 FORESLOPE OUTSIDE CLEAR ZONE (30') WHEN DITCH DEPTH IS GREATER THAN 7.00 FT.



**SPECIAL NOTES: UNSUITABLE AND RESTRICTED USE MATERIAL**

EXPECTED LOCATIONS OF UNSUITABLE AND RESTRICTED USE MATERIALS ARE NOTED ON THE PLAN & PROFILE AND/OR CROSS SECTION SHEETS.

UNSUITABLE MATERIAL SHALL BE REMOVED ENTIRELY, OR TO 3-FT BELOW THE BOTTOM OF THE IMPROVED SUBGRADE (WHICHEVER IS LESS), AND TO A WIDTH OF 2-FT OUTSIDE THE SHOULDER.

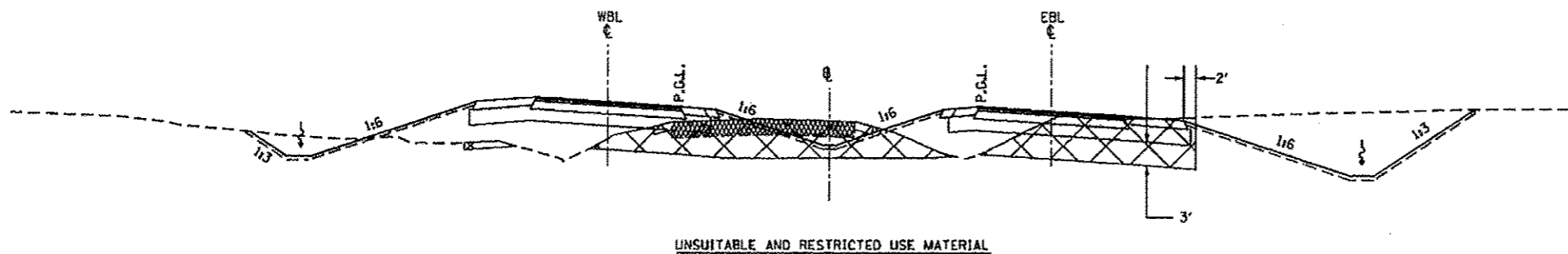
UNSUITABLE SOILS SHALL BE DISPOSED OUTSIDE EMBANKMENT IN ACCORDANCE WITH SECTION 202.03 OF THE STANDARD SPECIFICATIONS.

RESTRICTED USE SOILS SHOULD BE RESTRICTED TO THE INTERIOR OF EMBANKMENTS AND COVERED WITH A MINIMUM OF 3-FT OF UNRESTRICTED SOILS OR BLENDED WITH UNRESTRICTED USE SOILS TO THE SATISFACTION OF THE ENGINEER.

SEE SPECIAL PROVISIONS FOR ADDITIONAL REQUIREMENTS.

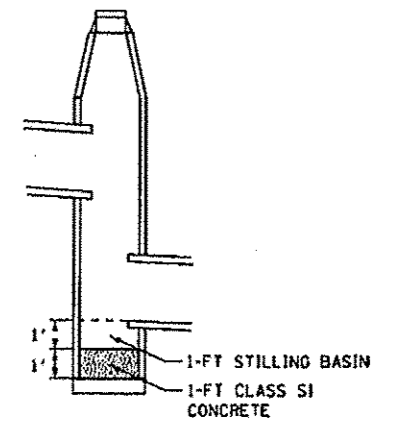
**CROSS SECTION LEGEND**

- UNSUITABLE SOIL
- ROCK FILL FOUNDATION
- PAVEMENT REMOVAL
- RIPRAP
- SAND DRAINAGE BLANKET



**SPECIAL NOTES: DROP MANHOLE**

THE BOTTOM OF ALL DROP MANHOLES SHALL BE FILLED WITH 1-FT CLASS S1 CONCRETE. SEE SCHEDULE OF QUANTITIES FOR LOCATIONS. ALL LABOR AND MATERIAL REQUIRED TO PROVIDE DROP MANHOLE CONNECTIONS SHALL BE INCLUDED IN THE COST OF THE MANHOLE OF THE SIZE AND TYPE SPECIFIED.



REVISION 1-8-13

FILE NAME * 0460489-DHT-19-TYP-DETAIL2.dgn	USER NAME * zsohl	DESIGNED - DBS	REVISED -	STATE OF ILLINOIS DEPARTMENT OF TRANSPORTATION	TYPICAL SECTIONS DETAILS		P.A.P. RTE.	SECTION	COUNTY	TOTAL SHEETS	SHEET NO.
	PLOT SCALE * 1/8"=1'-0"	CHECKED - CSB	REVISED -		SCALE: N.A.	SHEET NO. 15 OF 18 SHEETS	STA.	TO STA.	HENDERSON	975	95
	PLOT DATE * 10/10/2012	DATE - 10/2012	REVISED -						CONTRACT NO. 68409		ILLINOIS FED. AID PROJECT