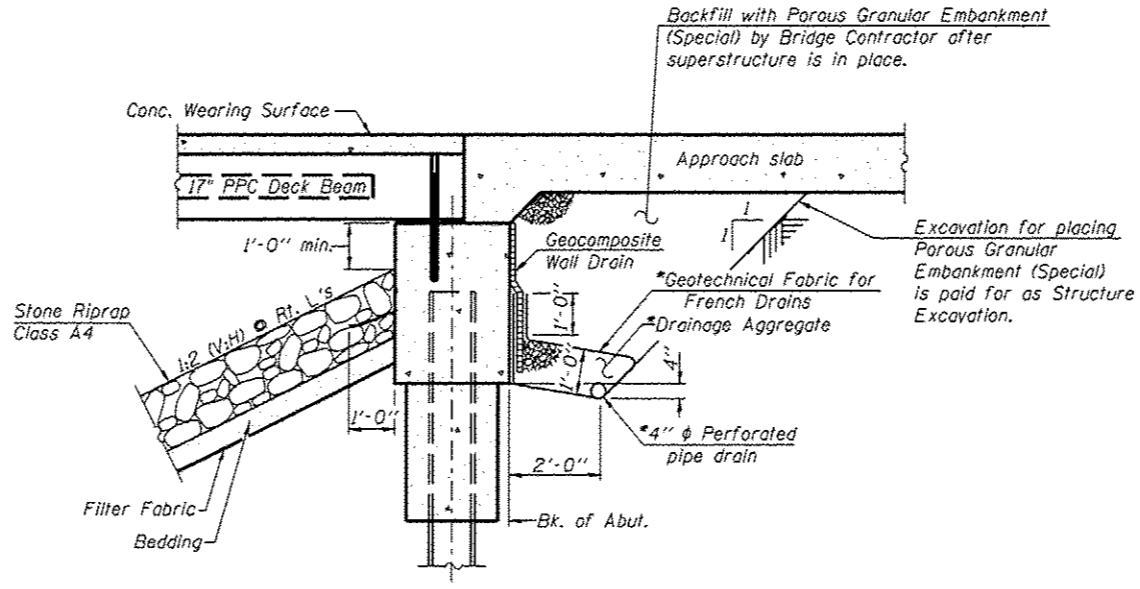


GENERAL NOTES

Reinforcement bars designated (E) shall be epoxy coated.

Layout of slope protection system may be varied to suit ground conditions in the field as directed by the Engineer.

The embankment configuration shown shall be the minimum that must be placed and compacted prior to construction of the abutments.



SECTION THRU ABUTMENT
(Horiz. dim. @ Rt. L's)

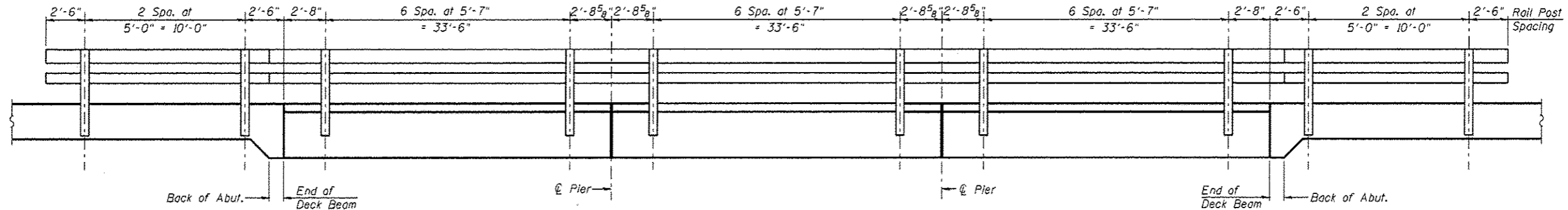
*Included in the cost of Pipe Underdrains for Structures.

Note:

All drainage system components shall extend to 2'-0" from the end of each wingwall except an outlet pipe shall extend until intersecting with the side slopes. The pipes shall drain into concrete headwalls. (See Article 601.05 of the Standard Specifications and Highway Standard 601101).

TOTAL BILL OF MATERIAL

ITEM	UNIT	SUPER	SUB	TOTAL
Stone Riprap, Class A4	Sq. Yd.	-	1009	1009
Filter Fabric	Sq. Yd.	-	1009	1009
Structure Excavation	Cu. Yd.	-	40	40
Cofferdam Excavation	Cu. Yd.	-	72	72
Cofferdam (Type 1) (Location-5)	Each	-	1	1
Cofferdam (Type 1) (Location-6)	Each	-	1	1
Concrete Structures	Cu. Yd.	-	222.2	222.2
Concrete Superstructure	Cu. Yd.	85.7	-	85.7
Bridge Deck Grooving	Sq. Yd.	544	-	544
Concrete Encasement	Cu. Yd.	-	3.5	3.5
Protective Coat	Sq. Yd.	565	-	565
Precast Prestressed Concrete Deck Beams (17" Depth)	Sq. Ft.	3262	-	3262
Reinforcement Bars, Epoxy Coated	Pound	23820	17980	41800
Steel Rolling, Type SM	Foot	294	-	294
Furnishing Steel Piles HP12x53	Foot	-	1237	1237
Driving Piles	Foot	-	1237	1237
Test Pile Steel HP12x53	Each	-	2	2
Pile Shoes	Each	-	22	22
Name Plates	Each	1	-	1
Geocomposite Wall Drain	Sq. Yd.	-	28	28
Porous Granular Embankment, Special	Cu. Yd.	-	47	47
Concrete Wearing Surface, 5"	Sq. Yd.	363	-	363
Pipe Underdrains for Structures 4"	Foot	-	122	122



RAIL POST SPACING

1 REVISED 1-7-13

	USER NAME *	DESIGNED - MTH	REVISED - 11-21-12	STATE OF ILLINOIS DEPARTMENT OF TRANSPORTATION	GENERAL DATA STRUCTURE NO. 011-3362		F.A.P. RTE.	SECTION	COUNTY	TOTAL SHEETS	SHEET NO.
	FILE NAME *	CHECKED - TBP	REVISED -		322	11-13	CHRISTIAN	437	236		
	PLOT SCALE *	DRAWN - AJF	REVISED -		CONTRACT NO. 72961						
	PLOT DATE *	CHECKED - MTH	REVISED -		ILLINOIS FED. AID PROJECT						