

FAP 322 (US 51)

F.A.P. RTE.	SECTION	COUNTY	TOTAL SHEETS	SHEET NO.
322	11-13	CHRISTIAN	437	59
STA.		TO STA.		
FED. ROAD DIST. NO.		ILLINOIS FED. AID PROJECT		

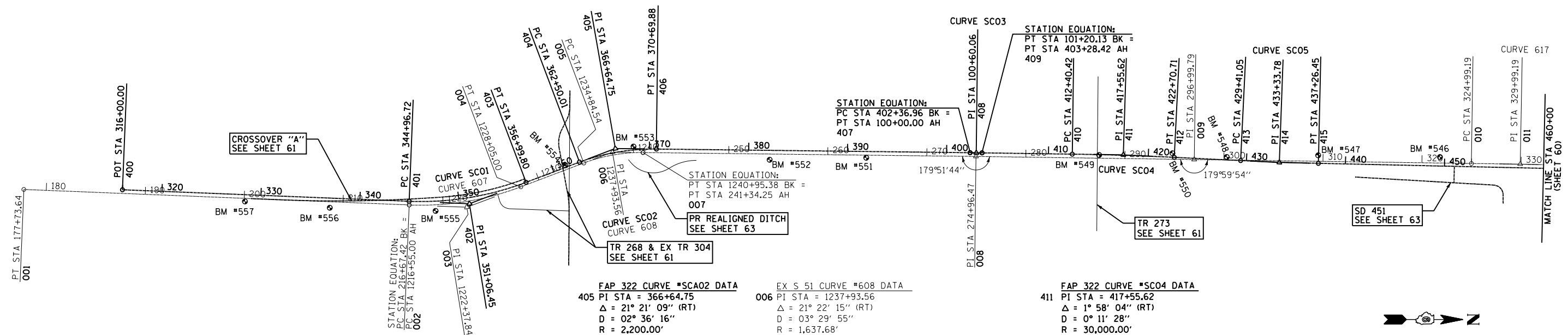
**FAP 322 CURVE #SCA01 DATA**  
 402 PI STA = 351+06.45  
 Δ = 22° 58' 38" (LT)  
 D = 01° 54' 35"  
 R = 3,000.00'  
 T = 609.73'  
 L = 1,203.08'  
 E = 61.34'  
 401 PC STA = 344+96.72  
 403 PT STA = 356+99.80

**EX US 51 CURVE #607 DATA**  
 003 PI STA = 1222+37.84  
 Δ = 22° 59' 44" (LT)  
 D = 01° 59' 59"  
 R = 2,865.34'  
 T = 582.84'  
 L = 1,150.00'  
 E = 58.68'  
 002 PC STA = 1216+55.00  
 004 PT STA = 1228+05.00

**FAP 322 CURVE #SC03 DATA**  
 408 PI STA = 100+60.06  
 Δ = 0° 8' 16" (RT)  
 D = 0° 6' 53"  
 R = 50,000.00'  
 T = 60.07'  
 L = 120.13'  
 E = 0.04'  
 407 PC STA = 100+00.00  
 409 PT STA = 101+20.13

**FAP 322 CURVE #SC05 DATA**  
 414 PI STA = 433+33.78  
 Δ = 1° 30' 00" (LT)  
 D = 0° 11' 28"  
 R = 30,000.00'  
 T = 392.72'  
 L = 785.40'  
 E = 2.57'  
 413 PC STA = 429+41.05  
 415 PT STA = 437+26.45

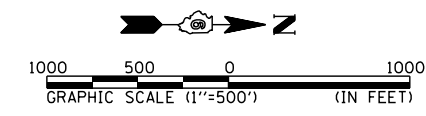
**EX US 51 CURVE #617 DATA**  
 011 PI STA = 329+99.19  
 Δ = 0° 27' 58" (RT)  
 D = 0° 2' 48"  
 R = 122,929.92'  
 T = 500.00'  
 L = 999.99'  
 E = 1.02'  
 010 PC STA = 324+99.19  
 012 PT STA = 334+99.18



**FAP 322 CURVE #SCA02 DATA**  
 405 PI STA = 366+64.75  
 Δ = 21° 21' 09" (RT)  
 D = 02° 36' 16"  
 R = 2,200.00'  
 T = 414.75'  
 L = 819.87'  
 E = 38.75'  
 404 PC STA = 362+50.01  
 406 PT STA = 370+69.88

**EX S 51 CURVE #608 DATA**  
 006 PI STA = 1237+93.56  
 Δ = 21° 22' 15" (RT)  
 D = 03° 29' 55"  
 R = 1,637.68'  
 T = 309.01'  
 L = 610.84'  
 E = 28.90'  
 005 PC STA = 1234+84.54  
 007 PT STA = 1240+95.38

**FAP 322 CURVE #SC04 DATA**  
 411 PI STA = 417+55.62  
 Δ = 1° 58' 04" (RT)  
 D = 0° 11' 28"  
 R = 30,000.00'  
 T = 515.20'  
 L = 1,030.29'  
 E = 4.42'  
 410 PC STA = 412+40.42  
 412 PT STA = 422+70.71



BENCHMARKS		
MARK	ELEVATION	DESCRIPTION
BM #557	655.00	CHSLD " □ " IN CENTER OF NORTH HW - 2.60 MILES NORTH OF JCT IL 16 / US 51 STA 328+41.00, 68.05' RT (PR US 51) STA 200+09.90, 31.05' RT (EX US 51)
BM #556	655.97	RR SPIKE IN PP TAG #33445 - 2.77 MILES NORTH OF JCT IL 16 / US 51 STA 336+98.50, 97.70' RT (PR US 51) STA 208+67.40, 60.70' RT (EX US 51)
BM #555	656.26	RR SPIKE IN PP TAG #33440 - 2.97 MILES NORTH OF JCT IL 16 / US 51 STA 347+59.10, 97.90' RT (PR US 51) STA 1219+18.90, 61.05' RT (EX US 51)
BM #554	653.52	CHSLD " □ " IN WEST END OF SOUTH WW, SN 011-2008 - 3.23 MILES NORTH OF JCT IL 16 / US 51 STA 361+34.55, 19.58' LT (PR US 51) STA 1233+04.20, 43.50' LT (EX US 51)
BM #553	653.00	RR SPIKE IN PP TAG #33394 - 3.36 MILES NORTH OF JCT IL 16 / US 51 STA 368+40.88, 34.67' LT (PR US 51) STA 1240+01.80, 62.40' LT (EX US 51)
BM #552	654.69	CHSLD " □ " ON NORTH SIDE OF CONC DITCH CHECK - 3.62 MILES NORTH OF JCT IL 16 / US 51 STA 382+14.34, 94.45' RT (PR US 51) STA 254+13.80, 57.45' RT (EX US 51)
BM #551	655.37	CHSLD " □ " IN CENTER OF WEST HW - 3.81 MILES NORTH OF JCT IL 16 / US 51 STA 391+88.74, 62.80' RT (PR US 51) STA 263+88.20, 25.80' LT (EX US 51)
BM #549	657.59	CHSLD " □ " ON EAST END OF NORTH HW - 4.25 MILES NORTH OF JCT IL 16 / US 51 STA 415+11.77, 3.47' RT (PR US 51) STA 287+39.80, 32.30' LT (EX US 51)
BM #550	659.24	60d NAIL IN PP - 4.40 MILES NORTH OF JCT IL 16 / US 51 STA 422+50.27, 40.37' LT (PR US 51) STA 294+79.50, 60.35' LT (EX US 51)
BM #548	670.47	CHSLD " □ " IN SOUTH END OF WEST HW -4.50 MILES NORTH OF JCT IL 16 / US 51 STA 427+99.94, 29.52' LT (PR US 51) STA 300+28.50, 30.65' LT (EX US 51)
BM #547	661.44	60d NAIL IN PP TAG #50283 - 4.67 MILES NORTH OF JCT IL 16 / US 51 STA 437+23.37, 80.54' LT (PR US 51) STA 309+51.30, 60.20' LT (EX US 51)
BM #546	666.93	60d NAIL IN PP - 4.91 MILES NORTH OF JCT IL 16 / US 51 STA 449+52.34, 90.40' LT (PR US 51) STA 321+80.30, 60.05' LT (EX US 51)

	CONTROL POINTS		
	POINT	NORTHING	EASTING
EX US 51	001	1,004,658.25	2,613,783.53
	002	1,008,549.82	2,613,914.74
	003	1,009,132.33	2,613,934.39
	004	1,009,676.23	2,613,724.90
	005	1,010,310.36	2,613,480.66
	006	1,010,598.73	2,613,369.60
	007	1,010,907.73	2,613,371.25
	008	1,014,269.90	2,613,389.23
	009	1,016,473.16	2,613,406.30
	010	1,019,272.47	2,613,428.08
	011	1,019,772.45	2,613,431.97

	CONTROL POINTS		
	POINT	NORTHING	EASTING
MAINLINE FAP 322 (US 51)	400	1,005,654.20	2,613,780.09
	401	1,008,549.27	2,613,877.71
	402	1,009,158.66	2,613,898.25
	403	1,009,727.72	2,613,679.29
	404	1,010,241.22	2,613,481.70
	405	1,010,628.30	2,613,332.75
	406	1,011,043.05	2,613,334.97
	407	1,014,210.08	2,613,351.91
	408	1,014,270.14	2,613,352.23
	409	1,014,330.21	2,613,352.69
	410	1,015,242.18	2,613,359.76
	411	1,015,757.36	2,613,363.76
	412	1,016,272.10	2,613,385.44
	413	1,016,941.85	2,613,413.64
	414	1,017,334.22	2,613,430.17
415	1,017,726.89	2,613,436.42	

REVISIONS		
NAME	DATE	

ILLINOIS DEPARTMENT OF TRANSPORTATION  
 ALIGNMENT & BENCHMARK DATA  
 SHEET 1 OF 5  
 FAP 322 (US 51)  
 SECTION 11-13  
 CHRISTIAN COUNTY  
 SCALE: 1"=500'  
 DATE: \_\_\_\_\_ DRAWN BY: SEB  
 CHECKED BY: \_\_\_\_\_

10/5/2012

G:\01Files\010329\SD\TH PLANS NEW\CA00 - Sheets\06\2961-ah-r-alignment\01.dgn