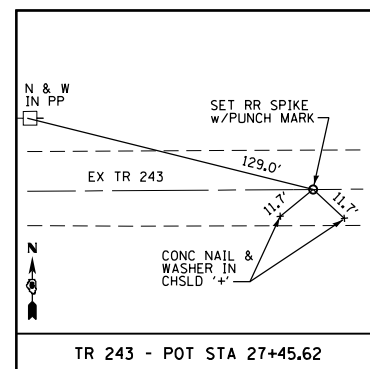
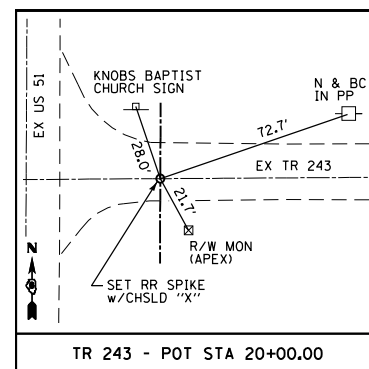
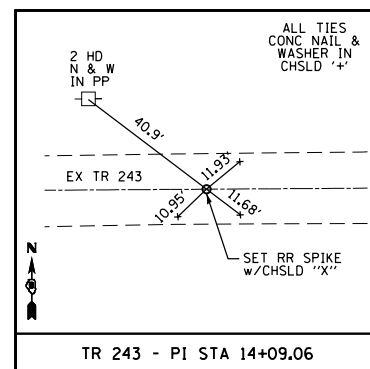
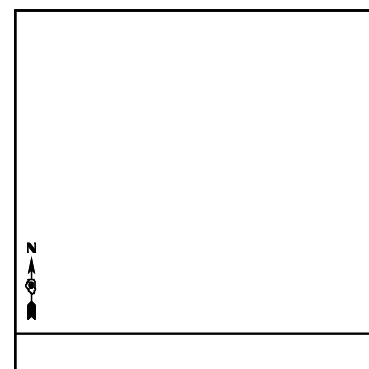
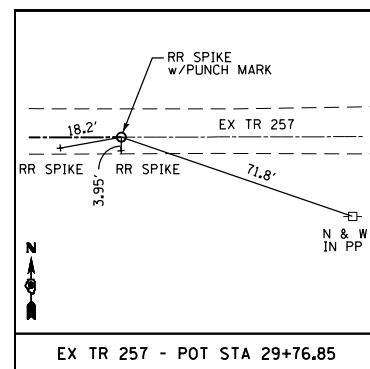
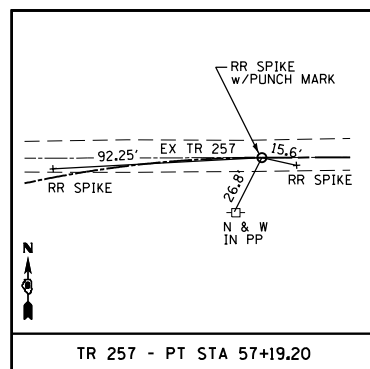
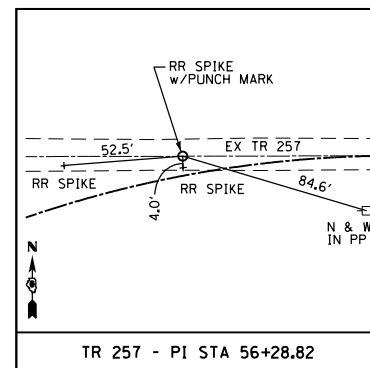
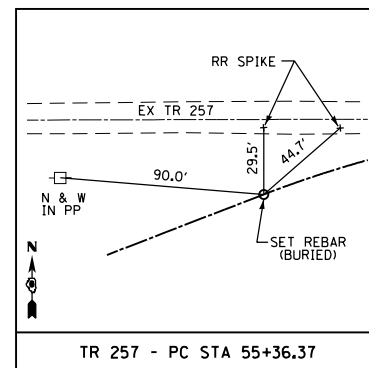
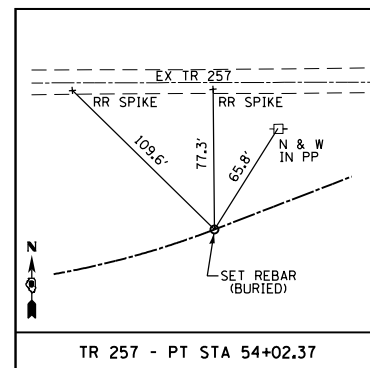
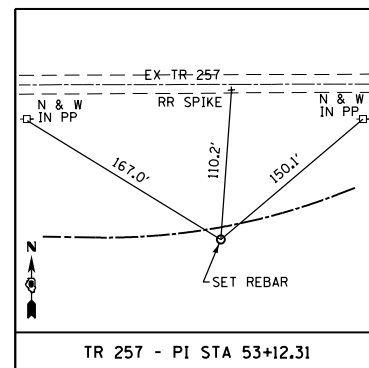
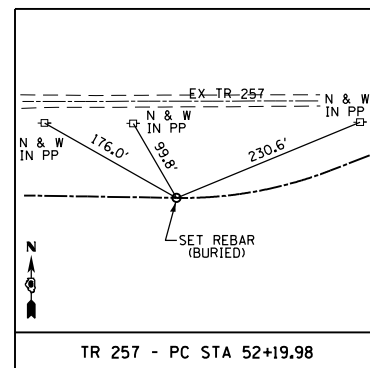
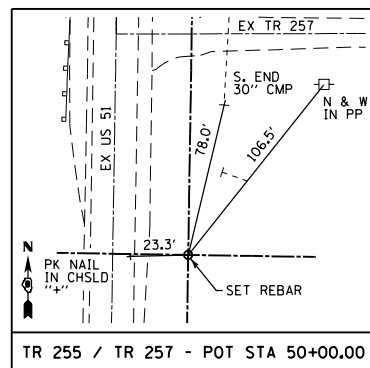


F.A.P. RTE.	SECTION	COUNTY	TOTAL SHEETS	SHEET NO.
322	11-13	CHRISTIAN	437	66
STA.		TO STA.		
FED. ROAD DIST. NO.		ILLINOIS	FED. AID PROJECT	



10/5/2012

G:\01\res\010324\1 SOUTH PLANS NEW\CA00 Sheets\06\2461-shr-Control Ties.dgn

REVISIONS	
NAME	DATE

ILLINOIS DEPARTMENT OF TRANSPORTATION
 HORIZONTAL CONTROL TIES
 FAP 322 (US 51)
 SECTION 11-13
 CHRISTIAN COUNTY
 SCALE: NONE
 DATE
 DRAWN BY
 CHECKED BY