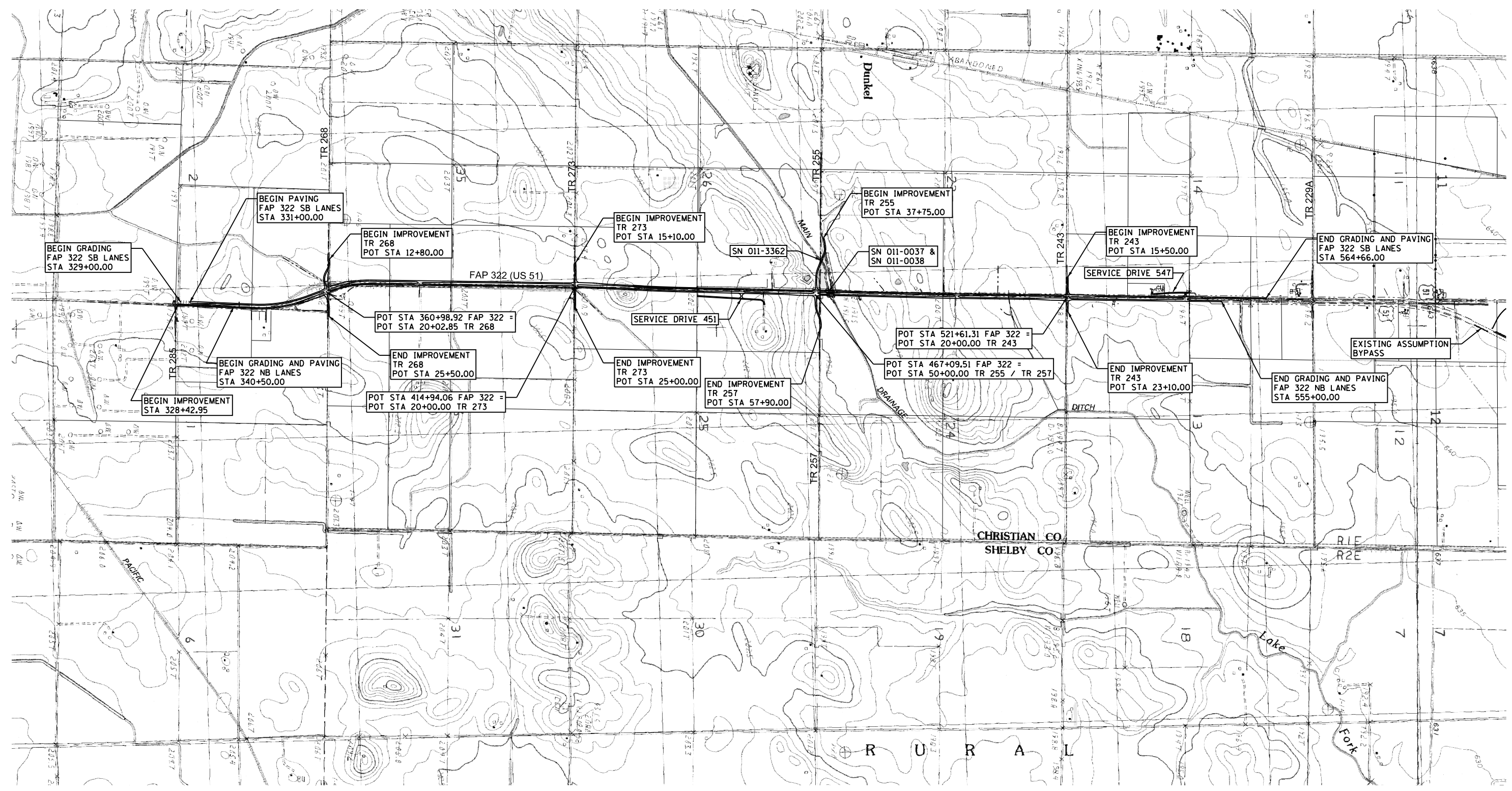
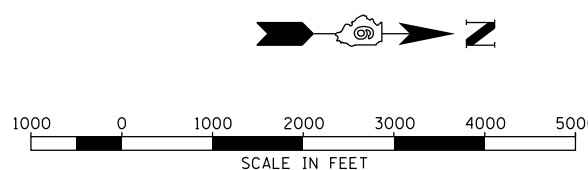


F.A.P. RTE.	SECTION	COUNTY	TOTAL SHEETS	SHEET NO.
322	11-13	CHRISTIAN	437	67
STA.		TO STA.		
FED. ROAD DIST. NO.		ILLINOIS	FED. AID PROJECT	



10/5/2012

D:\01files\010329\1 SOUTH PLANS NEW\CAD Sheets\0672961\ant-site-plan.dgn



REVISIONS	
NAME	DATE

ILLINOIS DEPARTMENT OF TRANSPORTATION

SITE PLAN

FAP 322 (US 51)
SECTION 11-13
CHRISTIAN COUNTY

SCALE: 1"=1000'
DATE: .

DRAWN BY: SEB
CHECKED BY: .