

NE 1/4 SEC 2, T11N, R1E, 3RD PM

PARCEL NO 6069104

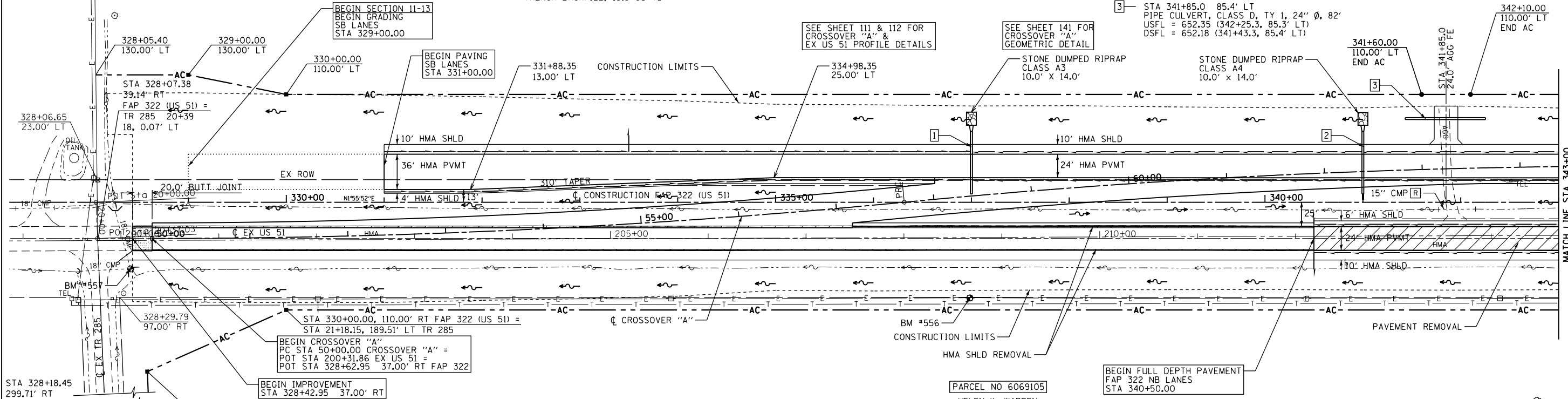
EPLEY FAMILY FARM LIMITED PARTNERSHIP
MARY JANE ERISMAN
DOUGLAS FAMILY LIMITED PARTNERSHIP

- 2- STA 341+00.0 LT INLET BOX, STD 542501, 1 EACH
PIPE CULVERT, CLASS A, TYPE 1, 24" X 64'
USFL = 652.62 DSFL = 652.17
CONCRETE FLARED END SECTION 24", STD 542301, 1 EACH
TRENCH BACKFILL, 11.9 CU YD
- 3- STA 341+85.0 85.4' LT PIPE CULVERT, CLASS A, TY 1, 24" Ø, 82'
USFL = 652.35 (342+25.3, 85.3' LT)
DSFL = 652.18 (341+43.3, 85.4' LT)

F.A.P. RTE.	SECTION	COUNTY	TOTAL SHEETS	SHEET NO.
322	11-13	CHRISTIAN	437	90
STA.		TO STA.		
FED. ROAD DIST. NO.		ILLINOIS FED. AID PROJECT		

DATE	BY

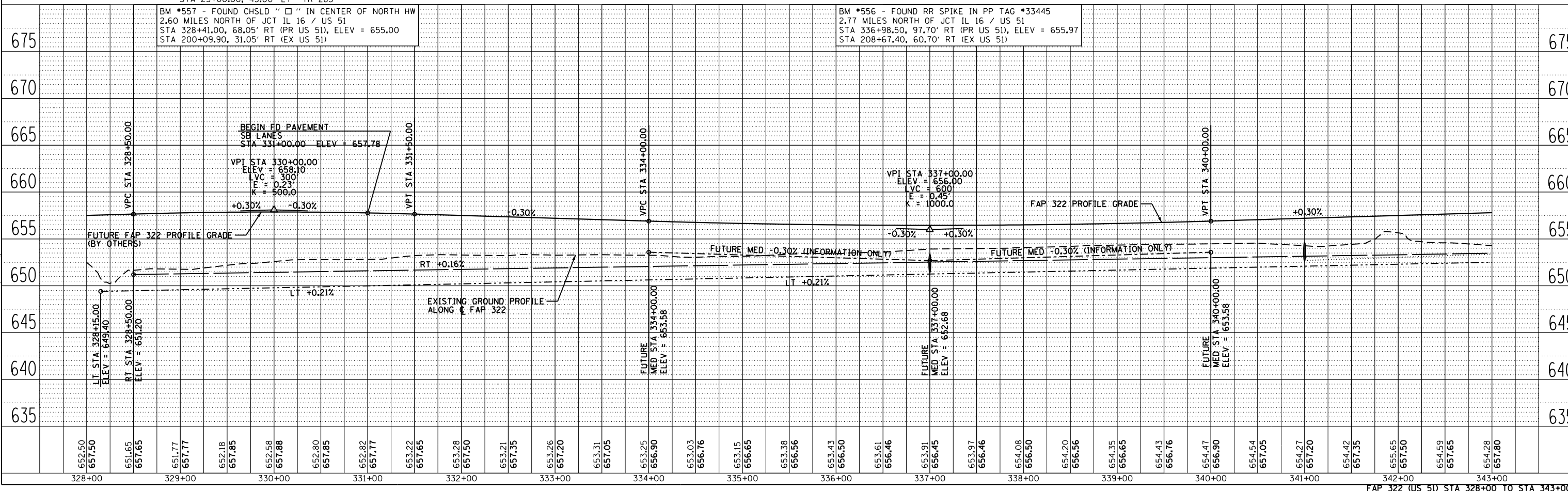
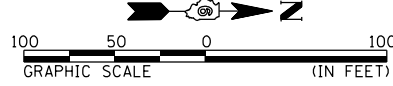
DATE	BY



NW 1/4 SEC 1, T11N, R1E, 3RD PM

PARCEL NO 6069105
HELEN K. WARREN
JOAN W. MCCrackEN
JAN MCCrackEN ALEXANDER

BEGIN FULL DEPTH PAVEMENT
FAP 322 NB LANES
STA 340+50.00



FAP 322 (US 51) STA 328+00 TO STA 343+00

G:\01files\010324\South PLANS NEW\CAD Sheets\05\2961-sh-p1-plan.dwg