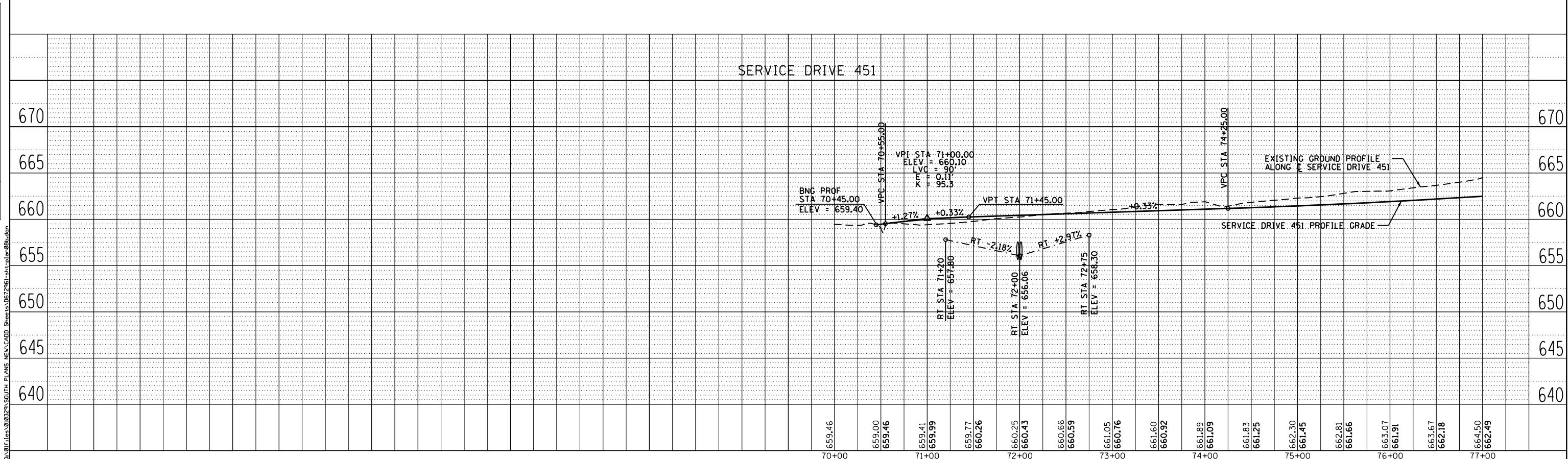
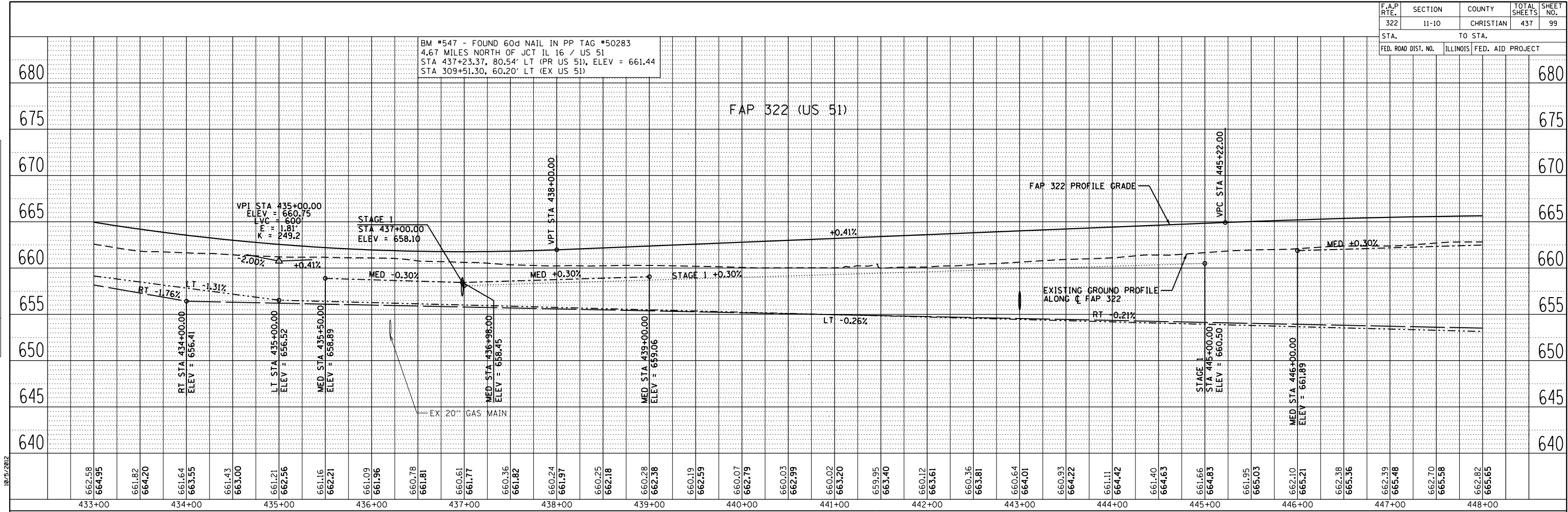


F.A.P. RTE.	SECTION	COUNTY	TOTAL SHEETS	SHEET NO.
322	11-10	CHRISTIAN	437	99
STA. TO STA.		FED. ROAD DIST. NO. ILLINOIS FED. AID PROJECT		

BM #547 - FOUND 60d NAIL IN PP TAG #50283
 4.67 MILES NORTH OF JCT IL 16 / US 51
 STA 437+23.37, 80.54' LT (PR US 51), ELEV = 661.44
 STA 309+51.30, 60.20' LT (EX US 51)

DATE	BY
10/5/2012	
SURVEYED	
ALIGNED	
CHECKED	
DRAWN	
FILE NAME	
NO.	

DATE	BY
10/5/2012	
PROFILE	
GRADES CHECKED	
ELEVATIONS CHECKED	
NOTATIONS CHECKED	
NO.	



D:\Files\010323\South Plans New\1000 Sheets\10672481-ent-plan-10672481.dwg