

SE 1/4 SEC 23, T12N, R1E, 3RD PM

NE 1/4 SEC 23, T12N, R1E, 3RD PM

F.A.P. RTE.	SECTION	COUNTY	TOTAL SHEETS	SHEET NO.
322	11-13	CHRISTIAN	437	104
STA.		TO STA.		
FED. ROAD DIST. NO.		ILLINOIS FED. AID PROJECT		

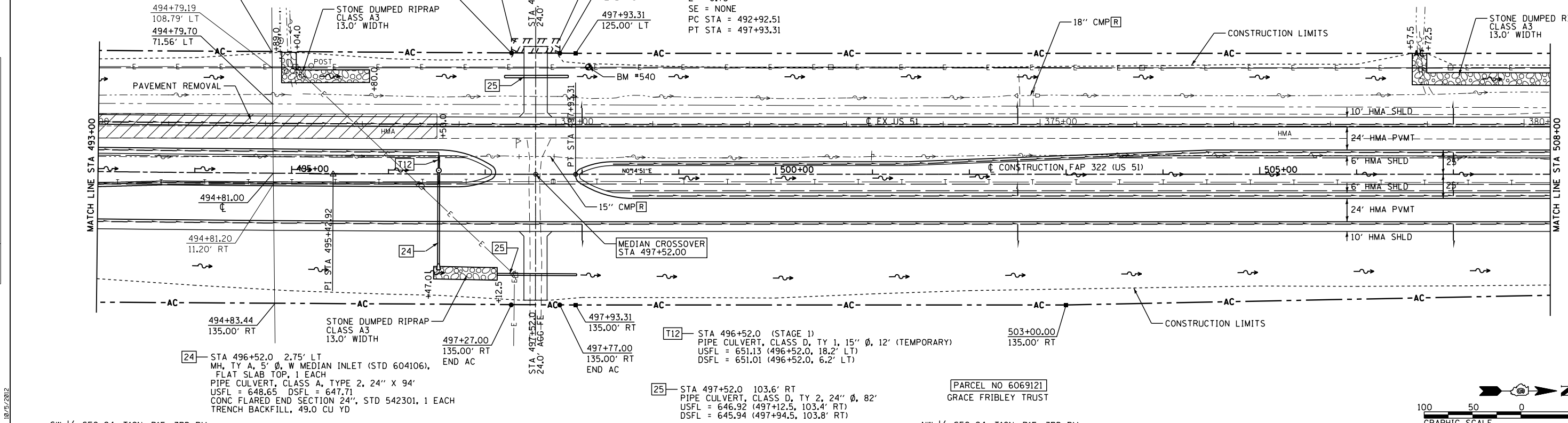
PARCEL NO 6069120  
 CLARADO FAMILY LIMITED PARTNERSHIP, AN ILLINOIS LIMITED PARTNERSHIP

PARCEL NO 6069122  
 MARY LACY

FAP 322 CURVE \*SMI DATA  
 PI STA = 495+42.92  
 $\Delta = 0^\circ 39' 51''$  (LT)  
 $D = 0^\circ 7' 57''$   
 $R = 43,200.00'$   
 $T = 250.40'$   
 $L = 500.80'$   
 $E = 0.73'$   
 $SE = NONE$   
 PC STA = 492+92.51  
 PT STA = 497+93.31

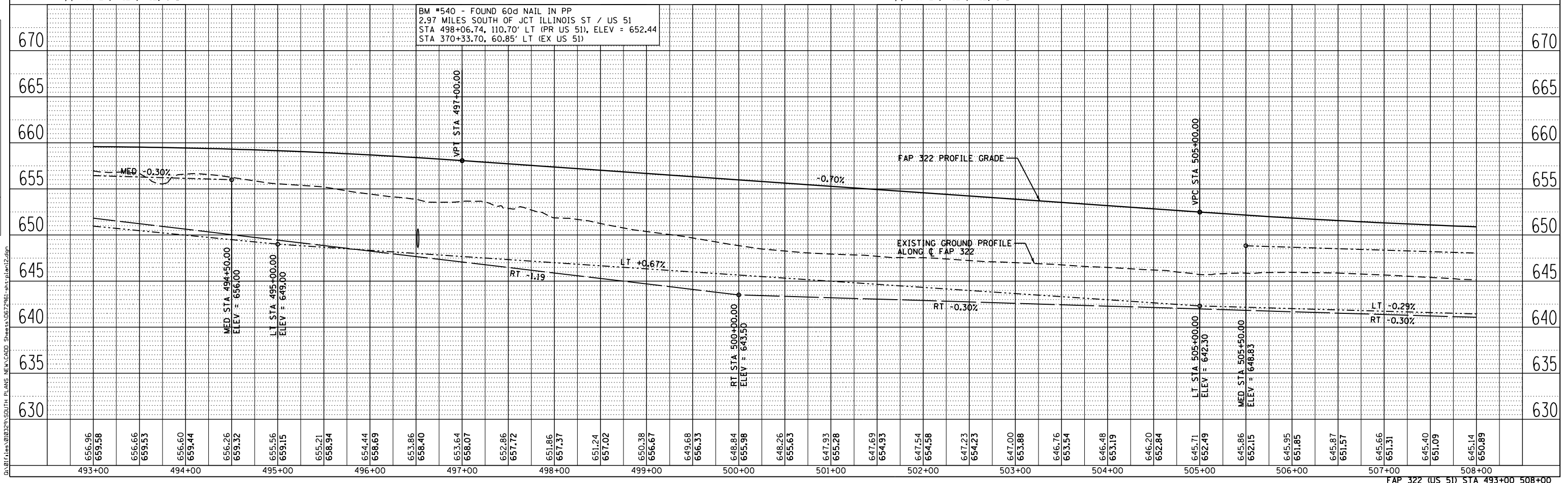
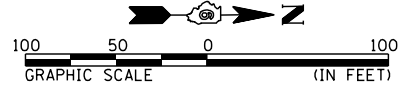
DATE	BY	REVISION

DATE	BY	REVISION



SW 1/4 SEC 24, T12N, R1E, 3RD PM

NW 1/4 SEC 24, T12N, R1E, 3RD PM



G:\01\files\010324\South PLANS NEW\ROAD Sheets\06\2961-sh-1-plan12.dgn  
 10/5/2012