

SE 1/4 SEC 14, T12N, R1E, 3RD PM

NE 1/4 SEC 14, T12N, R1E, 3RD PM

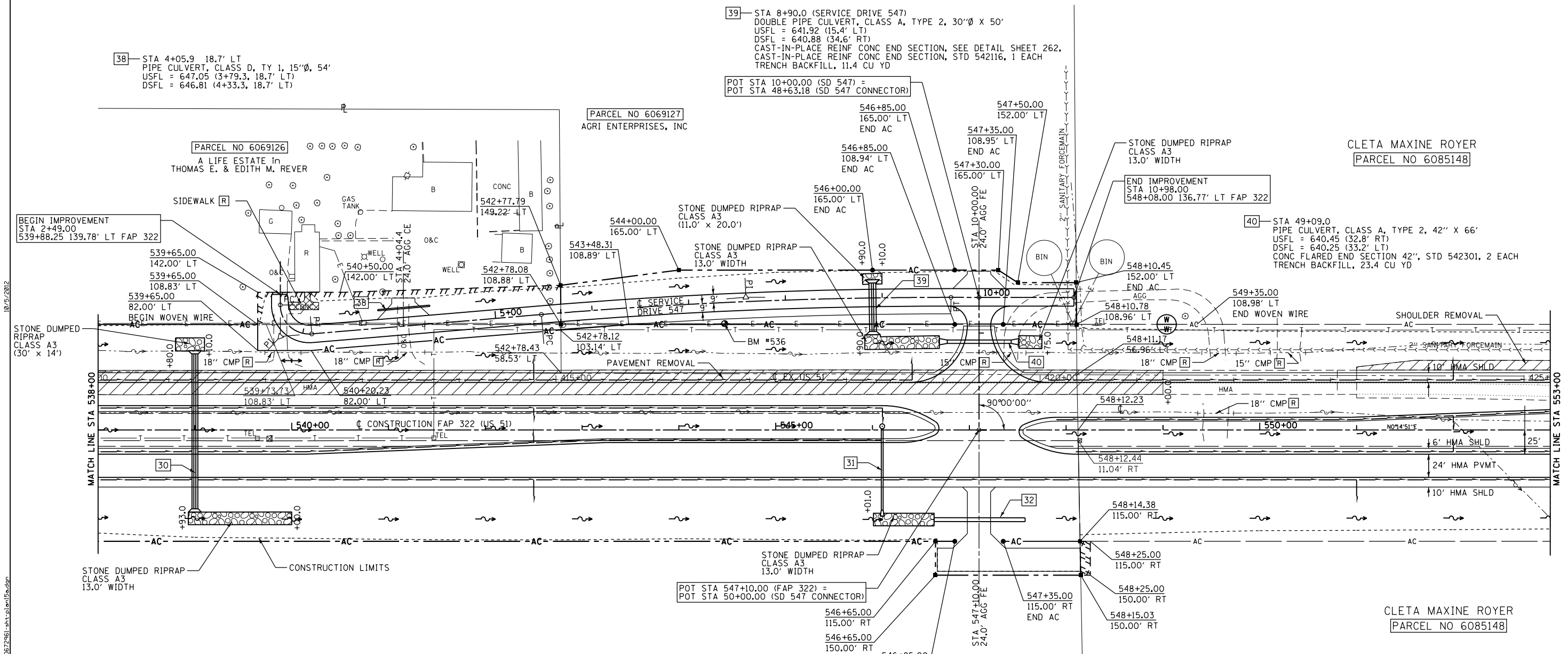
SERVICE DRIVE CURVE #1 DATA

PI STA = 2+92.42 =
 539+88.23 96.36' LT FAP 322
 $\Delta = 94^\circ 51' 13''$ (LT)
 $D = 190^\circ 59' 09''$
 $R = 30.00'$
 $T = 32.66'$
 $L = 49.67'$
 $E = 14.34'$
 $SE = NONE$
 $PC STA = 2+59.77 =$
 539+88.25 129.02' LT FAP 322
 $PT STA = 3+09.43 =$
 540+20.77 99.11' LT FAP 322

SERVICE DRIVE CURVE #2 DATA

PI STA = 7+59.36 =
 544+69.11 136.95' LT FAP 322
 $\Delta = 4^\circ 51' 12''$ (RT)
 $D = 1^\circ 08' 45''$
 $R = 5000.00'$
 $T = 211.89'$
 $L = 423.53'$
 $E = 4.49'$
 $SE = NONE$
 $PC STA = 5+47.47 =$
 542+57.96 119.113' LT FAP 322
 $PT STA = 9+71.00 =$
 546+81.00 136.84' LT FAP 322

F.A.P. RTE.	SECTION	COUNTY	TOTAL SHEETS	SHEET NO.
322	11-13	CHRISTIAN	437	107
STA.		TO STA.		
FED. ROAD DIST. NO.		ILLINOIS FED. AID PROJECT		



38— STA 4+05.9 18.7' LT
 PIPE CULVERT, CLASS D, TY 1, 15"Ø, 54'
 USFL = 647.05 (3+79.3, 18.7' LT)
 DSFL = 646.81 (4+33.3, 18.7' LT)

39— STA 8+90.0 (SERVICE DRIVE 547)
 DOUBLE PIPE CULVERT, CLASS A, TYPE 2, 30"Ø X 50'
 USFL = 641.92 (15.4' LT)
 DSFL = 640.88 (34.6' RT)
 CAST-IN-PLACE REINF CONC END SECTION, SEE DETAIL SHEET 262,
 CAST-IN-PLACE REINF CONC END SECTION, STD 542116, 1 EACH
 TRENCH BACKFILL, 11.4 CU YD

POT STA 10+00.00 (SD 547) =
 POT STA 48+63.18 (SD 547 CONNECTOR)

40— STA 49+09.0
 PIPE CULVERT, CLASS A, TYPE 2, 42" X 66'
 USFL = 640.45 (32.8' RT)
 DSFL = 640.25 (33.2' LT)
 CONC FLARED END SECTION 42", STD 542301, 2 EACH
 TRENCH BACKFILL, 23.4 CU YD

30— STA 539+00.0
 DOUBLE PIPE CULVERT, CLASS A, TYPE 2, 24"Ø X 160'
 USFL = 643.71 (STA 539+00.0 78.5' LT)
 DSFL = 642.84 (STA 539+00.0 81.5' RT)
 CAST-IN-PLACE REINFORCED CONCRETE FLARED END SECTIONS,
 (SEE DETAILS SHEETS 261a-261b)
 TRENCH BACKFILL, 141.6 CU YD
 DRAINAGE AREA = 19 ACRES
 O50 = 37 CFS O100 = 44 CFS

31— STA 546+10.0 3.7' LT
 MH TY A, 5' Ø, W MEDIAN INLET (STD 604106) FLAT SLAB TOP, 1 EACH
 PIPE CULVERT, CLASS A, TYPE 2, 24" X 84'
 USFL = 640.19 DSFL = 639.93
 CONC FLARED END SECTION 24", STD 542301, 1 EACH
 TRENCH BACKFILL, 50.1 CU YD

POT STA 547+10.00 (FAP 322) =
 POT STA 50+00.00 (SD 547 CONNECTOR)

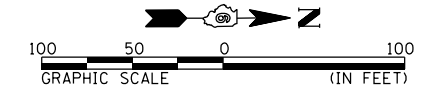
32— STA 547+10.0 92.7' RT
 PIPE CULVERT, CLASS D, TY 1, 48"Ø, 94'
 USFL = 639.78 (546+63.6, 92.6' RT)
 DSFL = 639.56 (547+57.6, 92.7' RT)

BM #536 - FOUND 60d NAIL IN PP
 2.09 MILES SOUTH OF JCT ILLINOIS ST / US 51
 STA 544+47.21, 109.75' LT (PR US 51), ELEV = 648.49
 STA 416+74.20, 60.85' LT (EX US 51)

PARCEL NO 6069125
 LA CHARITE FARMS, INC.
 A NEVADA CORPORATION

CLETA MAXINE ROYER
 PARCEL NO 6085148

CLETA MAXINE ROYER
 PARCEL NO 6085148



REVISIONS	
NAME	DATE

ILLINOIS DEPARTMENT OF TRANSPORTATION
 FAP 322 (US 51)
 SECTION 11-13
 CHRISTIAN COUNTY
 SCALE: DRAWN BY
 DATE: CHECKED BY

Sw 1/4 SEC 13, T12N, R1E, 3RD PM

FAP 322 (US 51) STA 538+00 TO STA 553+00