

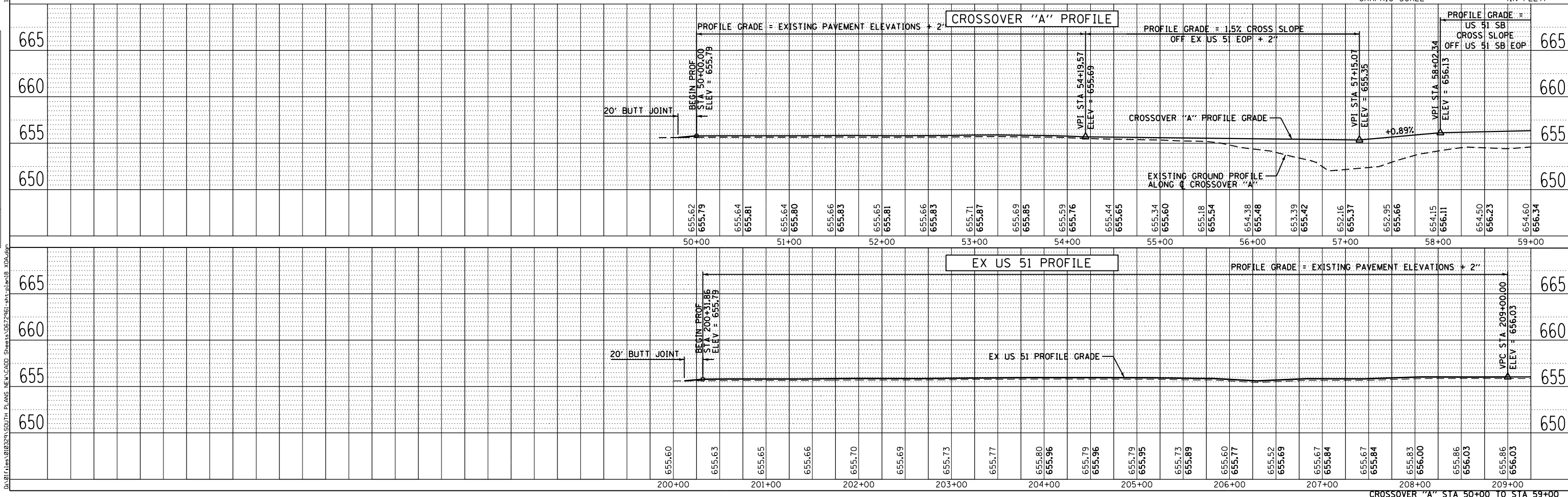
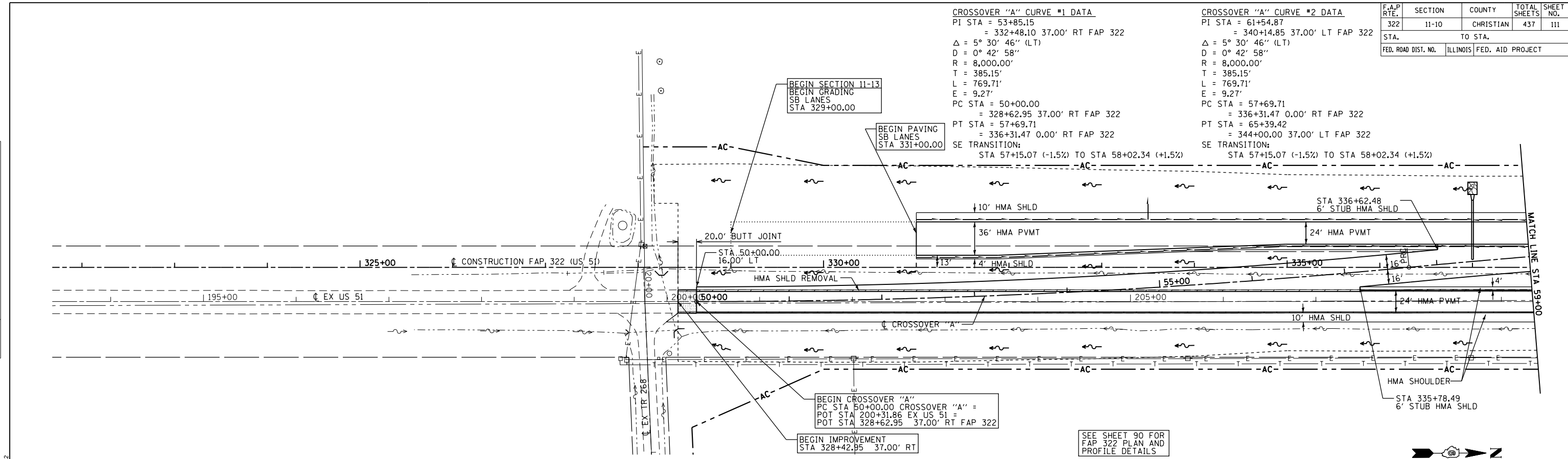
F.A.P. RTE.	SECTION	COUNTY	TOTAL SHEETS	SHEET NO.
322	11-10	CHRISTIAN	437	111
STA.		TO STA.		
FED. ROAD DIST. NO.		ILLINOIS FED. AID PROJECT		

CROSSOVER "A" CURVE #1 DATA
 PI STA = 53+85.15
 = 332+48.10 37.00' RT FAP 322
 $\Delta = 5^\circ 30' 46''$ (LT)
 $D = 0^\circ 42' 58''$
 $R = 8,000.00'$
 $T = 385.15'$
 $L = 769.71'$
 $E = 9.27'$
 PC STA = 50+00.00
 = 328+62.95 37.00' RT FAP 322
 PT STA = 57+69.71
 = 336+31.47 0.00' RT FAP 322
 SE TRANSITION:
 STA 57+15.07 (-1.5%) TO STA 58+02.34 (+1.5%)

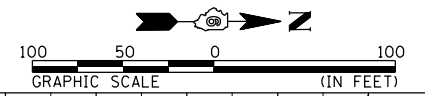
CROSSOVER "A" CURVE #2 DATA
 PI STA = 61+54.87
 = 340+14.85 37.00' LT FAP 322
 $\Delta = 5^\circ 30' 46''$ (LT)
 $D = 0^\circ 42' 58''$
 $R = 8,000.00'$
 $T = 385.15'$
 $L = 769.71'$
 $E = 9.27'$
 PC STA = 57+69.71
 = 336+31.47 0.00' RT FAP 322
 PT STA = 65+39.42
 = 344+00.00 37.00' LT FAP 322
 SE TRANSITION:
 STA 57+15.07 (-1.5%) TO STA 58+02.34 (+1.5%)

PLAN	DATE
BY	
SURVEYED	
ALIGNED	
CHECKED	
NO. OF W.A. CHECKED	
NO.	

PROFILE	DATE
BY	
SURVEYED	
GRADES	
CHECKED	
NO. NOTED	
NO.	



SEE SHEET 90 FOR
 FAP 322 PLAN AND
 PROFILE DETAILS



10/19/2012
 G:\01\10324\10324 SOUTH PLANS NEW\CA00_Sheets\06\2461-sh1-plan11B_X00.dwg