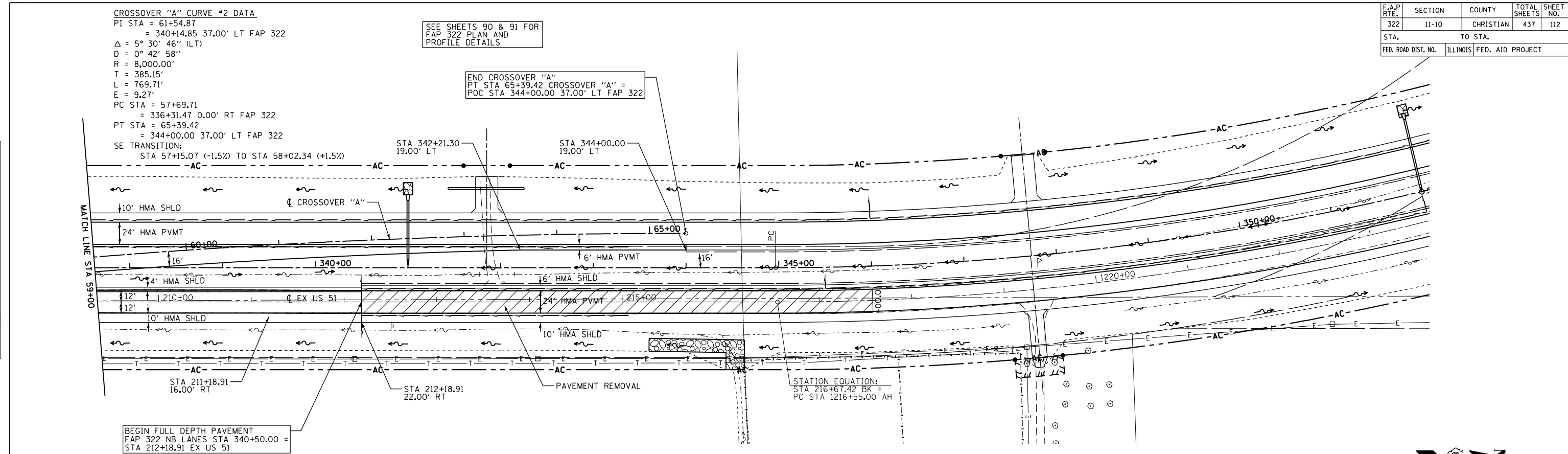


F.A.P. RTE.	SECTION	COUNTY	TOTAL SHEETS	SHEET NO.
322	11-10	CHRISTIAN	437	112
STA.		TO STA.		
FED. ROAD DIST. NO.		ILLINOIS FED. AID PROJECT		

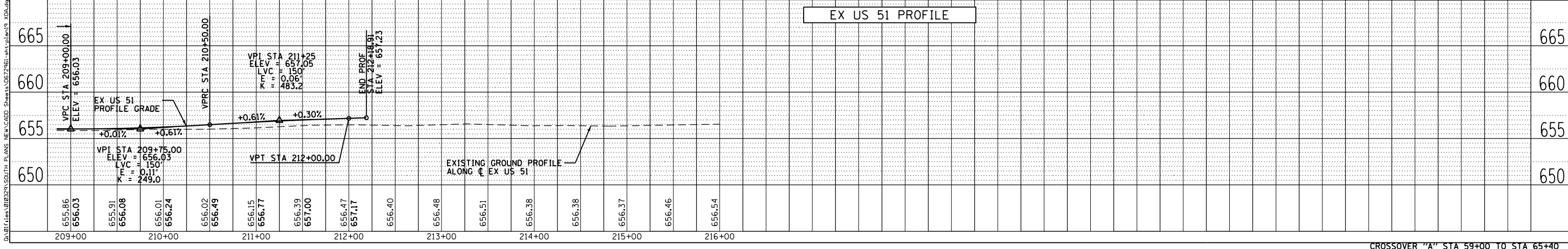
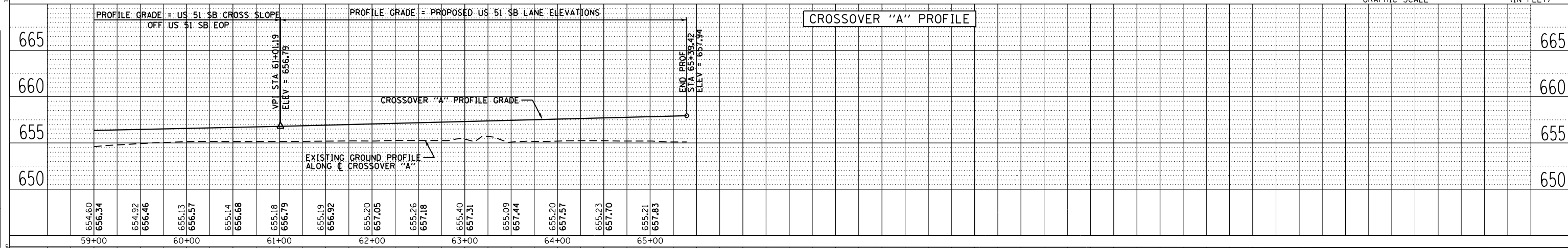
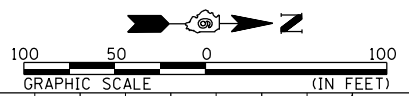
CROSSOVER "A" CURVE #2 DATA
 PI STA = 61+54.87
 = 340+14.85 37.00' LT FAP 322
 $\Delta = 5^\circ 30' 46''$ (LT)
 $D = 0^\circ 42' 58''$
 $R = 8,000.00'$
 $T = 385.15'$
 $L = 769.71'$
 $E = 9.27'$
 PC STA = 57+69.71
 = 336+31.47 0.00' RT FAP 322
 PT STA = 65+39.42
 = 344+00.00 37.00' LT FAP 322
 SE TRANSITION:
 STA 57+15.07 (-1.5%) TO STA 58+02.34 (+1.5%)

SEE SHEETS 90 & 91 FOR
 FAP 322 PLAN AND
 PROFILE DETAILS

END CROSSOVER "A"
 PT STA 65+39.42 CROSSOVER "A" =
 POC STA 344+00.00 37.00' LT FAP 322



BEGIN FULL DEPTH PAVEMENT
 FAP 322 NB LANES STA 340+50.00 =
 STA 212+18.91 EX US 51



DATE	
BY	
PLAN	
NO.	

DATE	
BY	
PROFILE	
NO.	

10/19/2012
 G:\01files\010324\01 SOUTH PLANS NEW\CAD Sheets\06\2481-ah-1-plan19_X0.dwg