

F.A.P. RTE.	SECTION	COUNTY	TOTAL SHEETS	SHEET NO.
322	11-13	CHRISTIAN	437	115
STA.		TO STA.		
FED. ROAD DIST. NO.	ILLINOIS	FED. AID PROJECT		

SE 1/4 SEC 23, T12N, R1E, 3RD PM

SW 1/4 SEC 24, T12N, R1E, 3RD PM

PARCEL NO 6069120
 CLARADO FAMILY LIMITED PARTNERSHIP, AN ILLINOIS LIMITED PARTNERSHIP

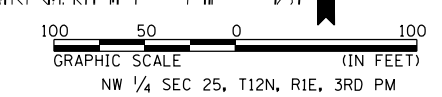
TR 255 CURVE 907-P DATA
 PI STA = 45+62.70
 $\Delta = 21^\circ 00' 00''$ (LT)
 $D = 8^\circ 48' 53''$
 $R = 650.00'$
 $T = 120.47'$
 $L = 238.24'$
 $E = 11.07'$
 $SE = 3.3\%$
 PC STA = 44+42.23
 PT STA = 46+80.47
 SE ATTAINED STA 43+75 TO STA 44+62
 (TR STA 43+75 TO STA 44+02)
 SE REMOVED STA 46+60 TO STA 47+47
 (TR STA 47+20 TO STA 47+47)

PARCEL NO 6069118
 GOLDMINE FARMS, INC
 A DELAWARE CORPORATION

TR 255 CURVE 908-P DATA
 PI STA = 40+29.27
 $\Delta = 33^\circ 47' 56''$ (RT)
 $D = 16^\circ 22' 13''$
 $R = 350.00'$
 $T = 106.33'$
 $L = 206.47'$
 $E = 15.80'$
 $SE = 3.9\%$
 PC STA = 39+22.94
 PT STA = 41+29.40
 SE ATTAINED STA 38+49 TO STA 39+47
 (TR STA 38+49 TO STA 38+76)
 SE REMOVED STA 41+05 TO STA 42+03
 (TR STA 41+76 TO STA 42+03)

BEGIN CONSTRUCTION
 STA 37+75.00 PR TR 255 =
 STA 18+15.83 EX TR 255

46 STA 48+67.0
 PIPE CULVERT, CLASS A, TY 2, 54" ϕ , 86'
 USFL = 635.38 (37.2' RT)
 DSFL = 634.63 (48.8' LT)
 CONC FLARED END SECTION 54" ϕ , 2 EACH
 TRENCH BACKFILL, 49.3 CU YD



REVISIONS	
NAME	DATE

ILLINOIS DEPARTMENT OF TRANSPORTATION
 PLAN SHEET
 FAP 322 (US 51)
 SECTION 11-13
 CHRISTIAN COUNTY
 SCALE: _____ DRAWN BY _____
 DATE _____ CHECKED BY _____
 TR 255 PLAN STA 37+00 TO STA 50+00

NE 1/4 SEC 26, T12N, R1E, 3RD PM

10/5/2012

D:\01\files\010321\1 SOUTH PLANS NEW\CAD - Sheets\06\2\061-sh-tr-plan22a-tr255.dgn