

SE 1/4 SEC 23, T12N, R1E, 3RD PM

SW 1/4 SEC 24, T12N, R1E, 3RD PM

F.A.P. RTE.	SECTION	COUNTY	TOTAL SHEETS	SHEET NO.
322	11-13	CHRISTIAN	437	117
STA.		TO STA.		
FED. ROAD DIST. NO.		ILLINOIS FED. AID PROJECT		

DATE	BY	PLAN

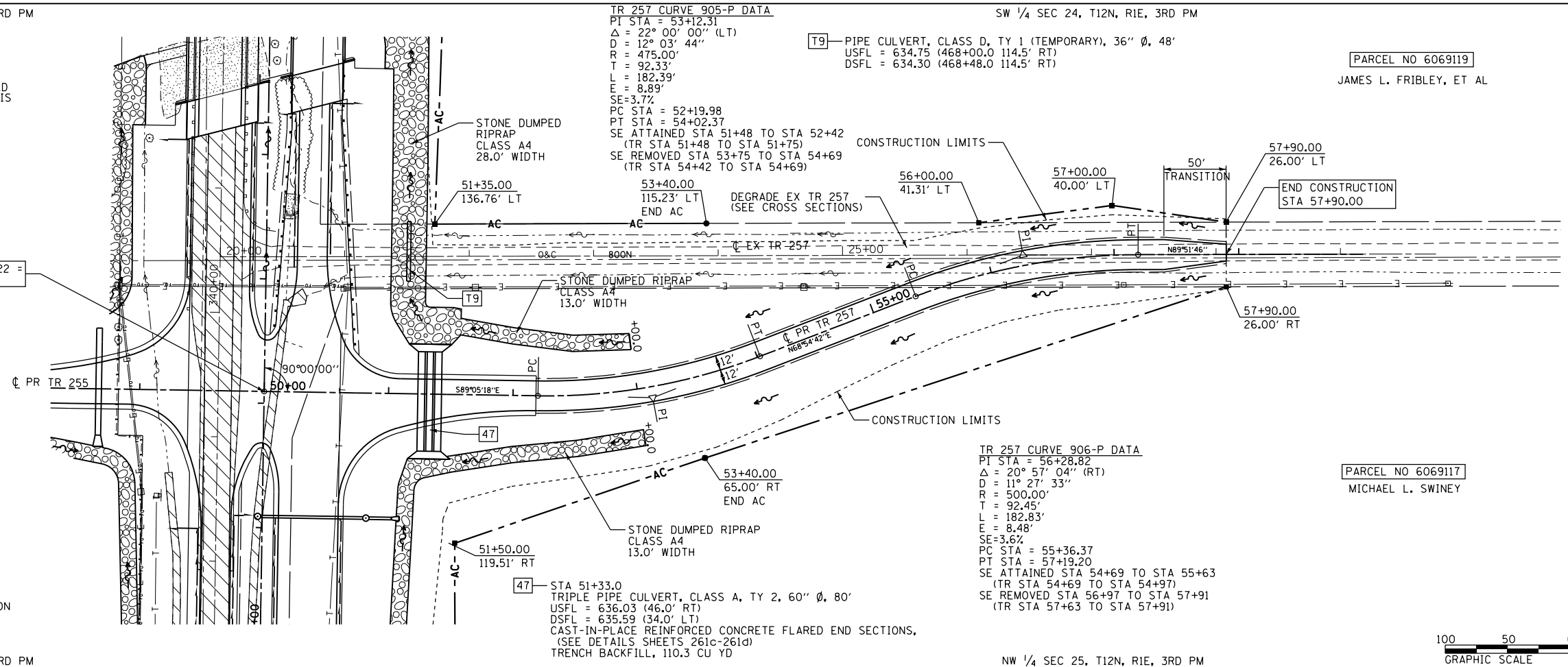
DATE	BY	PROFILE

PARCEL NO 6069120  
CLARADO FAMILY LIMITED PARTNERSHIP, AN ILLINOIS LIMITED PARTNERSHIP

PARCEL NO 6069119  
JAMES L. FRIBLEY, ET AL

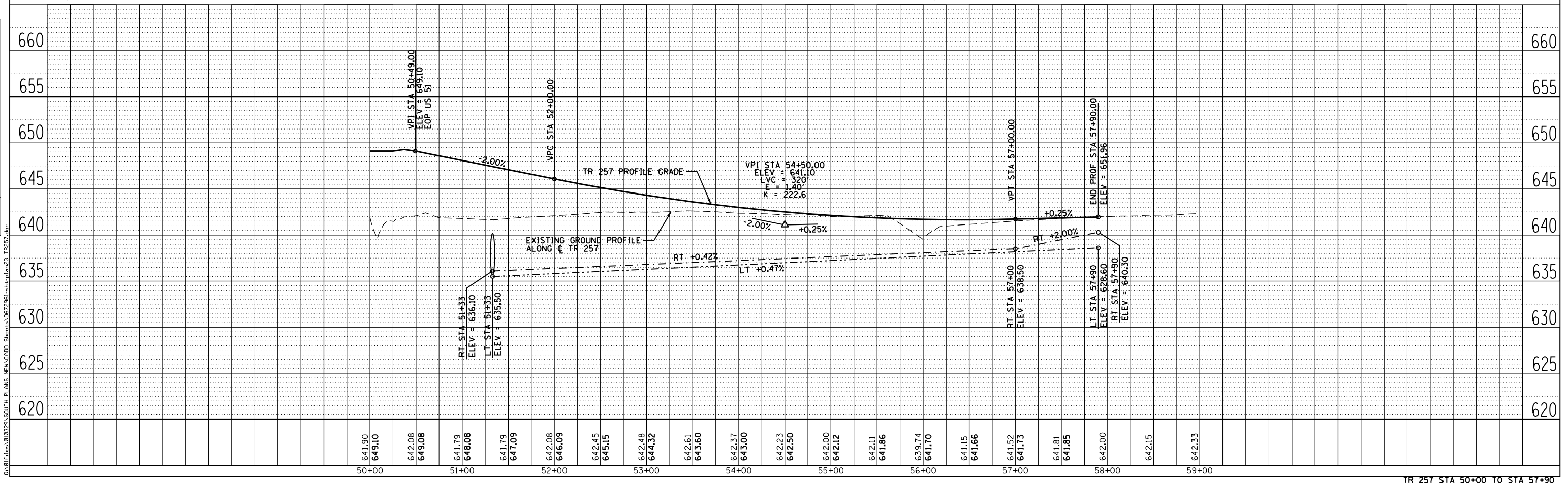
PARCEL NO 6069118  
GOLDMINE FARMS, INC. A DELAWARE CORPORATION

PARCEL NO 6069117  
MICHAEL L. SWINEY



NE 1/4 SEC 26, T12N, R1E, 3RD PM

NW 1/4 SEC 25, T12N, R1E, 3RD PM



TR 257 STA 50+00 TO STA 57+90

D:\01files\010324\0324 SOUTH PLANS NEW\CAD\ Sheets\05\2481-sh-tr-plan23 TR257.dgn 10/5/2012