

STATE OF ILLINOIS
DEPARTMENT OF TRANSPORTATION

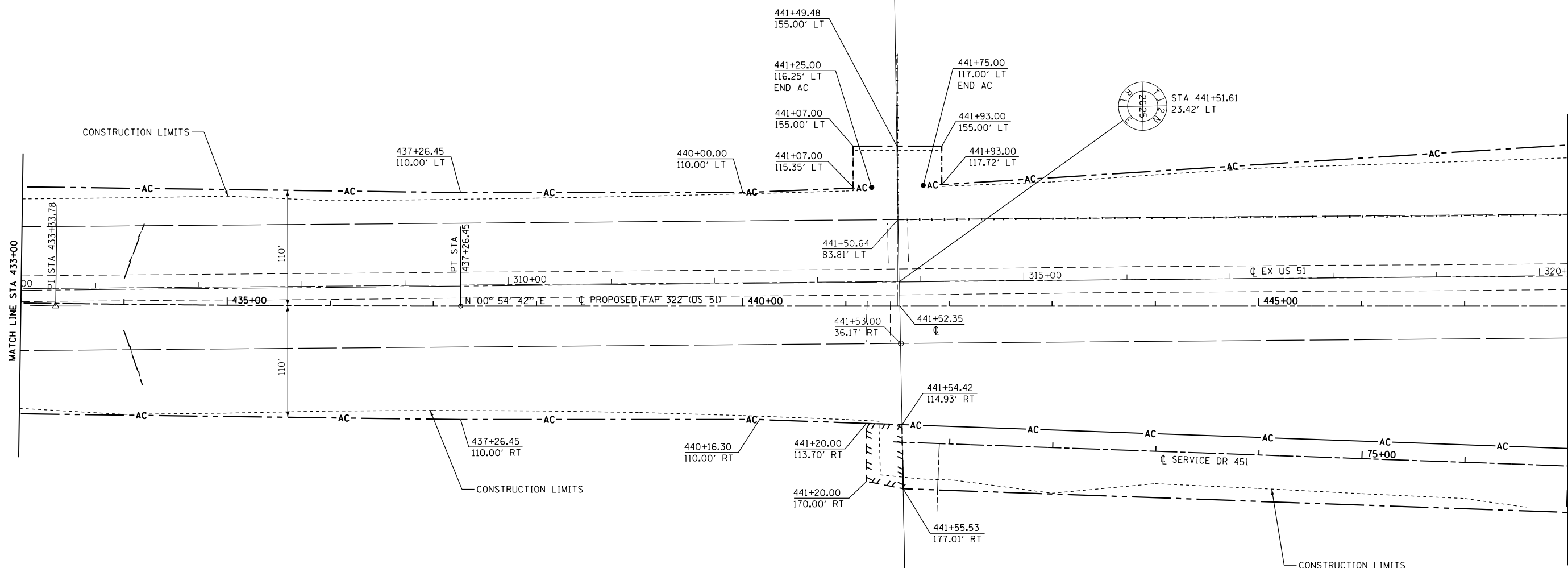
F.A.P. RTE.	SECTION	COUNTY	TOTAL SHEETS	SHEET NO.
322	11-1	CHRISTIAN	437	126
STA.		TO STA.		
FED. ROAD DIST. NO.		ILLINOIS	FED. AID PROJECT	

SE 1/4 SEC 26, T12N, R1E, 3RD PM

NE 1/4 SEC 26, T12N, R1E, 3RD PM

PARCEL NO 6069116
FIRST NATIONAL BANK OF PANA
SEE TABULATIONS ON SHEET 7

PARCEL NO 6069118 & TE
GOLDMINE FARMS, INC.
A DELAWARE CORPORATION
SEE TABULATIONS ON SHEET 9



FAP 322 CURVE #SC05 DATA
 PI STA = 433+33.78
 $\Delta = 1^\circ 30' 00''$ (LT)
 $D = 0^\circ 11' 28''$
 $R = 30,000.00'$
 $T = 392.72'$
 $L = 785.40'$
 $E = 2.57'$
 $SE = NONE$
 PC STA = 429+41.05
 PT STA = 437+26.45

PARCEL NO 6069115
JAMES L. OVERHOLT
SEE TABULATIONS ON SHEET 7

PARCEL NO 6069117
MICHAEL L. SWINEY
SEE TABULATION ON SHEET 9

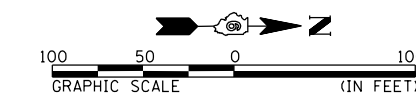
SW 1/4 SEC 25, T12N, R1E, 3RD PM

NW 1/4 SEC 25, T12N, R1E, 3RD PM

NOTES:
 BEARINGS ARE BASED ON THE ILLINOIS STATE PLANE
 COORDINATE SYSTEM, NAD83 1986 - WEST ZONE
 SURVEYED IN ENGLISH.
 PLAT DISTANCES AND STATIONING ARE IN GRID ENGLISH.
 TO CONVERT TO GROUND DIVIDE BY GRID FACTOR.
 GRID FACTOR = 1.00003150

RIGHT OF WAY PLANS

ROUTE F.A.P. 322 (US 51)
 SECTION 11-1
 PROJECT
 COUNTY CHRISTIAN
 JOB NO. R-96-008-95
 STA 433+00 TO STA 448+00
 SCALE 1 = 50'



4/4/10 PM

10/5/2012

G:\01\11es\010325\1 SOUTH NEW VADD Sheets\06\2\961-ant-R1E\11-086.dgn