

STATE OF ILLINOIS
DEPARTMENT OF TRANSPORTATION

F.A.P. RTE.	SECTION	COUNTY	TOTAL SHEETS	SHEET NO.
322	11-1	CHRISTIAN	437	128
STA. 463+00		TO STA. 478+00		
FED. ROAD DIST. NO.		ILLINOIS FED. AID PROJECT		

NE 1/4 SEC 26, T12N, R1E, 3RD PM

PARCEL NO 6069118 & TE
GOLDMINE FARMS, INC
A DELAWARE CORPORATION
SEE TABULATIONS ON SHEET 9

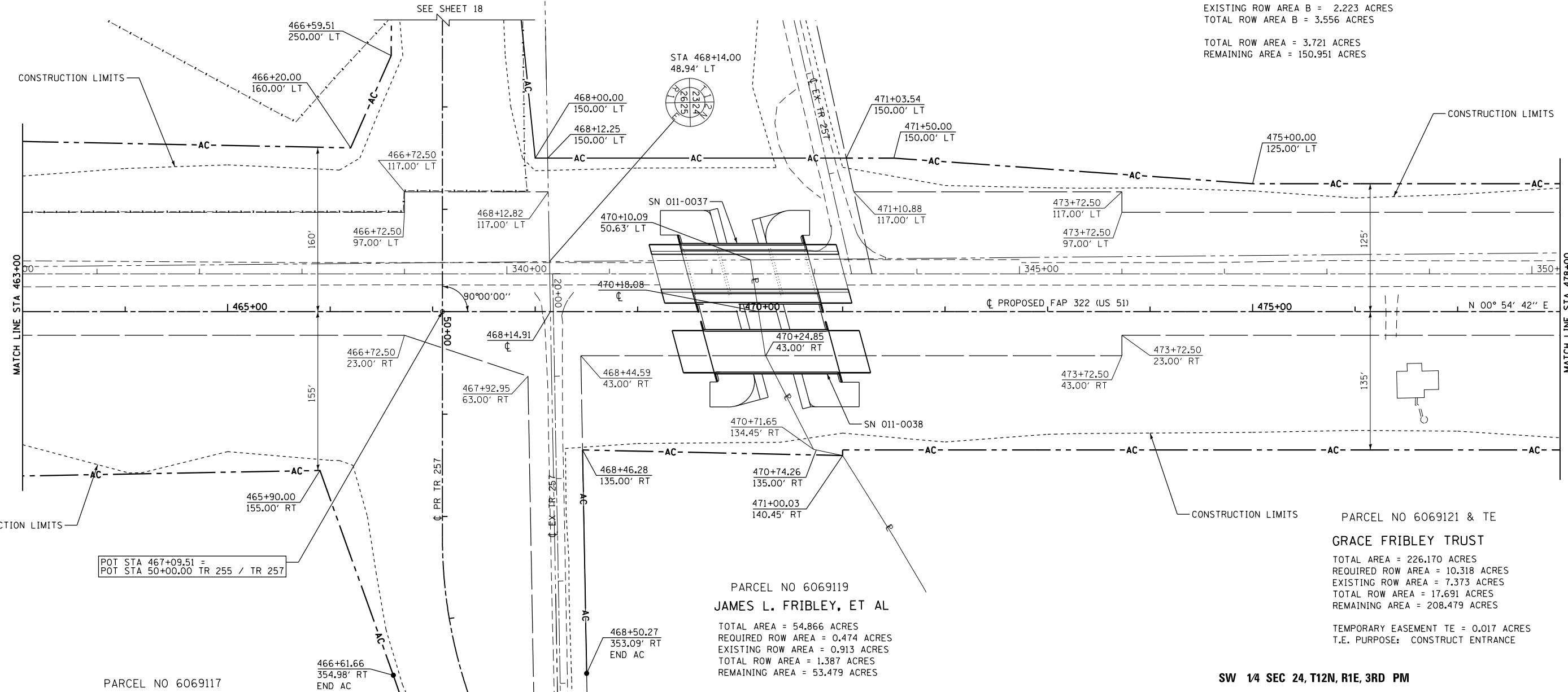
SE 1/4 SEC 23, T12N, R1E, 3RD PM

PARCEL NO 6069120 A & B
CLARADO FAMILY LIMITED
PARTNERSHIP, AN ILLINOIS
LIMITED PARTNERSHIP

TOTAL AREA = 154.672 ACRES
REQUIRED ROW AREA A = 0.165 ACRES
EXISTING ROW AREA A = 0.000 ACRES
TOTAL ROW AREA A = 0.165 ACRES

REQUIRED ROW AREA B = 1.333 ACRES
EXISTING ROW AREA B = 2.223 ACRES
TOTAL ROW AREA B = 3.556 ACRES

TOTAL ROW AREA = 3.721 ACRES
REMAINING AREA = 150.951 ACRES



MATCH LINE STA 463+00

MATCH LINE STA 478+00

POT STA 467+09.51 =
POT STA 50+00.00 TR 255 / TR 257

PARCEL NO 6069117
MICHAEL L. SWINEY
SEE TABULATIONS ON SHEET 9

PARCEL NO 6069119
JAMES L. FRIBLEY, ET AL

TOTAL AREA = 54.866 ACRES
REQUIRED ROW AREA = 0.474 ACRES
EXISTING ROW AREA = 0.913 ACRES
TOTAL ROW AREA = 1.387 ACRES
REMAINING AREA = 53.479 ACRES

PARCEL NO 6069121 & TE

GRACE FRIBLEY TRUST

TOTAL AREA = 226.170 ACRES
REQUIRED ROW AREA = 10.318 ACRES
EXISTING ROW AREA = 7.373 ACRES
TOTAL ROW AREA = 17.691 ACRES
REMAINING AREA = 208.479 ACRES

TEMPORARY EASEMENT TE = 0.017 ACRES
T.E. PURPOSE: CONSTRUCT ENTRANCE

SW 1/4 SEC 24, T12N, R1E, 3RD PM

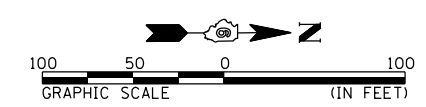
NW 1/4 SEC 25, T12N, R1E, 3RD PM

RIGHT OF WAY PLANS

ROUTE F.A.P. 322 (US 51)
SECTION 11-1
PROJECT
COUNTY CHRISTIAN
JOB NO. R-96-008-95
STA 463+00 TO STA 478+00
SCALE 1" = 50'

NOTES:
BEARINGS ARE BASED ON THE ILLINOIS STATE PLANE
COORDINATE SYSTEM, NAD83 1986 - WEST ZONE
SURVEYED IN ENGLISH.

PLAT DISTANCES AND STATIONING ARE IN GRID ENGLISH.
TO CONVERT TO GROUND DIVIDE BY GRID FACTOR.
GRID FACTOR = 1.00003150



4/4/4/3 PM
10/5/2012
G:\01\1es\010329\1 SOUTH PLANS NEW\CA00 - Sheets\06\2\961-sh1-R01.plt,ann,0.dgn