

STATE OF ILLINOIS
DEPARTMENT OF TRANSPORTATION

F.A.P. RTE.	SECTION	COUNTY	TOTAL SHEETS	SHEET NO.
322	11-1	CHRISTIAN	437	138
STA.		TO STA.		
FED. ROAD DIST. NO.		ILLINOIS FED. AID PROJECT		

SE 1/4 SEC 23, T12N, R1E, 3RD PM

PARCEL NO 6069120 A & B
CLARADO FAMILY LIMITED PARTNERSHIP, AN ILLINOIS LIMITED PARTNERSHIP
SEE TABS ON SHEET 10

TR 255 CURVE #2 DATA
 PI STA = 45+62.70
 $\Delta = 21^\circ 00' 00''$ (LT)
 $D = 8^\circ 48' 53''$
 $R = 650.00'$
 $T = 120.47'$
 $L = 238.24'$
 $E = 11.07'$
 $SE = 3.3\%$
 PC STA = 44+42.23
 PT STA = 46+80.47

SW 1/4 SEC 24, T12N, R1E, 3RD PM

PARCEL NO 6069121
GRACE P. FRIBLEY
SEE TABS ON SHEET 10

PARCEL NO 6069119
JAMES L. FRIBLEY, ET AL
SEE TABS ON SHEET 10

PARCEL NO 6069117 & TE
MICHAEL L. SWINEY
SEE TABS ON SHEET 9

NW 1/4 SEC 25, T12N, R1E, 3RD PM

RIGHT OF WAY PLANS

ROUTE F.A.P. 322 (US 51)
 SECTION 11-1
 PROJECT
 COUNTY CHRISTIAN
 JOB NO. R-96-008-95
 STA 36+62.98 TO STA 50+00 (TR 255)
 SCALE 1" = 50'

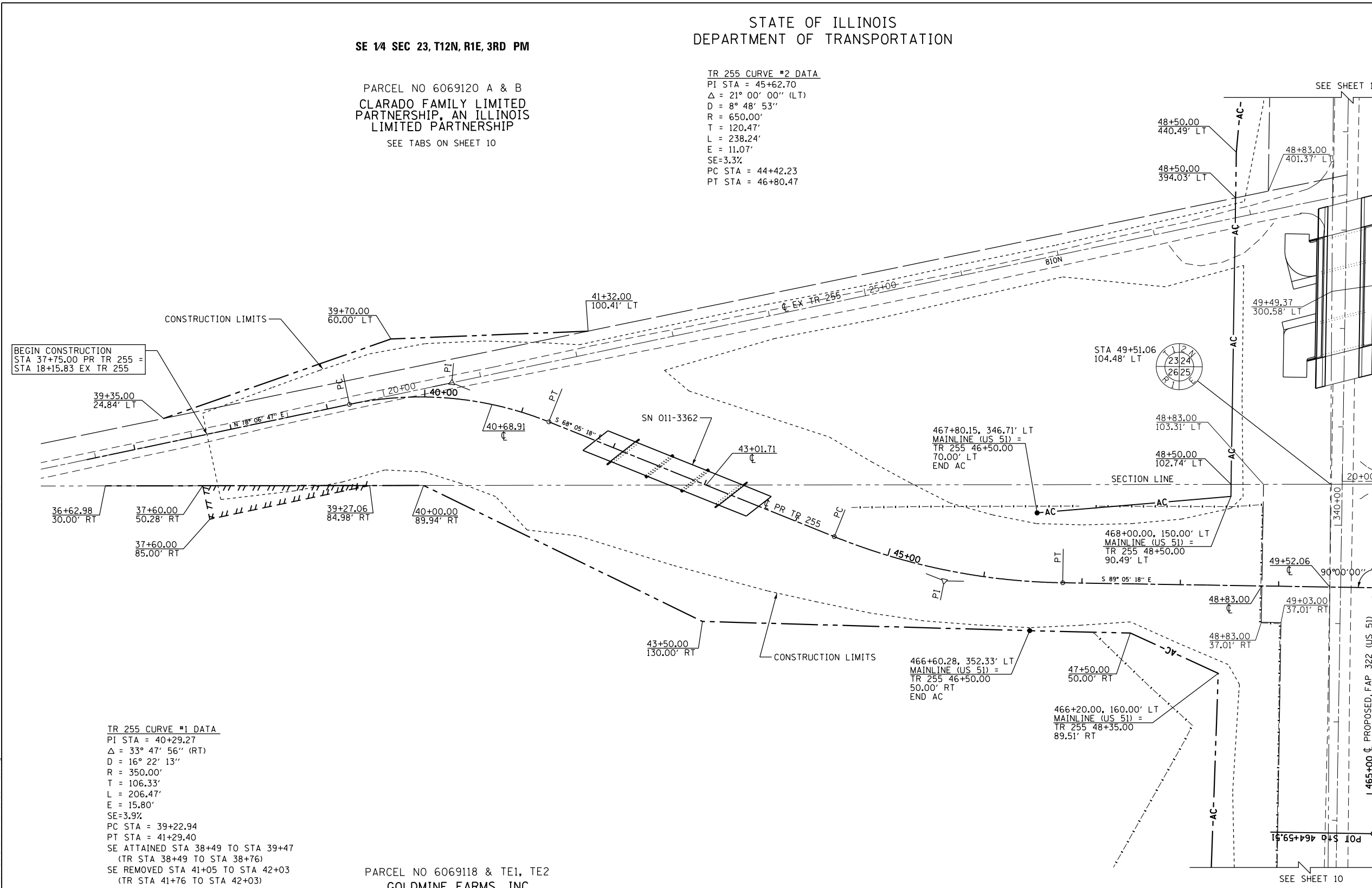
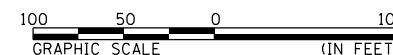
SHEET NO. 20 OF 22

PARCEL NO 6069118 & TE1, TE2
GOLDMINE FARMS, INC
A DELAWARE CORPORATION
SEE TABS ON SHEET 9

NE 1/4 SEC 26, T12N, R1E, 3RD PM

NOTES:
 BEARINGS ARE BASED ON THE ILLINOIS STATE PLANE COORDINATE SYSTEM, NAD83 1986 - WEST ZONE SURVEYED IN ENGLISH.

PLAT DISTANCES AND STATIONING ARE IN GRID ENGLISH. TO CONVERT TO GROUND DIVIDE BY GRID FACTOR. GRID FACTOR = 1.00003150



BEGIN CONSTRUCTION
STA 37+75.00 PR TR 255 =
STA 18+15.83 EX TR 255

4/4/2014 PM

10/5/2012

D:\01\Files\010325\1 SOUTH PLANS\NEW\CA00_Sheets\06\2\01_south\RoadPlan\20_TR255.dgn