

STATE OF ILLINOIS
DEPARTMENT OF TRANSPORTATION

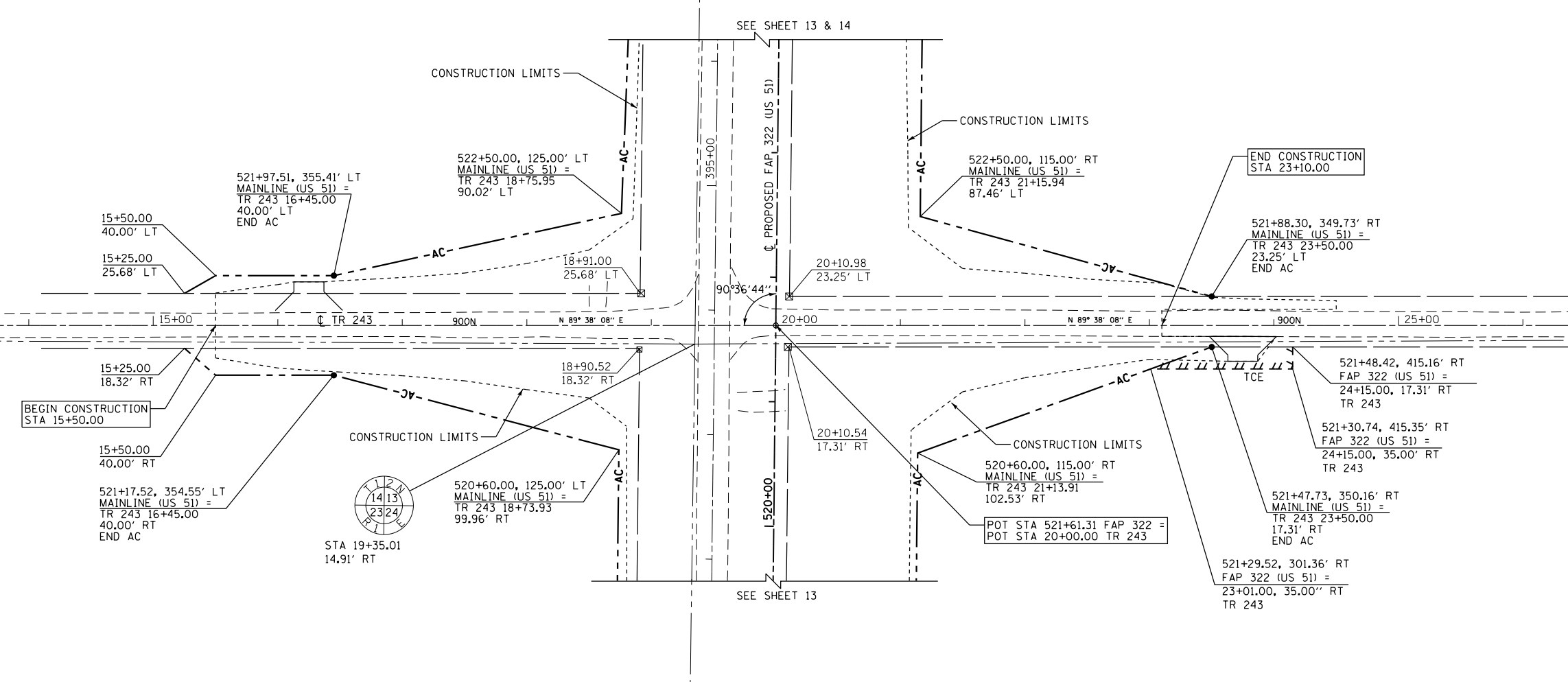
F.A.P. RTE.	SECTION	COUNTY	TOTAL SHEETS	SHEET NO.
322	11-1	CHRISTIAN	437	140
STA.		TO STA.		
FED. ROAD DIST. NO.		ILLINOIS	FED. AID PROJECT	

SE 1/4 SEC 14, T12N, R1E, 3RD PM

PARCEL NO 6069124
JAMES F. & DONNA S. HOWSE
SEE TABULATIONS ON SHEET 14

SW 1/4 SEC 13, T12N, R1E, 3RD PM

PARCEL NO 6069125 & TE
LA CHARITE FARMS, INC.
A NEVADA CORPORATION
SEE TABULATIONS ON SHEET 14



PARCEL NO 6069122 & TE
MARY LACY
SEE TABULATIONS ON SHEET 12

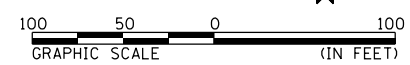
NE 1/4 SEC 23, T12N, R1E, 3RD PM

PARCEL NO 6069123 & TE
JAMES L. FRIBLEY, ET AL
SEE TABULATIONS ON SHEET 13

NW 1/4 SEC 24, T12N, R1E, 3RD PM

NOTES:
BEARINGS ARE BASED ON THE ILLINOIS STATE PLANE
COORDINATE SYSTEM, NAD83 1986 - WEST ZONE
SURVEYED IN ENGLISH.

PLAT DISTANCES AND STATIONING ARE IN GRID ENGLISH.
TO CONVERT TO GROUND DIVIDE BY GRID FACTOR.
GRID FACTOR = 1.00003150



RIGHT OF WAY PLANS	
ROUTE	F.A.P. 322 (US 51)
SECTION	11-1
PROJECT	
COUNTY	CHRISTIAN
JOB NO.	R-96-008-95
STA	15+25 TO STA 23+50 (TR 243)
SCALE	1" = 50'
SHEET NO. 22 OF 22	

4:45:08 PM 10/5/2012 D:\01\1es\010329\1 SOUTH PLANS NEW\CA00 Sheets\0672961-sh1-rd\p1.en22_TR243.dgn