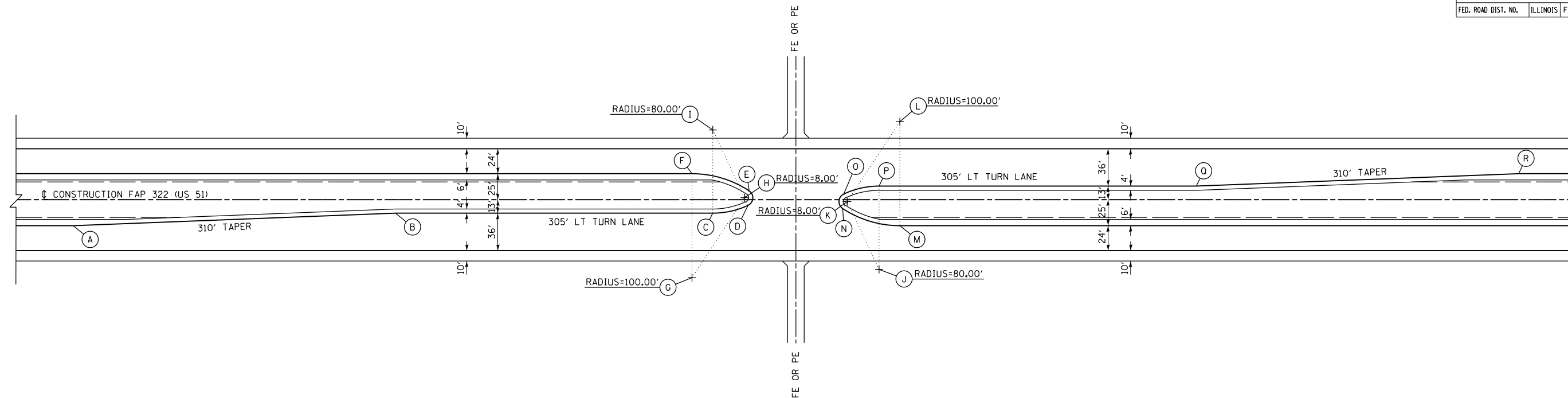
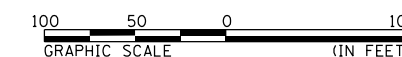


F.A.P. RTE.	SECTION	COUNTY	TOTAL SHEETS	SHEET NO.
322	11-13	CHRISTIAN	437	149
STA.		TO STA.		
FED. ROAD DIST. NO.	ILLINOIS	FED. AID PROJECT		



POINT	STA 381+65.0		
	STATION	OFFSET	ELEVATION
A	374+70.00	25.00 RT	658.96
B	377+80.00	13.00 RT	659.10
C	380+85.00	13.00 RT	660.00
D	381+19.01	5.41 RT	660.08
E	381+20.01	8.51 LT	660.13
F	380+65.00	25.00 LT	660.19
G	380+65.00	75.00 RT	n/a
H	381+15.61	1.83 LT	n/a
I	380+85.00	67.00 LT	n/a
J	382+45.00	67.00 RT	n/a
K	382+14.39	1.83 RT	n/a
L	382+65.00	75.00 LT	n/a
M	382+65.00	25.00 RT	660.33
N	382+09.99	8.51 RT	660.19
O	382+10.99	5.41 LT	660.15
P	382+45.00	13.00 LT	660.12
Q	385+50.00	13.00 LT	659.31
R	388+60.00	25.00 LT	658.75

POINT	STA 497+52.0		
	STATION	OFFSET	ELEVATION
A	490+56.88	25.00 RT	659.25
B	493+66.88	13.00 RT	659.27
C	496+71.87	13.00 RT	658.02
D	497+06.06	5.34 RT	657.80
E	497+07.04	8.58 LT	657.84
F	496+52.17	25.00 LT	658.39
G	496+52.17	75.00 RT	n/a
H	497+02.64	1.89 LT	n/a
I	496+71.88	67.00 LT	n/a
J	498+31.94	67.00 RT	n/a
K	498+01.41	1.79 RT	n/a
L	498+52.07	75.00 LT	n/a
M	498+52.07	25.00 RT	657.01
N	497+97.00	8.47 RT	657.21
O	497+98.02	5.45 LT	657.16
P	498+31.94	13.00 LT	656.91
Q	501+36.94	13.00 LT	654.78
R	504+46.94	25.00 LT	652.86



NOTES:
 ALL STATIONS, OFFSETS, AND ELEVATIONS SHOWN ARE FOR FINAL PAVING.
 SEE SHEET 67 FOR PLAN AND PROFILES.

REVISIONS	
NAME	DATE

ILLINOIS DEPARTMENT OF TRANSPORTATION
 GEOMETRIC DETAILS
 MEDIAN CROSSOVERS
 FAP 322 (US 51)
 SECTION 11-13
 CHRISTIAN COUNTY

SCALE: DATE 7/12

DRAWN BY CHECKED BY