

F.A.P. RTE.	SECTION	COUNTY	TOTAL SHEETS	SHEET NO.
322	11-13	CHRISTIAN	437	173
STA.		TO STA.		
FED. ROAD DIST. NO.	ILLINOIS	FED. AID PROJECT		

LEGEND

- LIGHTING CONTROLLER, POLE MOUNTED, 240 VOLT, 60 AMP
- LIGHT POLE ALUMINUM, 45' MOUNTING HEIGHT 15' DAVIT ARM WITH 250 WATT HPS HORIZONTAL MOUNT LUMINAIRE
- UNIT DUCT 600V, 2-1C NO. 10, 1C NO. 10 GROUND, (XLP-TYPE USE), 3/4" DIA POLYETHYLENE, UNLESS NOTED OTHERWISE
- UNDERGROUND CONDUIT, PVC, 2" DIA, UNLESS NOTED OTHERWISE

SEE SHEET 168 FOR ELECTRICAL GENERAL NOTES

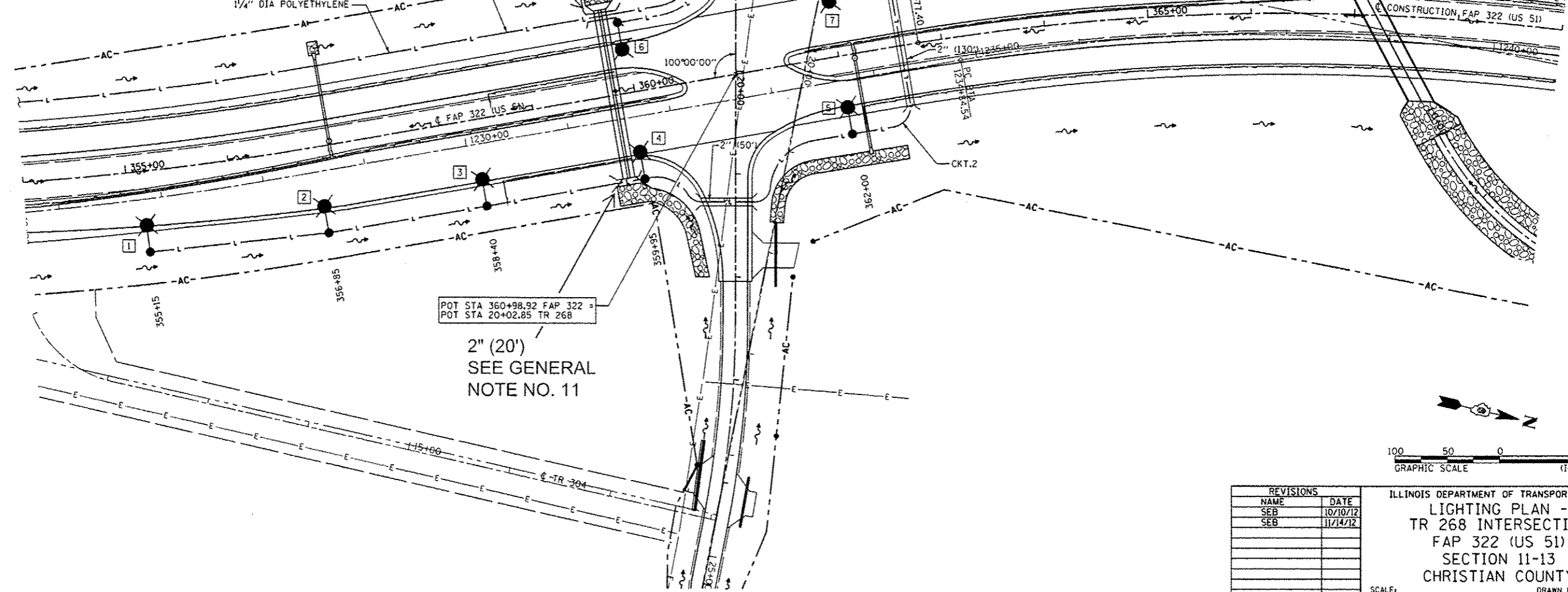
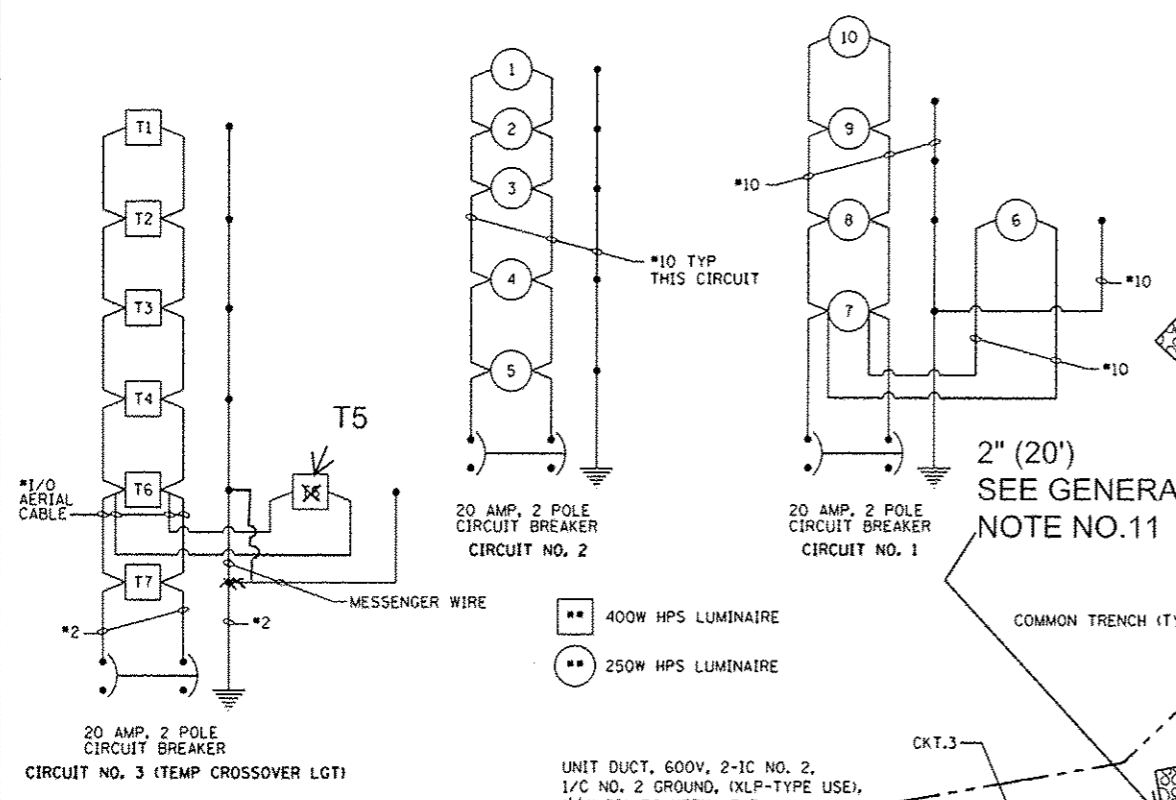
SCH. 80

OVERHEAD UTILITY LINES SHALL BE RELOCATED TO ACCOMMODATE REQUIRED CLEARANCES PER THE NATIONAL ELECTRICAL SAFETY CODE AND/OR REQUIREMENTS OF THE UTILITY COMPANY

2" (40') SEE GENERAL NOTE NO.11

2" (20') SEE GENERAL NOTE NO.11

2" (20') SEE GENERAL NOTE NO. 11



REVISIONS	
NAME	DATE
SEB	10/10/12
SEB	11/14/12

ILLINOIS DEPARTMENT OF TRANSPORTATION
LIGHTING PLAN -
TR 268 INTERSECTION
FAP 322 (US 51)
SECTION 11-13
CHRISTIAN COUNTY

SCALE: DATE 8/27/07 DRAWN BY EBB CHECKED BY

11/14/2012 11:14:20 AM C:\Users\jeb\OneDrive\Documents\11-13 Christian County\Lighting Plan - TR 268 Intersection\FAP 322 (US 51)\Lighting Plan - TR 268 Intersection.dwg