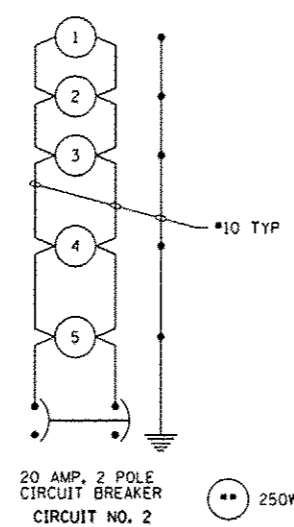
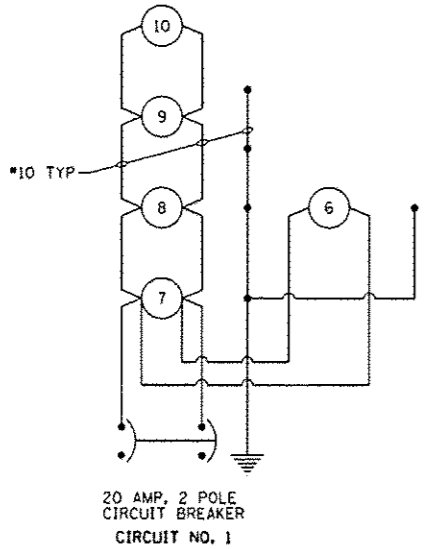
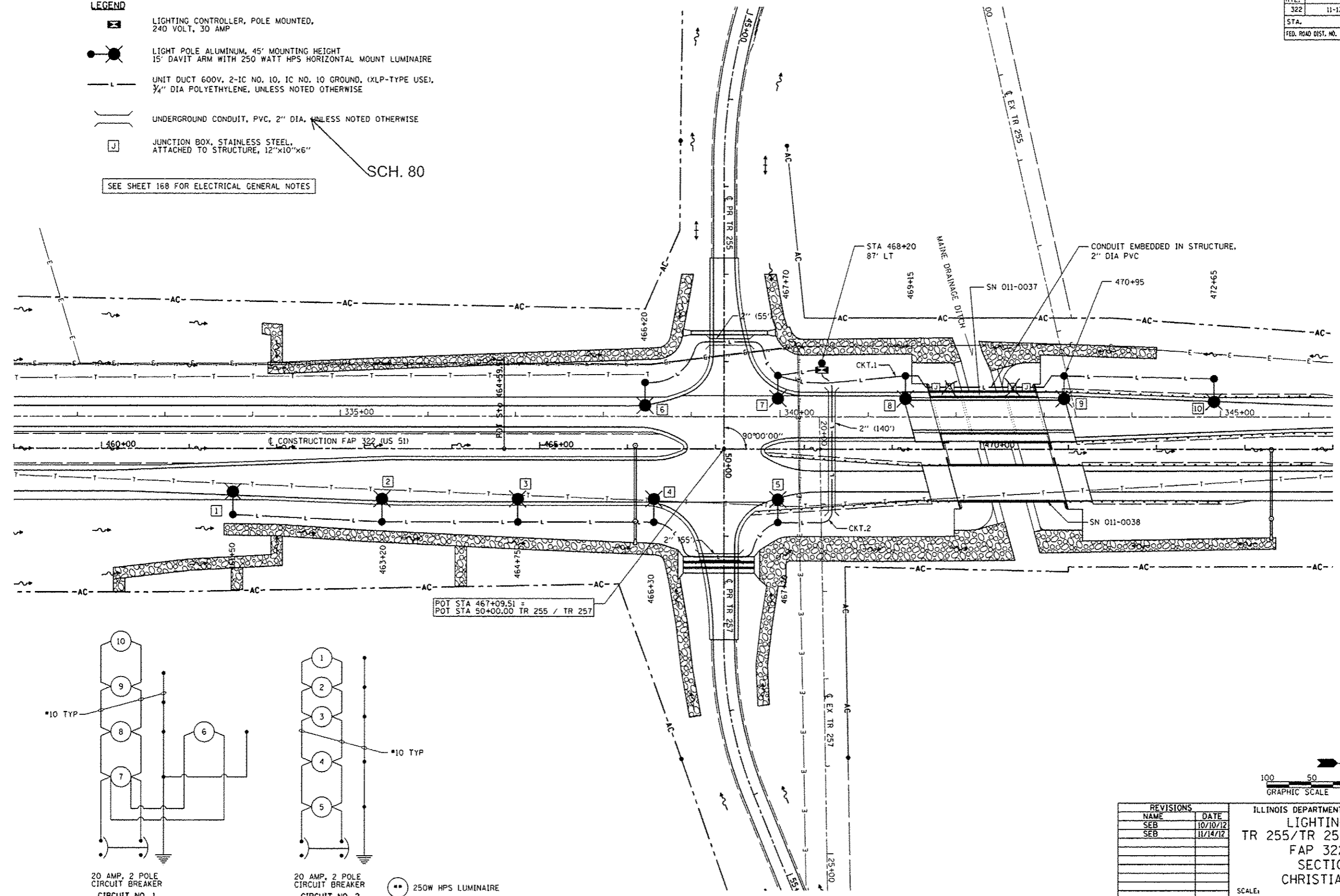


F.A.P. RITE.	SECTION	COUNTY	TOTAL SHEETS	SHEET NO.
322	11-13	CHRISTIAN	437	175
STA.		TO STA.		
FED. ROAD DIST. NO.		ILLINOIS FED. AID PROJECT		

- LEGEND**
- LIGHTING CONTROLLER, POLE MOUNTED, 240 VOLT, 30 AMP
 - LIGHT POLE ALUMINUM, 45' MOUNTING HEIGHT 15' DAVIT ARM WITH 250 WATT HPS HORIZONTAL MOUNT LUMINAIRE
 - UNIT DUCT 600V, 2-1C NO. 10, 1C NO. 10 GROUND, (XLP-TYPE USE), 3/4" DIA POLYETHYLENE, UNLESS NOTED OTHERWISE
 - UNDERGROUND CONDUIT, PVC, 2" DIA. UNLESS NOTED OTHERWISE
 - JUNCTION BOX, STAINLESS STEEL, ATTACHED TO STRUCTURE, 12"x10"x6"

SEE SHEET 168 FOR ELECTRICAL GENERAL NOTES

SCH. 80



•• 250W HPS LUMINAIRE



REVISIONS	
NAME	DATE
SEB	10/10/12
SEB	11/14/12

ILLINOIS DEPARTMENT OF TRANSPORTATION
LIGHTING PLAN -
 TR 255/TR 257 INTERSECTION
 FAP 322 (US 51)
 SECTION 11-13
 CHRISTIAN COUNTY

SCALE: _____ DRAWN BY: EBB
 DATE: 8/27/07 CHECKED BY: _____

11/14/2012

D:\B11\11\18\B11\2012\SOULM Plans_NEW\ACDD_Sch\11-13\257\257-TR255.dwg