

GENERAL NOTES

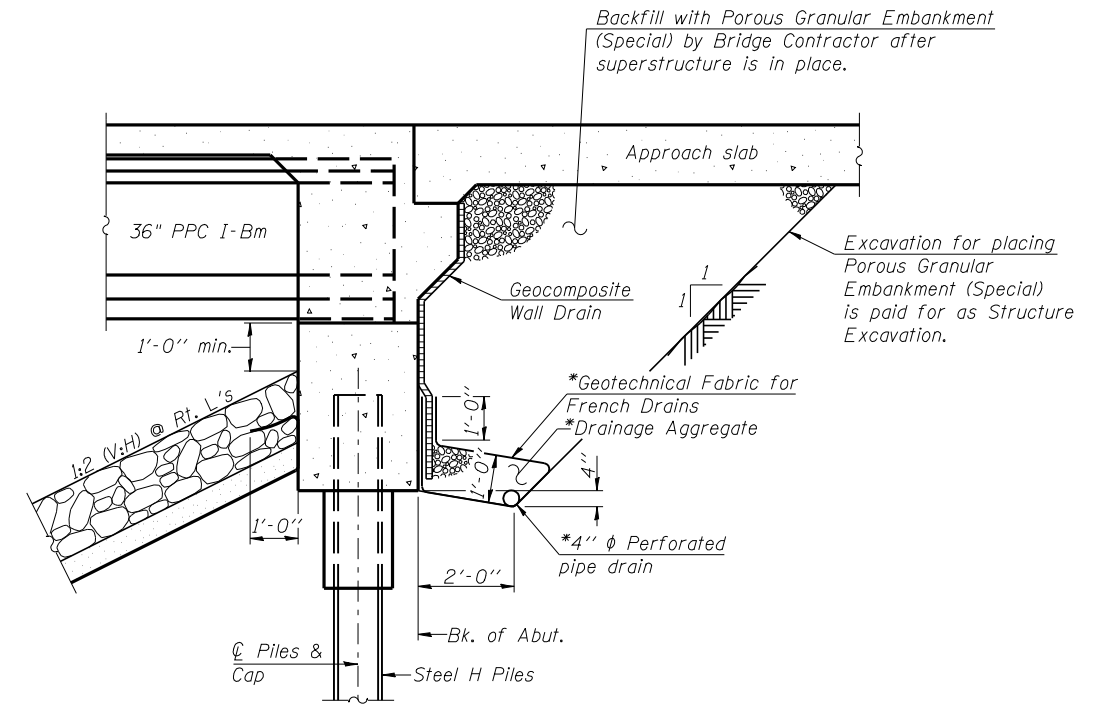
Reinforcement bars shall conform to the requirements of ASTM A706 Grade 60.

Reinforcement bars designated (E) shall be epoxy coated.

Layout of slope protection system may be varied in the field to suit ground conditions as directed by the Engineer.

The embankment configuration shown shall be the minimum that must be placed and compacted prior to construction of the abutments.

Slipforming of the parapet is not allowed.

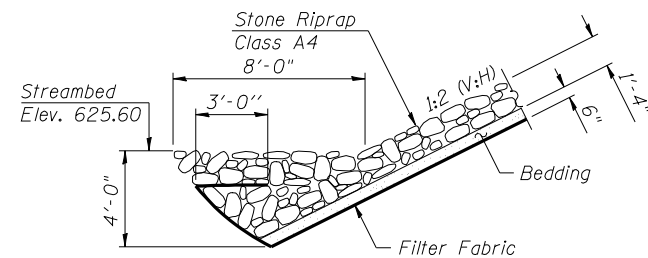


SECTION THRU INTEGRAL ABUTMENT

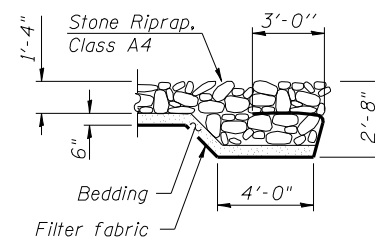
(Horiz. dim. @ Rt. L's)

*Included in the cost of Pipe Underdrains for Structures, 4".

Note:
All drainage system components shall extend to 2'-0" from the end of each wingwall except an outlet pipe shall extend until intersecting with the side slopes. The pipes shall drain into concrete headwalls. (See Article 601.05 of the Standard Specifications and Highway Standard 601101).



SECTION A-A

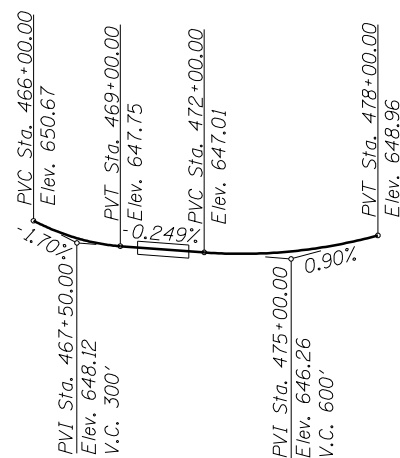


SECTION B-B

STATION 470+20.01
BUILT 20 BY
STATE OF ILLINOIS
F.A.P. RT. 322 SEC. 11-13
LOADING HS20
STR. NO. 011-0038

NAME PLATE

See Std. 515001



FAP RTE. 322 PROFILE GRADE

(Along edge of inside N.B. lane)

The profile grade shows the final elevations after grinding.

TOTAL BILL OF MATERIAL

| ITEM | UNIT | SUPER | SUB | TOTAL |
|--|---------|-------|-------|-------|
| Stone Riprap, Class A4 | Sq. Yd. | - | 1234 | 1234 |
| Filter Fabric | Sq. Yd. | - | 1234 | 1234 |
| Structure Excavation | Cu. Yd. | - | 292 | 292 |
| Cofferdam Excavation | Cu. Yd. | - | 5 | 5 |
| Cofferdam (Type 1) - Location 1 | Each | - | 1 | 1 |
| Cofferdam (Type 1) - Location 2 | Each | - | 1 | 1 |
| Floor Drains | Each | 14 | - | 14 |
| Concrete Structures | Cu. Yd. | - | 226.3 | 226.3 |
| Concrete Superstructure | Cu. Yd. | 349.6 | - | 349.6 |
| Bridge Deck Grooving | Sq. Yd. | 771 | - | 771 |
| Concrete Encasement | Cu. Yd. | - | 8.4 | 8.4 |
| Protective Coat | Sq. Yd. | 947 | - | 947 |
| Furnishing and Erecting Precast Prestressed Concrete I-Beams 36" | Foot | 714 | - | 714 |
| Reinforcement Bars, Epoxy Coated | Pound | 71440 | 22620 | 94060 |
| Bar Splicers | Each | 88 | - | 88 |
| Furnishing Steel Piles HP12x63 | Foot | - | 1436 | 1436 |
| Driving Piles | Foot | - | 1436 | 1436 |
| Test Pile Steel HP12x63 | Each | - | 2 | 2 |
| Pile Shoes | Each | - | 24 | 24 |
| Name Plates | Each | 1 | - | 1 |
| Geocomposite Wall Drain | Sq. Yd. | - | 76 | 76 |
| Porous Granular Embankment, Special | Cu. Yd. | - | 150 | 150 |
| Pipe Underdrains for Structures, 4" | Foot | - | 132 | 132 |
| Diamond Grinding (Bridge Section) | Sq. Yd. | 734 | - | 734 |



| | | |
|--------------|----------------|-----------|
| USER NAME = | DESIGNED - KMB | REVISED - |
| FILE NAME = | CHECKED - MTH | REVISED - |
| PLOT SCALE = | DRAWN - JMD | REVISED - |
| PLOT DATE = | CHECKED - MTH | REVISED - |

STATE OF ILLINOIS
DEPARTMENT OF TRANSPORTATION

GENERAL DATA
STRUCTURE NO. 011-0038

SHEET NO. 2 OF 24 SHEETS

| | | | | |
|---------------------------|---------------|------------------|--------------------|---------------|
| F.A.P. RTE. 322 | SECTION 11-13 | COUNTY CHRISTIAN | TOTAL SHEETS 437 | SHEET NO. 178 |
| | | | CONTRACT NO. 72961 | |
| ILLINOIS FED. AID PROJECT | | | | |