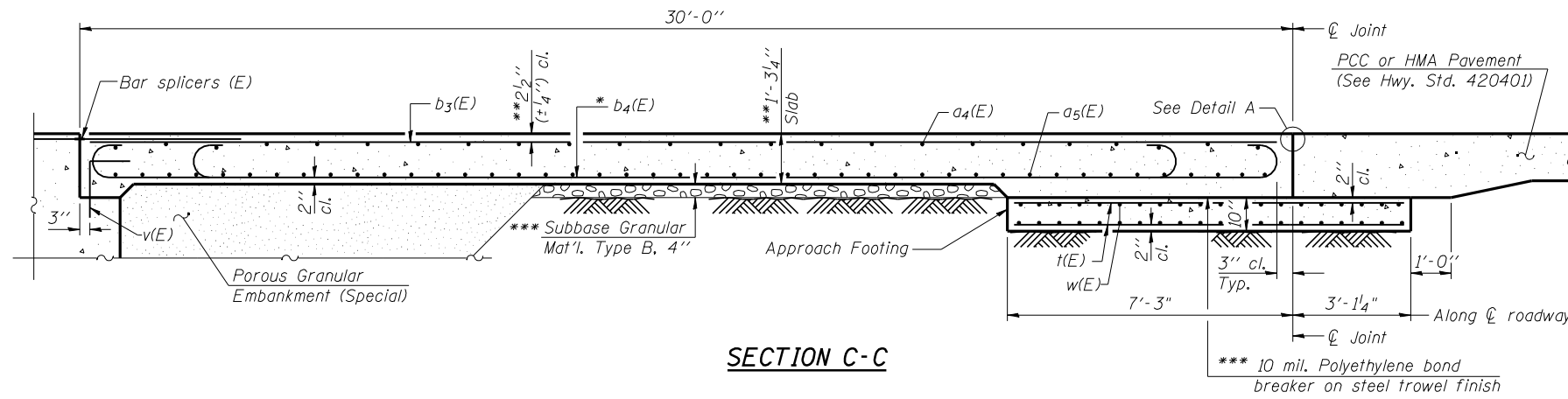
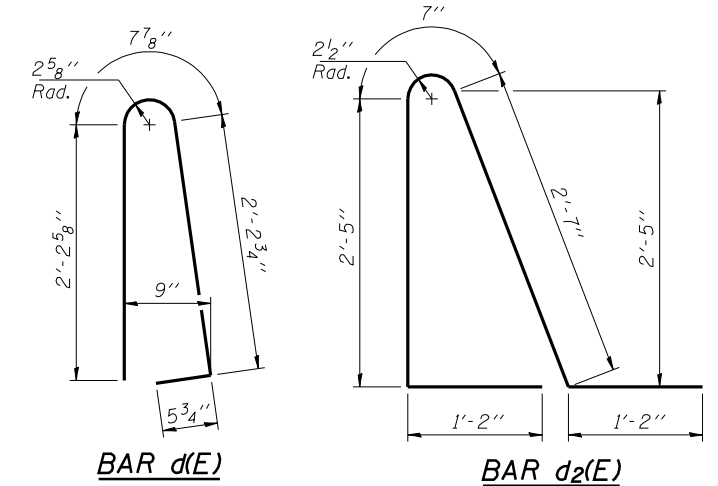


Notes:
 See sheet 10 of 24 for Detail A and View B-B.
 Approach slab and parapet concrete shall be paid for as Concrete Superstructure.
 Approach footing concrete shall be paid for as Concrete Structures.
 Reinforcement shall be paid for as Reinforcement Bars, Epoxy Coated.
 For v(E) bar details, see sheet 8 of 24.
 The approach footing maximum applied service bearing pressure (Q_{max}) = 2.0 ksf.
 For bar splicer details, see sheet 21 of 24.
 Cost of excavation for approach footing included with Concrete Structures.
 For Porous Granular Embankment (Special) and drainage treatment details, see sheet 2 of 24.
 For additional parapet details, see sheet 8 of 24.



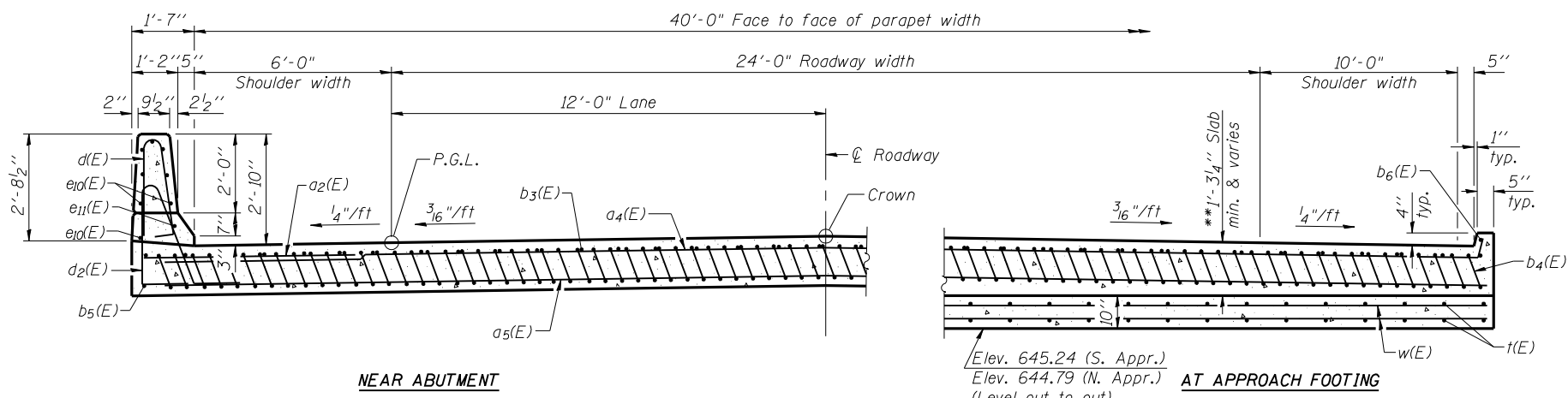
SECTION C-C



BAR d(E)

BAR d2(E)

* Tilt #9 b₄(E) bars as required to maintain clearance.
 ** Prior to grinding.
 *** Cost included with Concrete Superstructure.

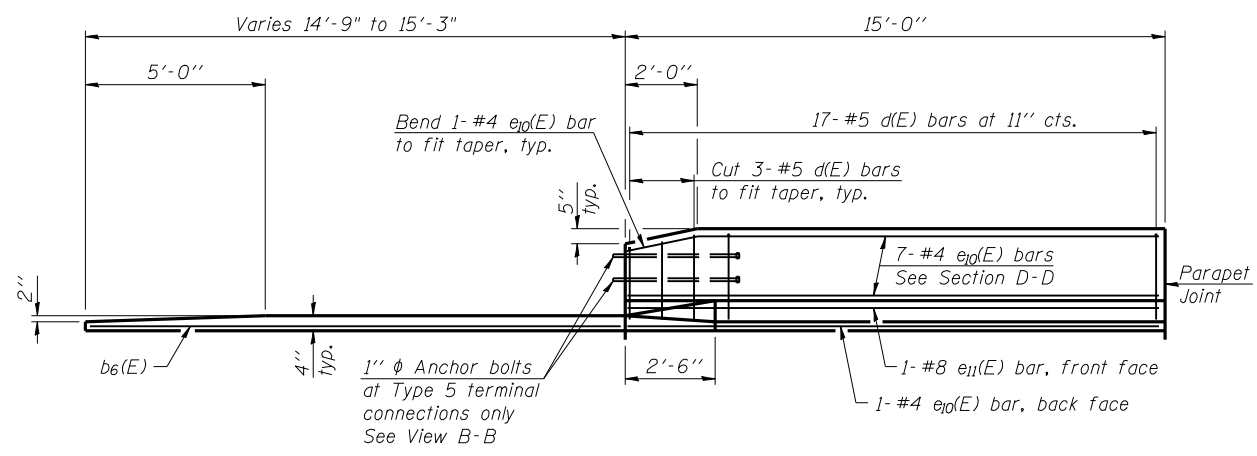


NEAR ABUTMENT

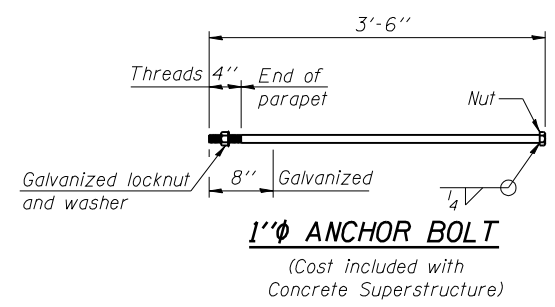
SECTION D-D

(See Plan for dimensions not shown)
 (Looking North)

AT APPROACH FOOTING

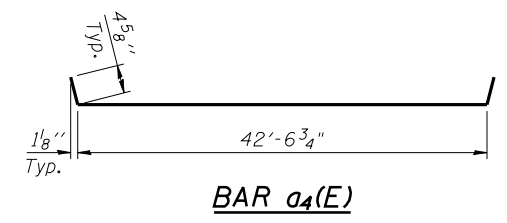


VIEW E-E

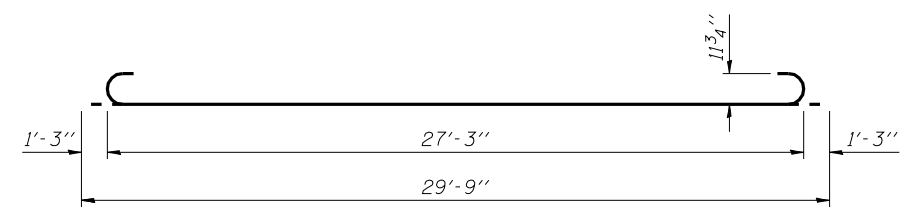


1" ANCHOR BOLT

(Cost included with Concrete Superstructure)



BAR a4(E)



BAR b4(E)

**TWO APPROACHES
 BILL OF MATERIAL**

Bar	No.	Size	Length	Shape
a ₂ (E)	48	#6	6'-6"	U
a ₄ (E)	50	#4	43'-4"	U
a ₅ (E)	92	#5	43'-0"	U
b ₃ (E)	68	#4	29'-8"	U
b ₄ (E)	198	#9	29'-9"	U
b ₅ (E)	4	#4	14'-8"	U
b ₆ (E)	4	#4	14'-6"	U
d(E)	68	#5	5'-7"	U
d ₂ (E)	68	#5	7'-11"	U
e ₁₀ (E)	32	#4	14'-8"	U
e ₁₁ (E)	4	#8	14'-8"	U
t(E)	168	#4	10'-1"	U
w(E)	80	#5	43'-0"	U
Concrete Superstructure			Cu. Yd.	136.7
Concrete Structures			Cu. Yd.	26.7
Reinforcement Bars, Epoxy Coated			Pound	33650

(Sheet 2 of 2)



USER NAME =	DESIGNED - KMB	REVISED -
FILE NAME =	CHECKED - MTH	REVISED -
PLOT SCALE =	DRAWN - JMD	REVISED -
PLOT DATE =	CHECKED - MTH	REVISED -

**STATE OF ILLINOIS
 DEPARTMENT OF TRANSPORTATION**

**BRIDGE APPROACH SLAB DETAILS
 STRUCTURE NO. 011-0038**

SHEET NO. 11 OF 24 SHEETS

F.A.P. RTE. = 322	SECTION = 11-13	COUNTY = CHRISTIAN	TOTAL SHEETS = 437	SHEET NO. = 187
CONTRACT NO. 72961				
ILLINOIS FED. AID PROJECT				