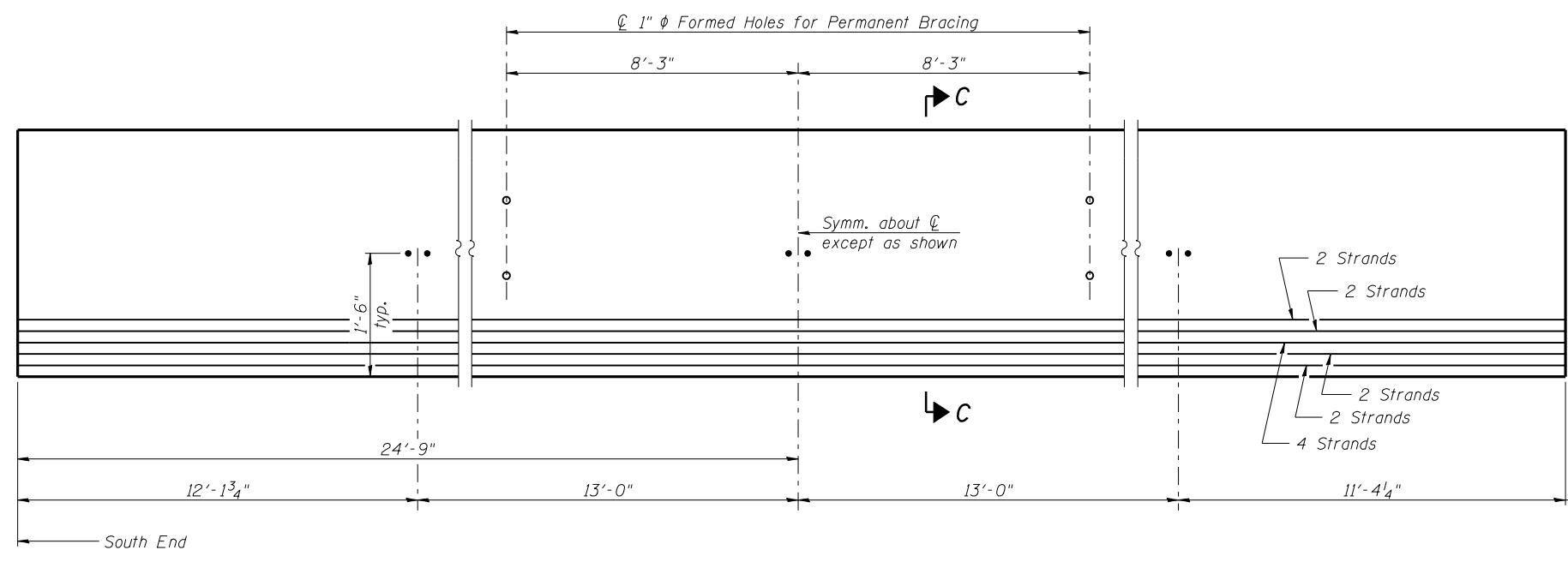


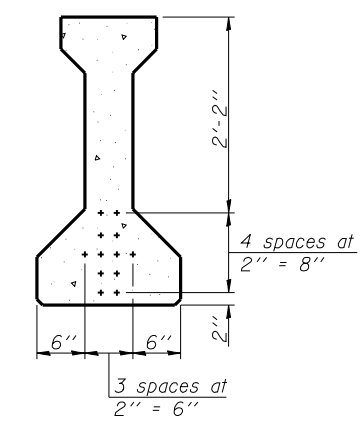
ELEVATION OF BEAM
(Showing reinforcement & dimensions)

Note A:
Hex nuts (top and bottom) with lock washers (top). Only tighten sufficiently to compress lock washers.

* 3 spaces at 3" = 9".
** 4-3/4" φ threaded dowel rods at 3" cts., Each Face



ELEVATION OF BEAM
(Showing prestressing steel)



SECTION C-C

*****BAR LIST
ONE BEAM ONLY**

Bar	No.	Size	Length	Shape
G1	81	#4	7'-5"	∩L
G2	8	#4	5'-8"	∩
G3	6	#5	25'-9"	—
G4	38	#3	4'-1"	∩
G6	4	#8	6'-6"	—

***For information only
Notes:
See sheet 15 of 24 for additional details and Bill of Material.
Required release strength, f'ci, shall be 5,000 psi.