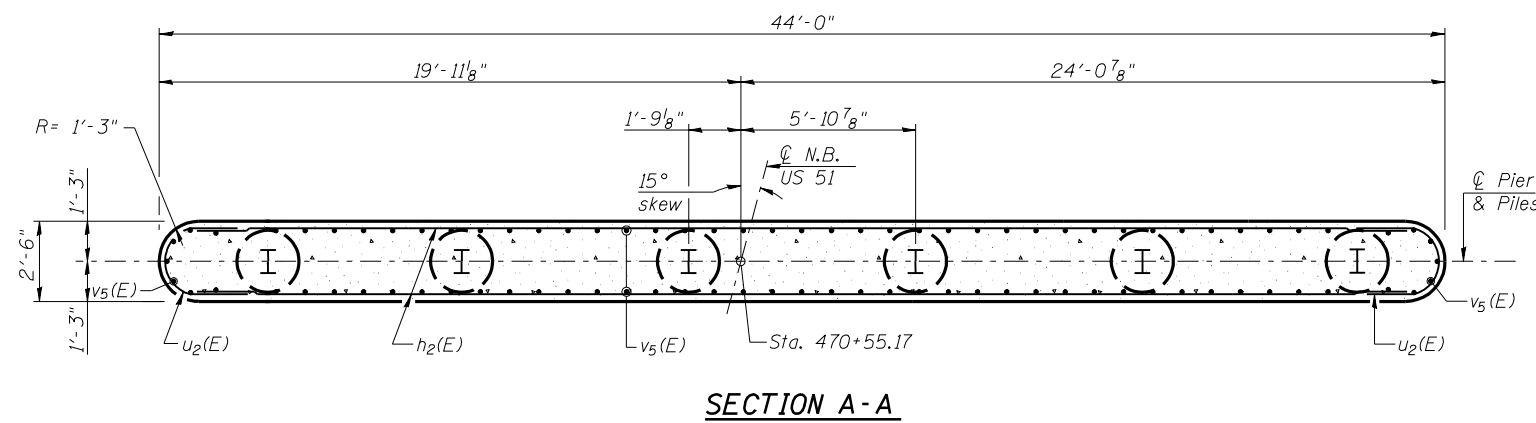
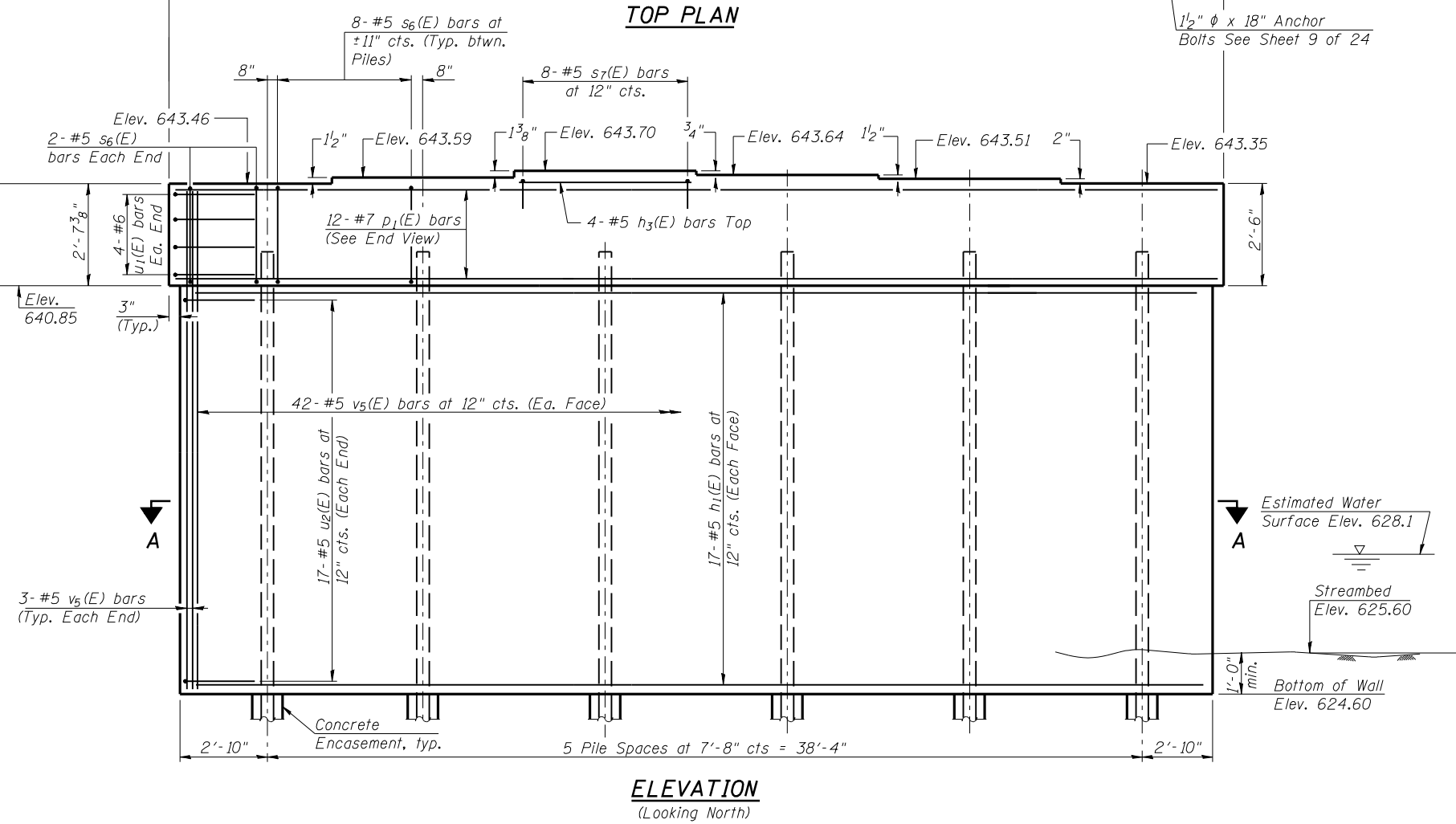
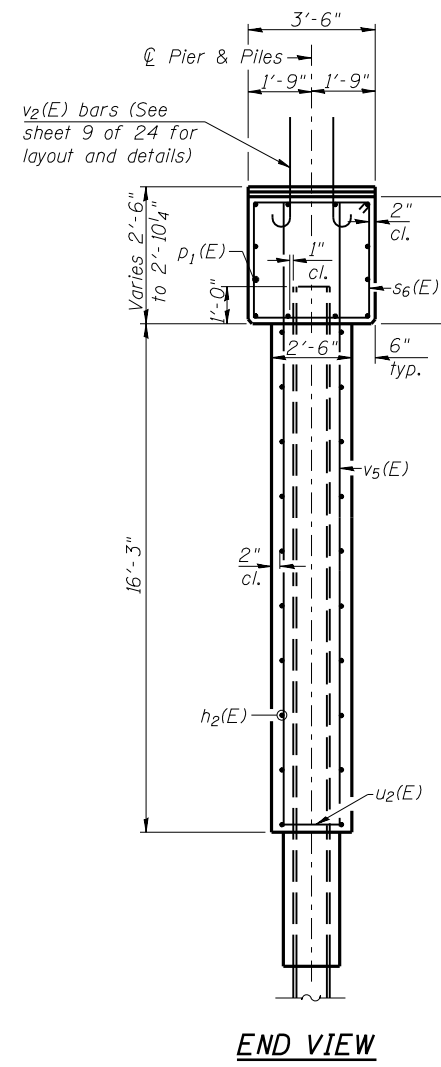
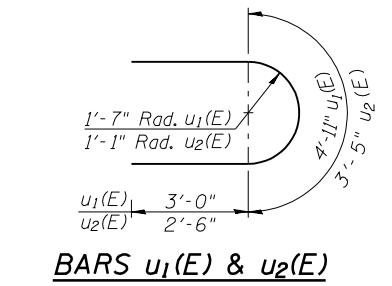
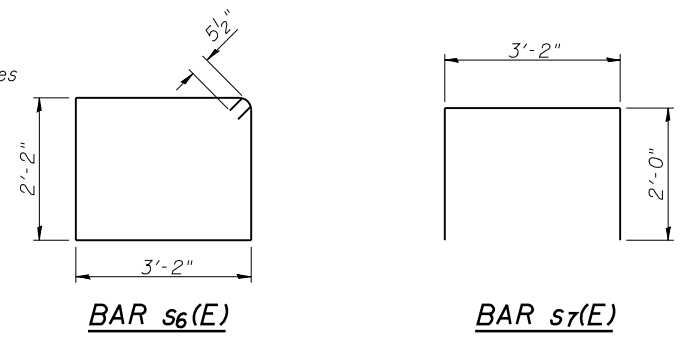
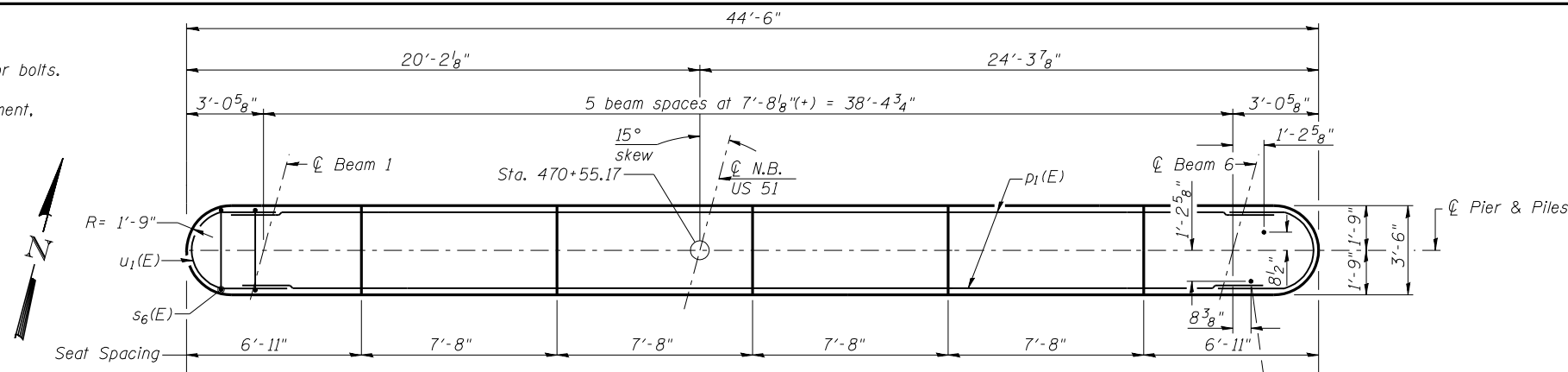


Notes:
 Space reinforcement in cap to miss anchor bolts.
 Four steps monolithically with cap.
 For details of piles and Concrete Encasement,
 see sheet 20 of 24.



PILE DATA
 Type: Steel HPI2x63 with Pile Shoes
 Nominal Required Bearing: 497 k
 Allowable Resistance Available: 158 k
 Est. Length: 64 ft
 No. Production Piles: 6
 No. Test Piles: 0

BILL OF MATERIAL

Bar	No.	Size	Length	Shape
h2(E)	34	#5	41'-6"	—
h3(E)	4	#5	7'-4"	—
p1(E)	12	#7	41'-0"	—
s6(E)	44	#5	11'-7"	U
s7(E)	8	#5	7'-2"	□
u1(E)	8	#6	10'-11"	U
u2(E)	34	#5	8'-5"	U
v2(E)	32	#8	4'-2"	C
v5(E)	90	#5	18'-0"	—
Concrete Structures			Cu. Yd.	80.6
Reinforcement Bars, Epoxy Coated			Pound	5580
Cofferdam Excavation			Cu. Yd.	2.5
Furnishing Steel Piles HPI2x63			Foot	384
Driving Piles			Foot	384
Cofferdam (Type 1) - Location 2			Each	1
Concrete Encasement			Cu. Yd.	2.1
Pile Shoes			Each	6



USER NAME =	DESIGNED - KMB	REVISED -
FILE NAME =	CHECKED - MTH	REVISED -
PLOT SCALE =	DRAWN - JMD	REVISED -
PLOT DATE =	CHECKED - MTH	REVISED -

STATE OF ILLINOIS
 DEPARTMENT OF TRANSPORTATION

PIER 2 DETAILS
 STRUCTURE NO. 011-0038
 SHEET NO. 19 OF 24 SHEETS

F.A.P. RTE. = 322	SECTION = 11-13	COUNTY = CHRISTIAN	TOTAL SHEETS = 437	SHEET NO. = 195
CONTRACT NO. = 72961			ILLINOIS FED. AID PROJECT	