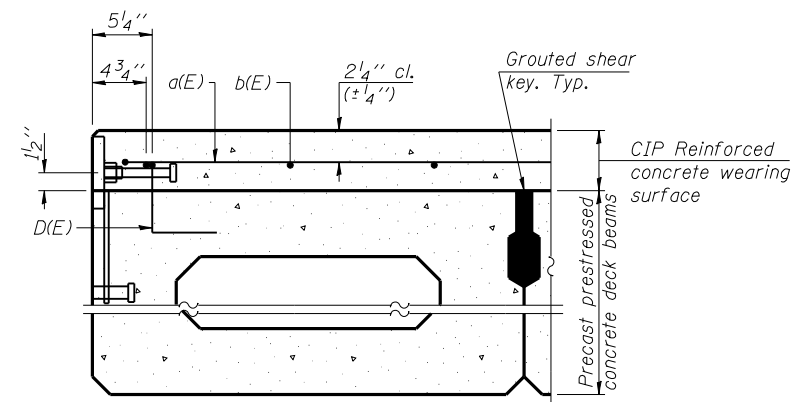
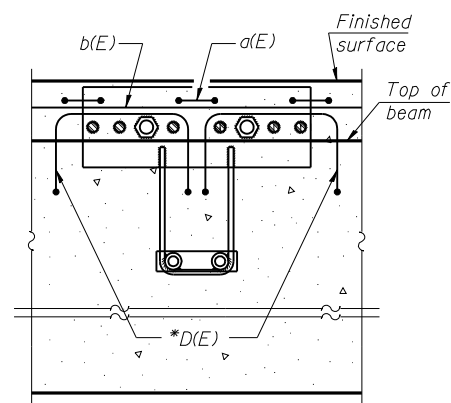


PLAN

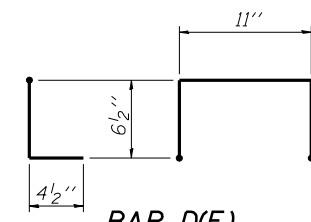
Notes:
Formwork necessary for the wearing surface may be secured utilizing the bottom rail anchorage inserts and/or additional inserts cast into the beam.



SECTION THRU FASCIA BEAM

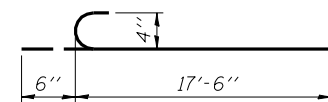


SECTION A-A

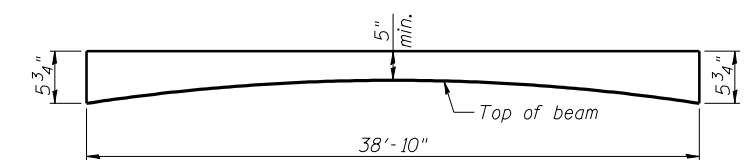


BAR D(E)

* Place 2- #4 D(E) bars in beam at each post location as shown. D(E) bar included in cost of beam.



BAR a(E)



**** ANTICIPATED CONCRETE WEARING SURFACE PROFILE**
(For information only)

**Add 3/8" over center beam at \hat{C} roadway.

**SUPERSTRUCTURE
BILL OF MATERIAL**

Bar	No.	Size	Length	Shape
a(E)	234	#4	18'-0"	
b(E)	112	#4	31'-1"	
Reinforcement Bars, Epoxy Coated			Pound	5140
Concrete Wearing Surface, 5"			Sq. Yd.	363
Bridge Deck Grooving			Sq. Yd.	363
Protective Coat			Sq. Yd.	374