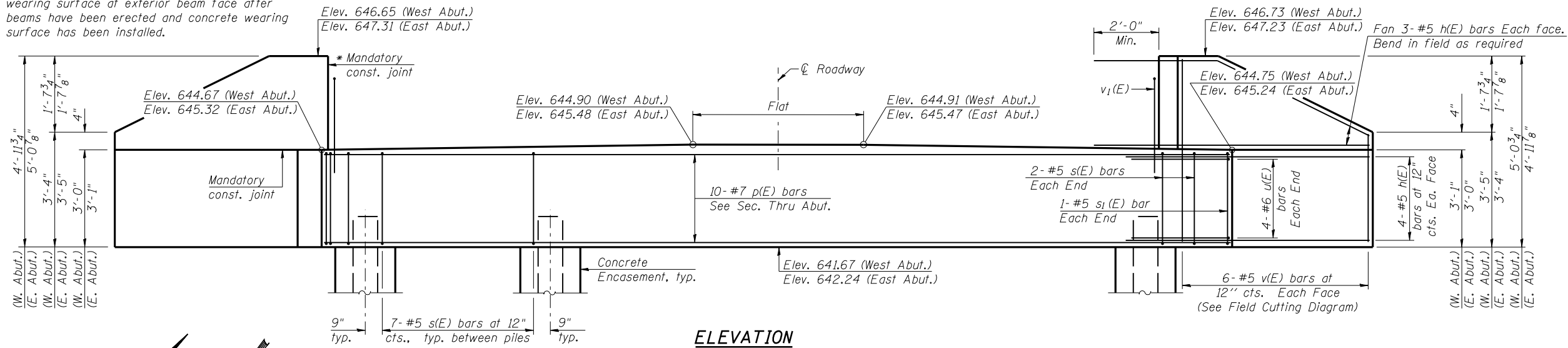
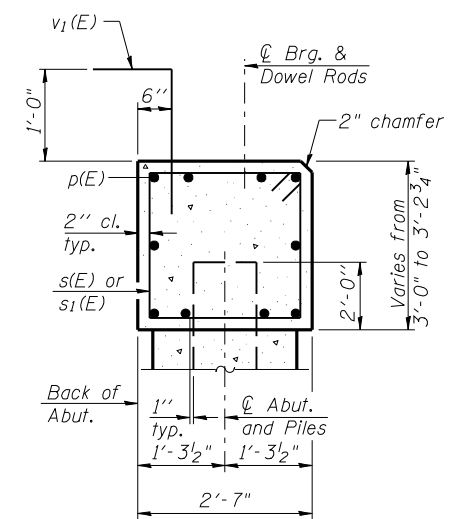


* Cast top of wingwall flush with top of concrete wearing surface at exterior beam face after beams have been erected and concrete wearing surface has been installed.

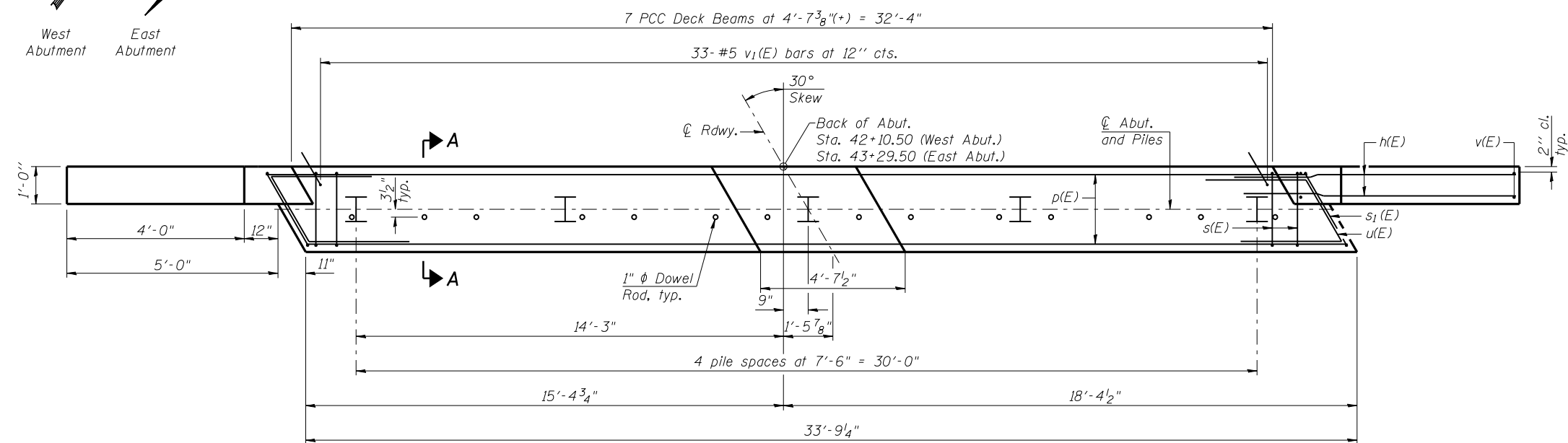
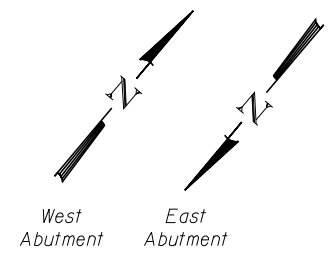


ELEVATION



SECTION A-A

(Dimensions are at Rt. L's)



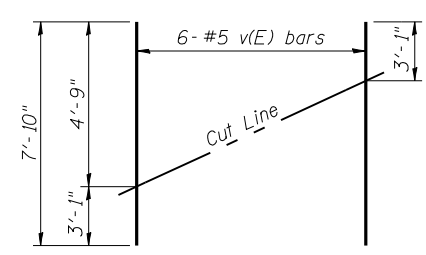
PLAN

W. ABUT. PILE DATA

Type: HP 12x53 w/Pile Shoes
 Nominal Required Bearing: 336 kips
 Factored Resistance Available: 185 kips
 Est. Length: 62 Ft.
 No. Production Piles: 5
 No. Test Piles: 0

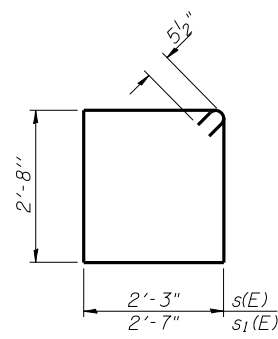
E. ABUT. PILE DATA

Type: HP 12x53 w/Pile Shoes
 Nominal Required Bearing: 366 kips
 Factored Resistance Available: 201 kips
 Est. Length: 59 Ft.
 No. Production Piles: 4
 No. Test Piles: 1

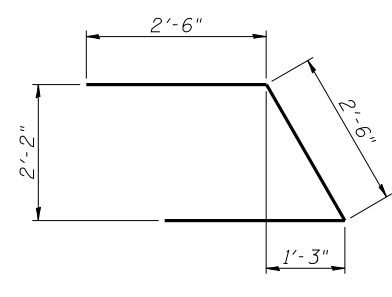


FIELD CUTTING DIAGRAM

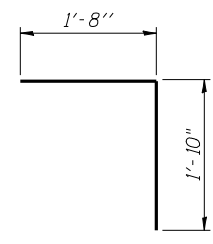
Order v(E) full length. Cut as shown and use remainder of bars in opposite face.



BARS s(E) & s1(E)



BAR u(E)



BAR v1(E)

BILL OF MATERIAL

(Both Abutments)

| Bar | No. | Size | Length | Shape |
|----------------------------------|-----|---------|--------|-------|
| h(E) | 56 | #5 | 7'-0" | — |
| p(E) | 20 | #7 | 33'-6" | — |
| s(E) | 64 | #5 | 10'-9" | □ |
| s1(E) | 4 | #5 | 11'-5" | □ |
| u(E) | 16 | #6 | 7'-6" | ▤ |
| v(E) | 24 | #5 | 7'-10" | — |
| v1(E) | 66 | #5 | 3'-6" | └ |
| Structure Excavation | | Cu. Yd. | 40 | |
| Concrete Structures | | Cu. Yd. | 23.6 | |
| Reinforcement Bars, Epoxy Coated | | Pound | 3170 | |
| Furnishing Steel Piles HP 12x53 | | Foot | 546 | |
| Driving Piles | | Foot | 546 | |
| Test Pile, Steel HP 12x53 | | Each | 1 | |
| Pile Shoes | | Each | 10 | |
| Concrete Encasement | | Cu. Yd. | 3.5 | |

For details of piles and Concrete Encasement, see sheet 14 of 16.
 Space reinforcement in cap to miss dowel rods.