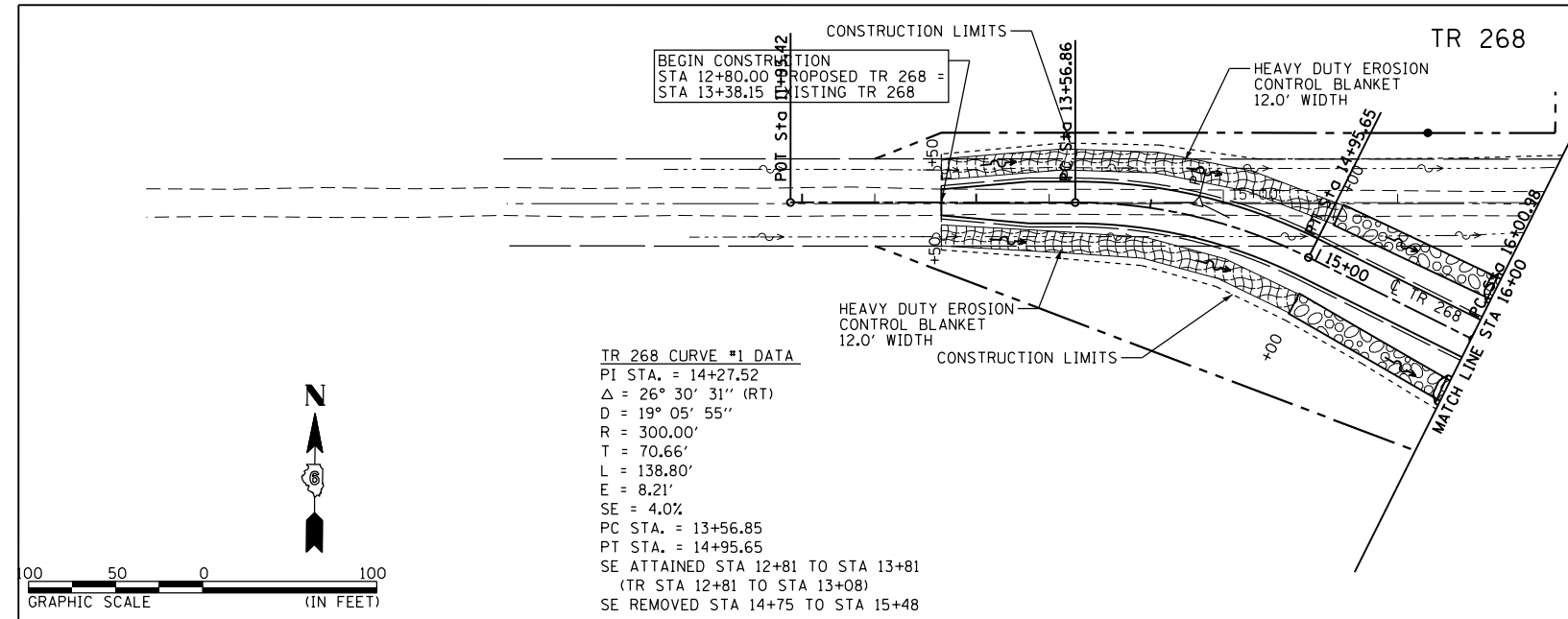
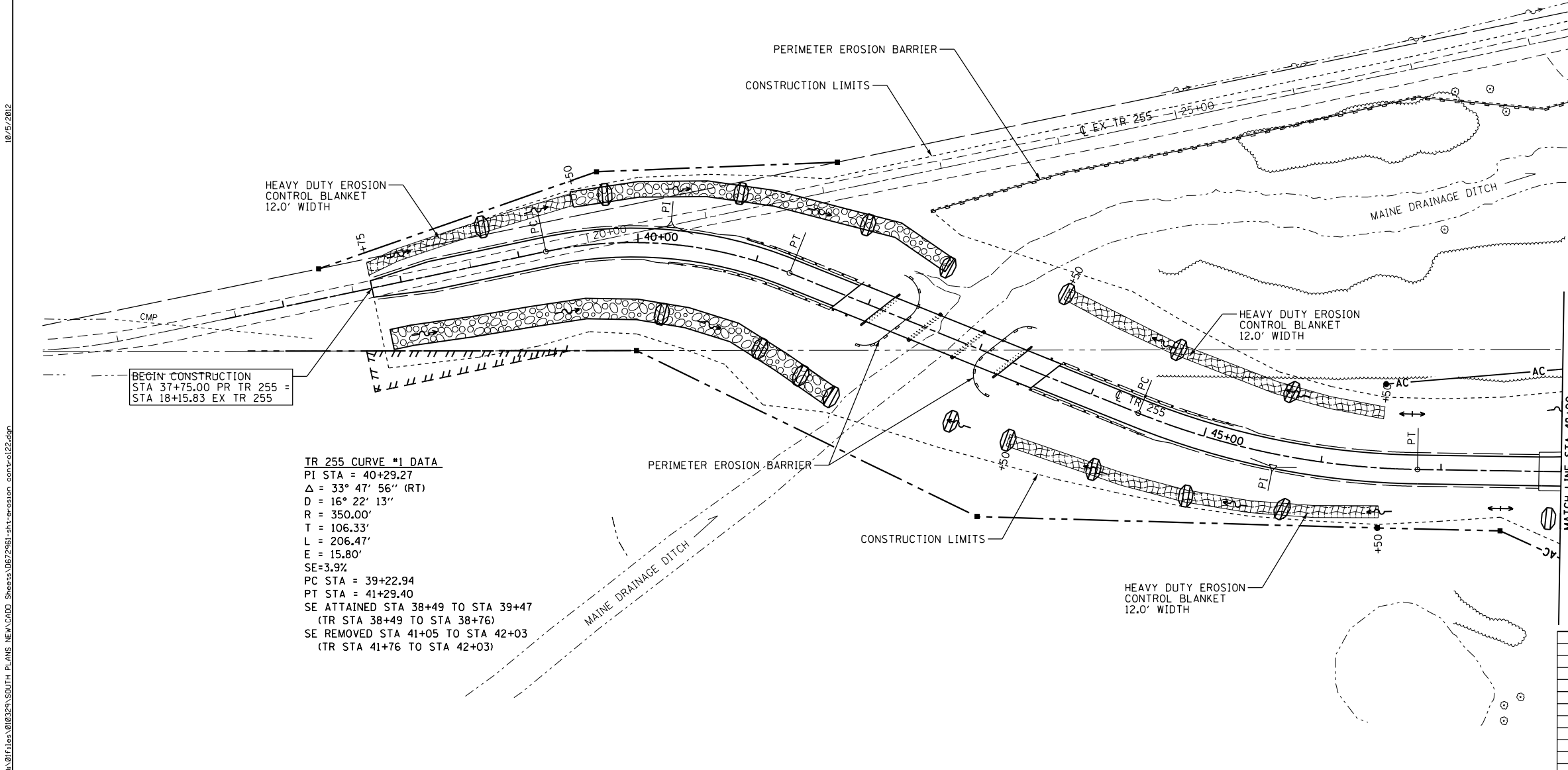


F.A.P. RTE.	SECTION	COUNTY	TOTAL SHEETS	SHEET NO.
322	11-13	CHRISTIAN	437	284
STA.		TO STA.		
FED. ROAD DIST. NO.		ILLINOIS FED. AID PROJECT		



**TR 268 CURVE #1 DATA**  
 PI STA. = 14+27.52  
 $\Delta$  = 26° 30' 31" (RT)  
 D = 19° 05' 55"  
 R = 300.00'  
 T = 70.66'  
 L = 138.80'  
 E = 8.21'  
 SE = 4.0%  
 PC STA. = 13+56.85  
 PT STA. = 14+95.65  
 SE ATTAINED STA 12+81 TO STA 13+81  
 (TR STA 12+81 TO STA 13+08)  
 SE REMOVED STA 14+75 TO STA 15+48

TR 255



BEGIN CONSTRUCTION  
 STA 37+75.00 PR TR 255 =  
 STA 18+15.83 EX TR 255

**TR 255 CURVE #1 DATA**  
 PI STA = 40+29.27  
 $\Delta$  = 33° 47' 56" (RT)  
 D = 16° 22' 13"  
 R = 350.00'  
 T = 106.33'  
 L = 206.47'  
 E = 15.80'  
 SE=3.9%  
 PC STA = 39+22.94  
 PT STA = 41+29.40  
 SE ATTAINED STA 38+49 TO STA 39+47  
 (TR STA 38+49 TO STA 38+76)  
 SE REMOVED STA 41+05 TO STA 42+03  
 (TR STA 41+76 TO STA 42+03)

**TR 255 CURVE #2 DATA**  
 PI STA = 45+62.70  
 $\Delta$  = 21° 00' 00" (LT)  
 D = 8° 48' 53"  
 R = 650.00'  
 T = 120.47'  
 L = 238.24'  
 E = 11.07'  
 SE=3.3%  
 PC STA = 44+42.23  
 PT STA = 46+80.47  
 SE ATTAINED STA 43+75 TO STA 44+62  
 (TR STA 43+75 TO STA 44+02)  
 SE REMOVED STA 46+60 TO STA 47+47  
 (TR STA 47+20 TO STA 47+47)

REVISIONS	
NAME	DATE

ILLINOIS DEPARTMENT OF TRANSPORTATION  
 STORM WATER POLLUTION  
 PREVENTION PLAN  
 FAP 322 (US 51)  
 SECTION 11-13  
 CHRISTIAN COUNTY  
 SCALE: 1"=50'  
 DATE: \_\_\_\_\_  
 DRAWN BY SEB  
 CHECKED BY \_\_\_\_\_