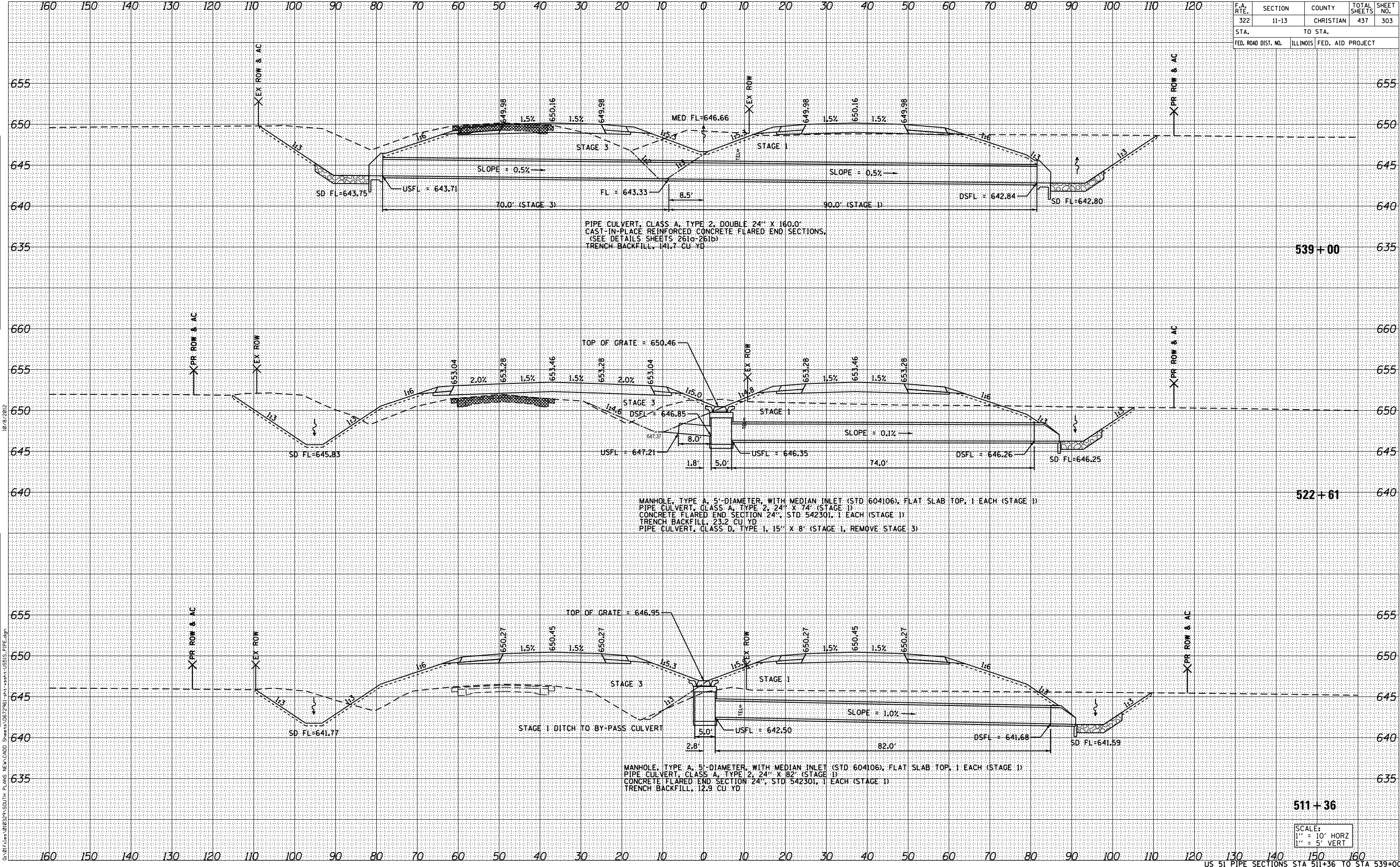


F.A. RTE.	SECTION	COUNTY	TOTAL SHEETS	SHEET NO.
322	11-13	CHRISTIAN	437	303
STA.		TO STA.		
FED. ROAD DIST. NO.	ILLINOIS	FED. AID PROJECT		



PIPE CULVERT, CLASS A, TYPE 2, DOUBLE 24" X 160.0"
 CAST-IN-PLACE REINFORCED CONCRETE FLARED END SECTIONS,
 (SEE DETAILS SHEETS 261a-261b)
 TRENCH BACKFILL, 141.7 CU YD

MANHOLE, TYPE A, 5'-DIAMETER, WITH MEDIAN INLET (STD 604106), FLAT SLAB TOP, 1 EACH (STAGE 1)
 PIPE CULVERT, CLASS A, TYPE 2, 24" X 74' (STAGE 1)
 CONCRETE FLARED END SECTION 24", STD 542301, 1 EACH (STAGE 1)
 TRENCH BACKFILL, 23.2 CU YD
 PIPE CULVERT, CLASS D, TYPE 1, 15" X 8' (STAGE 1, REMOVE STAGE 3)

MANHOLE, TYPE A, 5'-DIAMETER, WITH MEDIAN INLET (STD 604106), FLAT SLAB TOP, 1 EACH (STAGE 1)
 PIPE CULVERT, CLASS A, TYPE 2, 24" X 82' (STAGE 1)
 CONCRETE FLARED END SECTION 24", STD 542301, 1 EACH (STAGE 1)
 TRENCH BACKFILL, 12.9 CU YD

539 + 00

522 + 61

511 + 36

SCALE:
 1" = 10' HORZ
 1" = 5' VERT

DATE

BY

FINAL SURVEY

SURVEYED

NOTE BOOK

TEMPLATE

AREAS CHECKED

NO.

DATE

BY

ORIGINAL SURVEY

SURVEYED

NOTE BOOK

TEMPLATE

AREAS CHECKED

NO.

10/09/2012
 G:\011\11-011329\US011\PLANS\NEW\CADD\Sheets\057961-11-13\shy-US011-PIPE.dgn