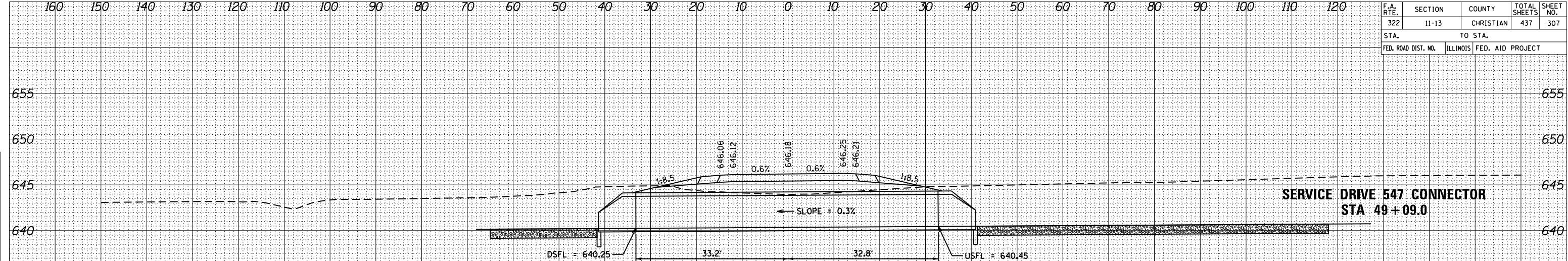


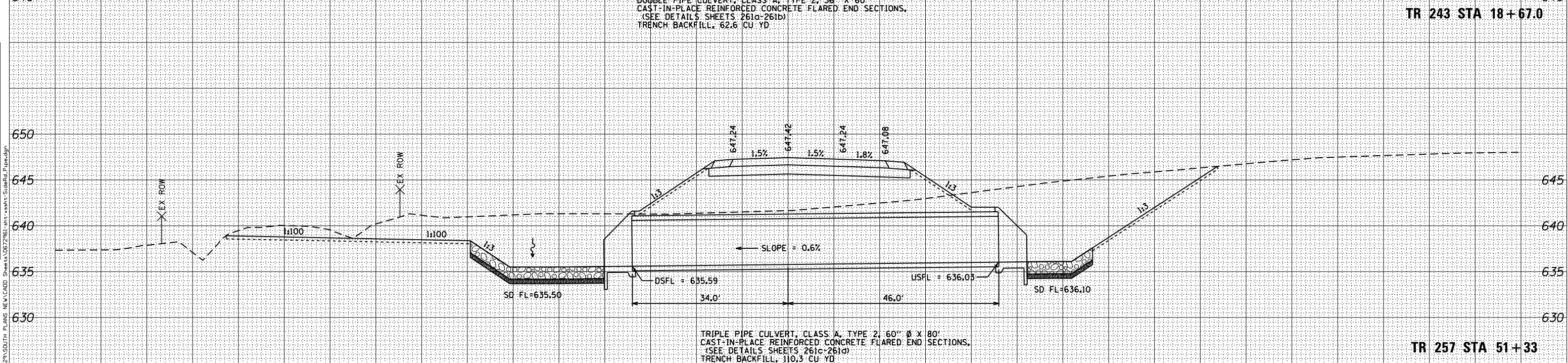
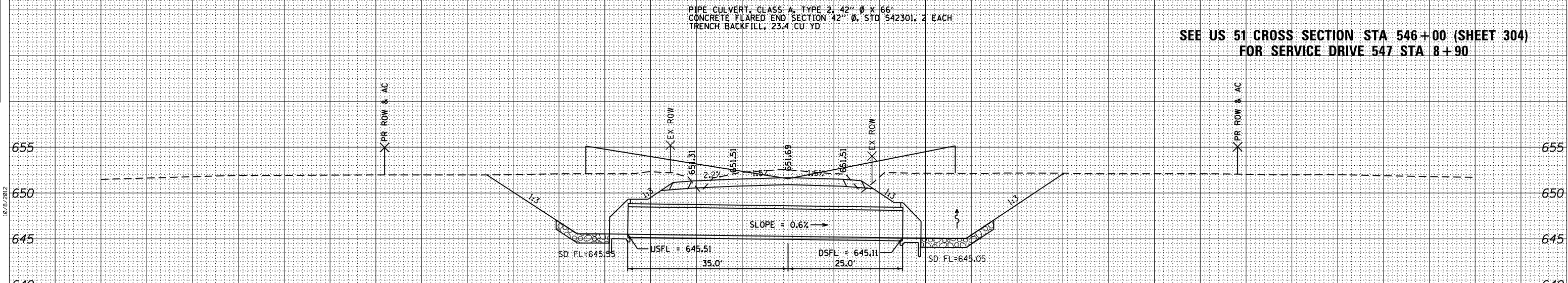
F.A. RTE.	SECTION	COUNTY	TOTAL SHEETS	SHEET NO.
322	11-13	CHRISTIAN	437	307
STA.		TO STA.		
FED. ROAD DIST. NO.		ILLINOIS	FED. AID PROJECT	

DATE	BY
FINAL SURVEY	SURVEYED
NOTE BOOK	TEMPLATE
	AREAS CHECKED
	NO.



**SEE US 51 CROSS SECTION STA 546+00 (SHEET 304)
FOR SERVICE DRIVE 547 STA 8+90**

DATE	BY
ORIGINAL SURVEY	SURVEYED
NOTE BOOK	TEMPLATE
	AREAS CHECKED
	NO.



SCALE:
1" = 10' HORZ
1" = 5' VERT