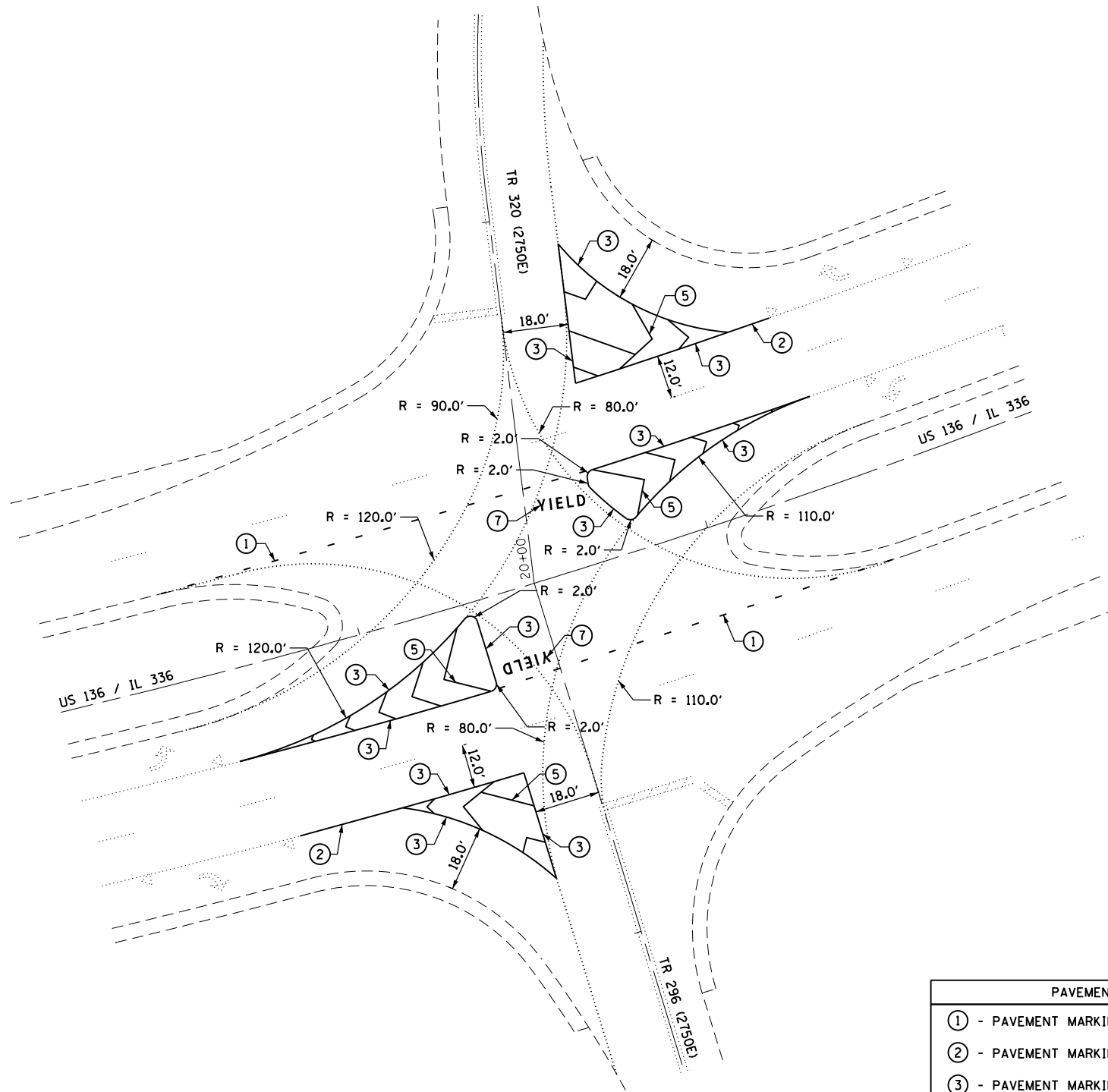


NOTES:

1. ALL PAVEMENT MARKING SHALL BE MODIFIED URETHANE UNLESS OTHERWISE NOTED.
2. ALL 12 INCH DIAGONALS AND CHEVRONS SPACED AT 10.0' CENTERS UNLESS OTHERWISE NOTED.

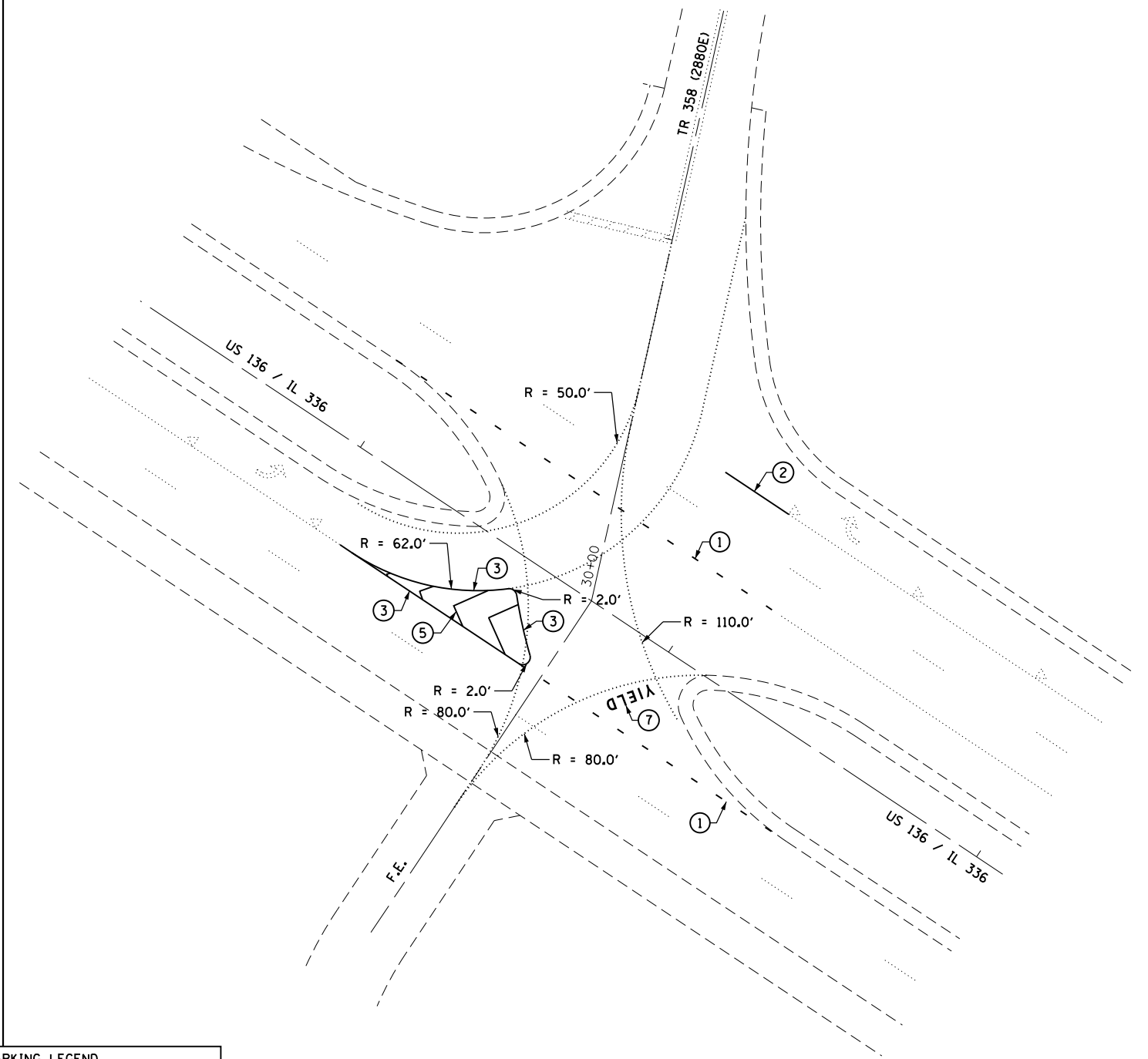


US 136 /IL 336 & TR 296 /2750E & TR 320 /2750E
PLAN VIEW

PAVEMENT MARKING LEGEND	
①	- PAVEMENT MARKING - LINE 6" DOTTED - WHITE
②	- PAVEMENT MARKING - LINE 6" SOLID - WHITE
③	- PAVEMENT MARKING - LINE 8" SOLID - WHITE
④	- PAVEMENT MARKING - LINE 8" SOLID - YELLOW
⑤	- PAVEMENT MARKING - LINE 12" SOLID - WHITE
⑥	- PAVEMENT MARKING - LINE 12" SOLID - YELLOW
⑦	- PAVEMENT MARKING - LETTERS AND SYMBOLS

NOTES:

1. ALL PAVEMENT MARKING SHALL BE MODIFIED URETHANE UNLESS OTHERWISE NOTED.
2. ALL 12 INCH DIAGONALS AND CHEVRONS SPACED AT 10.0' CENTERS UNLESS OTHERWISE NOTED.



US 136 /IL 336 & TR 358 /2880E
PLAN VIEW

FILE NAME =	USER NAME = sparksgw	DESIGNED -	REVISED -
ct:\pw\work\p\dot\sparksgw\10309492\0672\F58-sht_IL_336.dgn		DRAWN -	REVISED -
	PLOT SCALE = 40.0' / in.	CHECKED -	REVISED -
	PLOT DATE = Oct-18-2012 02:46:44PM	DATE -	REVISED -

STATE OF ILLINOIS
DEPARTMENT OF TRANSPORTATION

US 136 /IL 336 - HANCOCK COUNTY PAVEMENT MARKING IMPROVEMENTS			
SCALE: 1" = 20'	SHEET	OF SHEETS	STA. TO STA.

F.A. RTE.	SECTION	COUNTY	TOTAL SHEETS	SHEET NO.
	**		45	34
CONTRACT NO. 72F58				
ILLINOIS FED. AID PROJECT				