

STATE OF ILLINOIS
 DEPARTMENT OF TRANSPORTATION
 DIVISION OF HIGHWAYS

**PROPOSED
 HIGHWAY PLANS**

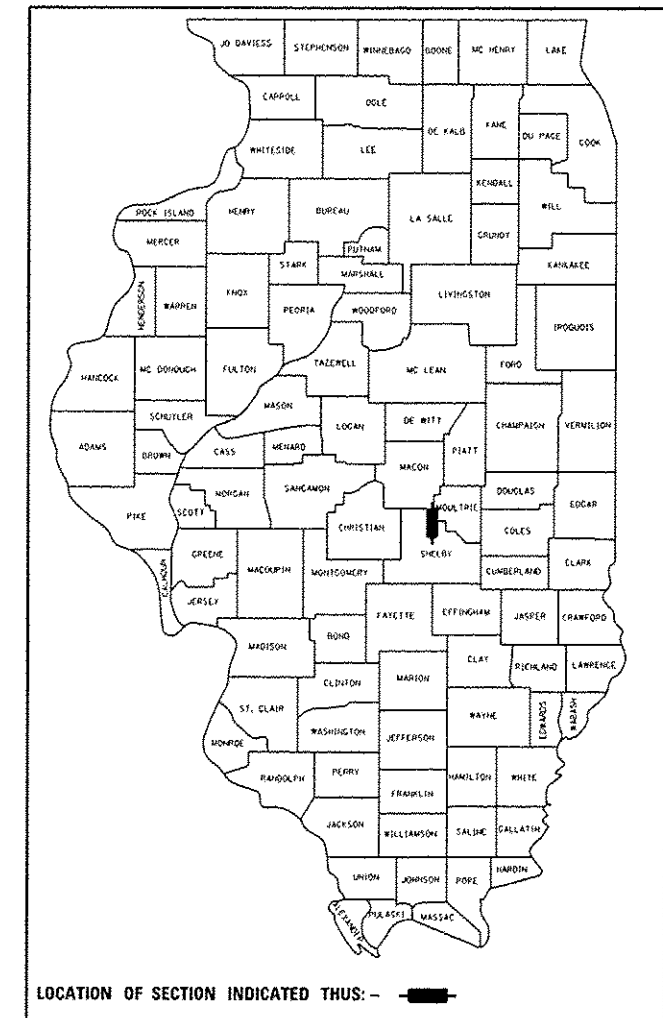
FAP ROUTE 770 (IL 128)
 SECTION D7 HMA SAFETY SHLD 2013-1
 PROJECT ACHSIP-ACF-0770(016)
 SAFETY IMPROVEMENTS
 SHELBY AND MOULTRIE COUNTIES

C-97-022-12

F.A.P. RTE.	SECTION	COUNTY	TOTAL SHEETS	SHEET NO.
770		ILLINOIS	8	1

• D7 HMA SAFETY SHLD 2013-1
 • Shelby & Moultrie *** 8+1=9

D-97-014-12



FOR INDEX OF SHEETS, SEE SHEET NO. 2

STATION EQUATIONS

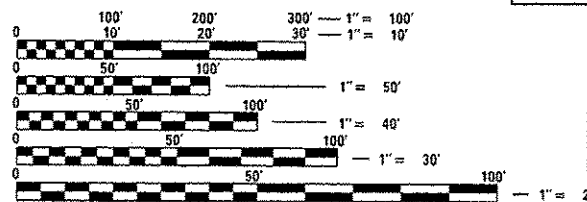
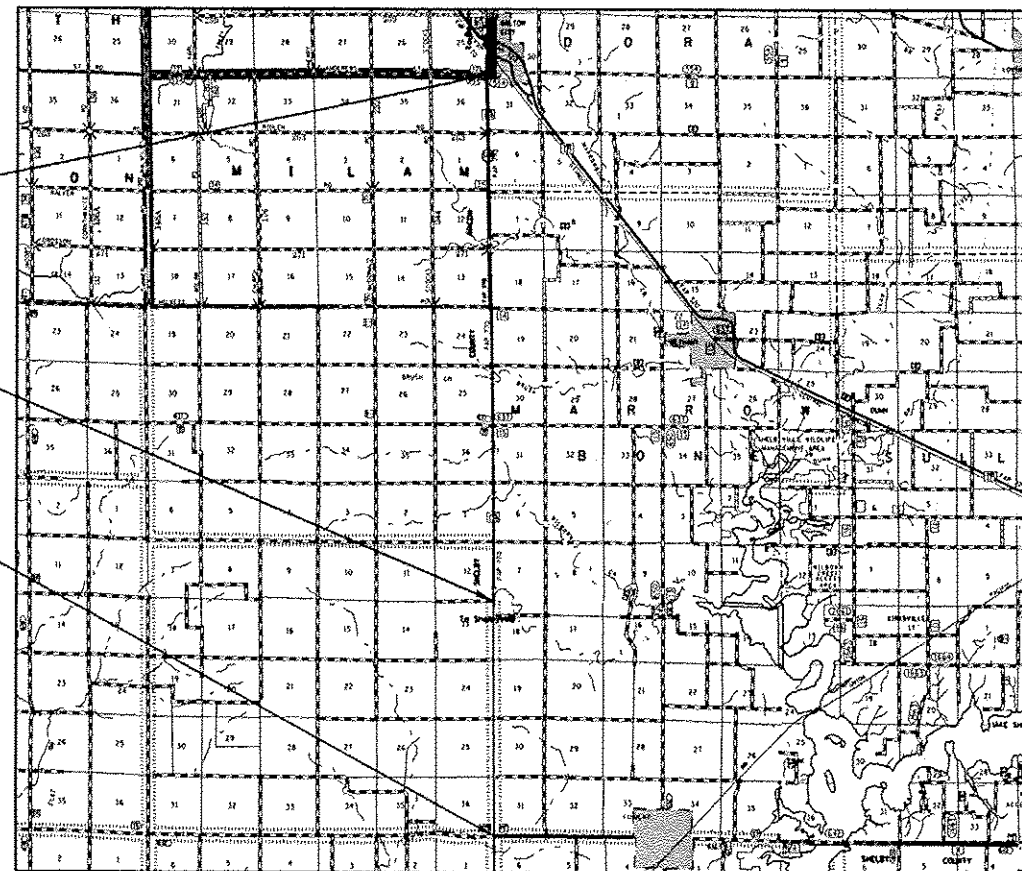
STA 633+22.98 BK = STA 633+18.57 AH
 STA 650+40.37 BK = STA 650+44.78 AH
 STA 782+81.02 BK = STA 782+95.55 AH
 STA 822+72.07 BK = STA 822+64.12 AH
 STA 842+04.98 BK = STA 842+12.93 AH

ADT (2011) = 2600

PROJECT ENDS
 LT STA 1111+21
 RT STA 1109+43

MOULTRIE/SHELBY CO.
 STA 632+79.24

PROJECT BEGINS
 STA 421+21



FULL SIZE PLANS HAVE BEEN PREPARED USING STANDARD ENGINEERING SCALES. REDUCED SIZED PLANS WILL NOT CONFORM TO STANDARD SCALES. IN MAKING MEASUREMENTS ON REDUCED PLANS, THE ABOVE SCALES MAY BE USED.

J.U.L.I.E.
 JOINT UTILITY LOCATION INFORMATION FOR EXCAVATION
 1-800-892-0123
 OR 811

PROJECT ENGINEER: MARK DAUGHERTY
 PROJECT MANAGER: BRIAN BIERMAN

CONTRACT NO. 74552

GROSS LENGTH = 68,985 FT. = 13.1 MILE
 NET LENGTH = 67,326 FT. = 12.8 MILE

STATE OF ILLINOIS
 DEPARTMENT OF TRANSPORTATION
 DIVISION OF HIGHWAYS

SUBMITTED SEPT 11 2012
Roger L. Drishell
 DEPUTY DIRECTOR OF HIGHWAYS, REGION ENGINEER

Dec 7 2012
John D. Baranowski, P.E.
 active ENGINEER OF DESIGN AND ENVIRONMENT

Dec 7 2012
William R. Freyler
 active DIRECTOR OF HIGHWAYS, CHIEF ENGINEER

PRINTED BY THE AUTHORITY
 OF THE STATE OF ILLINOIS