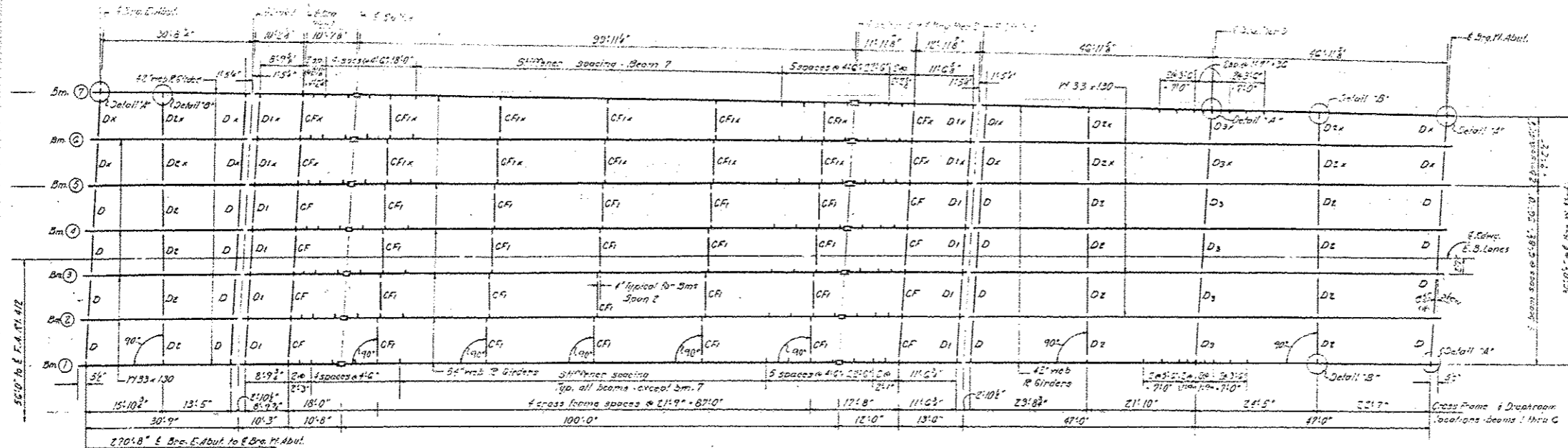
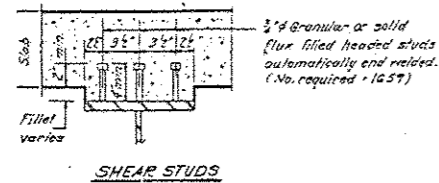


STATE OF ILLINOIS
DEPARTMENT OF TRANSPORTATION

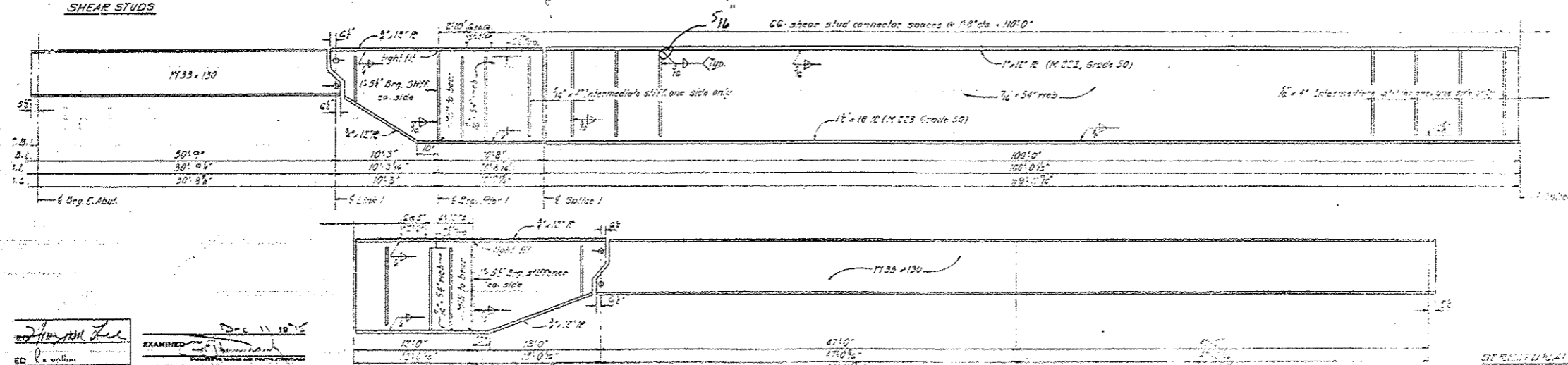
| | | | | |
|-------------|---------|------|-----------|--------------|
| PROJECT NO. | SECTION | DATE | SHEET NO. | TOTAL SHEETS |
| 58-26 | MACON | 107 | 58 | 33 SHEETS |



FRAMING PLAN - E.B. LANES



Note:
All structural steel shall be AASHTO M183 except as noted in beam elevation.
For details 'A' & 'B' see Sheet # 12



EXAMINED
PASSED
DATE: Dec 11 10 15

VARIOUS ROUTES
07 BRIDGE PAINTING 2013-2

| | | | | | | | | | | | |
|---|-------------------------------|-------------|------------|---|---------------------------|-----------------------|-----------|---------|--------------------|--------------|-----------|
| FILE NAME: | USER NAME: stoffannk | DESIGNED: - | REVISED: - | STATE OF ILLINOIS DEPARTMENT OF TRANSPORTATION | EXISTING STRUTURE PLAN | | F.A. RTE. | SECTION | COUNTY | TOTAL SHEETS | SHEET NO. |
| c:\pwwork\pwwork\stofferannk\09207287\074580-shc-plan.dgn | 74580-shc-plan.dgn | DRAWN: - | REVISED: - | | 058-0102 (E8) | | . | . | MACON | 27 | 16 |
| Default | PLOT SCALE: 100.0000 1/16 in. | CHECKED: - | REVISED: - | | SCALE: NA | SHEET 12 OF 23 SHEETS | STA. | TO STA. | CONTRACT NO. 74580 | | |
| | PLOT DATE: 10/23/2012 | DATE: - | REVISED: - | | ILLINOIS FED. AID PROJECT | | | | | | |