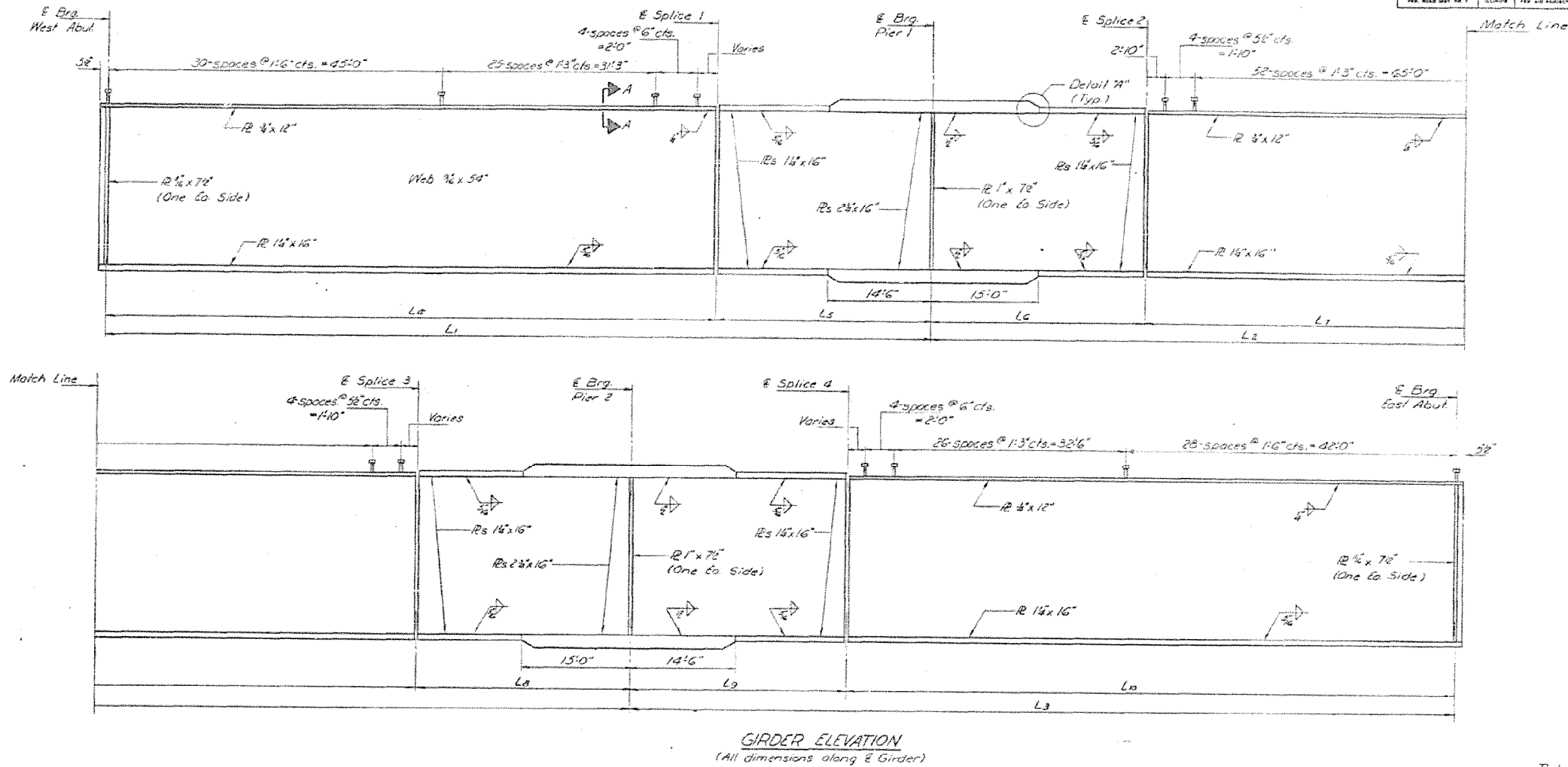
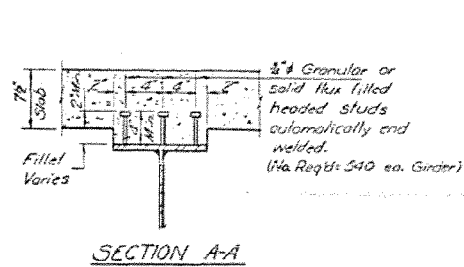


STATE OF ILLINOIS  
DEPARTMENT OF TRANSPORTATION

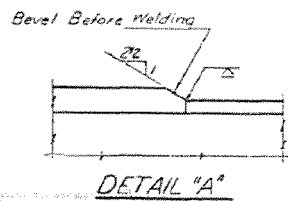
ROUTE NO.	SECTION	COUNTY	SHEET NO.	TOTAL SHEETS
58-66	50	MACON	27	33
SHEET NO. 27				



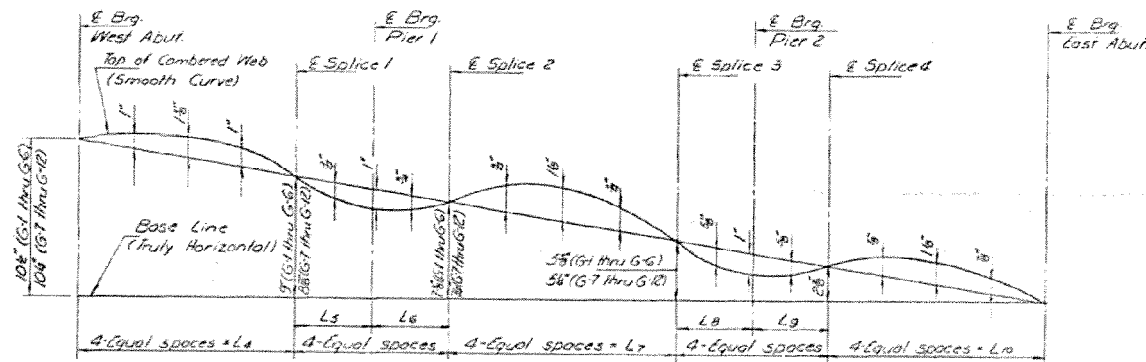
GIRDER ELEVATION  
(All dimensions along E Girder)



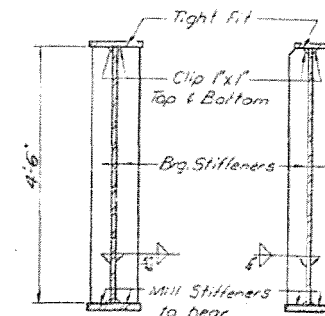
SECTION A-A



DETAIL "A"



CAMBER DIAGRAM



SECTION AT PIERS SECTION AT ABUTMENTS

STRUCTURAL STEEL  
EAST AND WEST BOUND LANES  
F.A. RT. 72 SEC. 58-66B  
MACON COUNTY  
STA. 721+12.00

Notes:  
See sheet #21 for dimensions  
L<sub>4</sub> thru L<sub>10</sub>.

DESIGNED	Stanley S. Stein	EXAMINED	Richard H. Holtzman
CHECKED	John P. Hutten	PASSED	Richard H. Holtzman
DRAWN	R. Dohy	APPROVED	Richard H. Holtzman
CHECKED	R.H.G. S.D.		

FILE NAME =	USER NAME = steffennk	DESIGNED -	REVISED -
ct:\pw_work\p\idot\stefennk\d0307287\074580-sht.pln.dgn		DRAWN -	REVISED -
Default	PLOT SCALE = 100.0000' / in.	CHECKED -	REVISED -
	PLOT DATE = 10/23/2012	DATE -	REVISED -

STATE OF ILLINOIS  
DEPARTMENT OF TRANSPORTATION

EXISTING STRUTURE PLAN

SCALE: NA SHEET 23 OF 23 SHEETS STA. TO STA.

F.A. RTE.	SECTION	COUNTY	TOTAL SHEETS	SHEET NO.
.	..	MACON	27	27
CONTRACT NO. 74580				
ILLINOIS FED. AID PROJECT				

VARIOUS ROUTES  
D7 BRIDGE PAINTING 2013-2