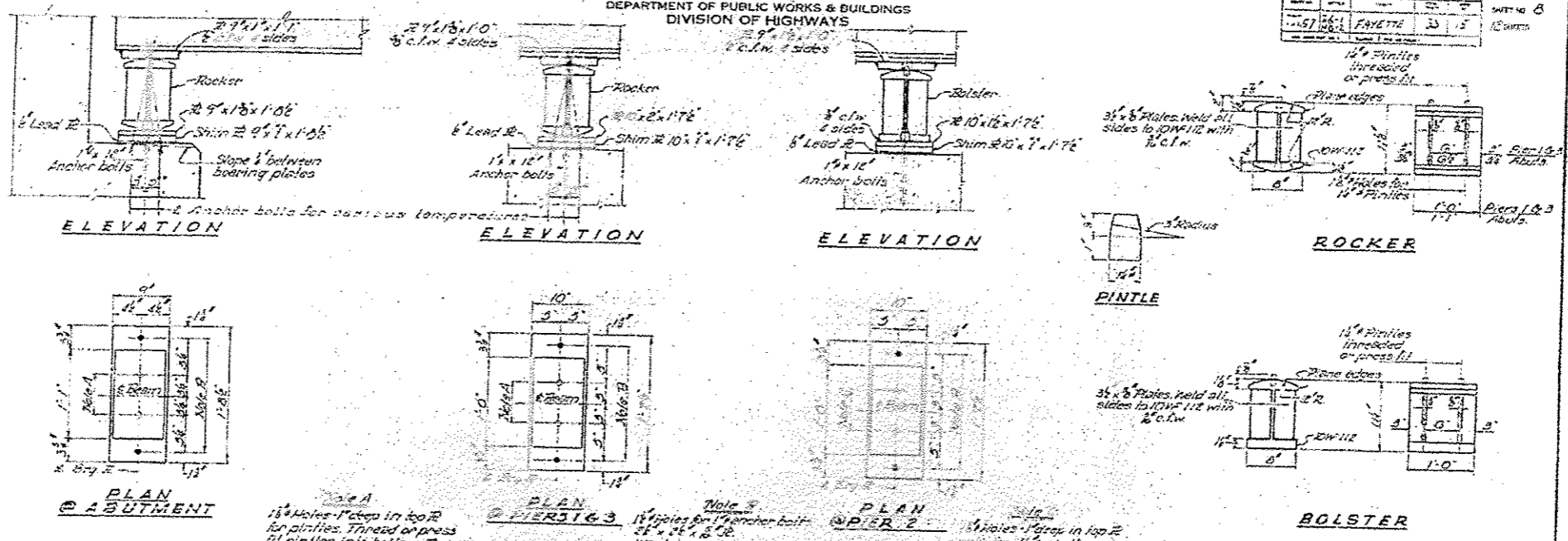


STATE OF ILLINOIS
DEPARTMENT OF PUBLIC WORKS & BUILDINGS
DIVISION OF HIGHWAYS

PROJECT NO. 74592
SECTION 57
COUNTY FAYETTE
SHEET NO. 7



NOTES ON SETTING OF ANCHOR BOLTS AT EXP BRGS.

- a) D' (Side of brg away from fixed brg)
 - $D' = 6$ per each 100' increment of expansion for every 10' fall from temp. of 50°F
- b) (Side of brg toward fixed brg)
 - $D' = 6$ per each 100' increment of expansion for every 10' rise from temp. of 50°F
- c) After beams have been erected and dimensioned, if the determined anchor bolts shall be placed in drilled holes and grouted.

BEARING ASSEMBLY DETAILS

TABLE OF MOMENTS & REACTIONS - INTERIOR BEAMS

MOMENTS	REACTIONS					
	1	2	3	4	5	6
D.L.	139	228	301	403	571	1040
L.L.	220	350	452	630	918	1614
Exp.	73	71	61	52	44	31
TOTAL	432	649	814	1085	1533	2685

COMPOSITE BEAM

TABLE OF MOMENTS & SHEARS - INTERIOR BEAMS

SECTION	MOMENT	SHEAR
1-1	139	139
2-2	228	228
3-3	301	301
4-4	403	403
5-5	571	571
6-6	1040	1040

TABLE OF DIMENSIONS

SECTION	1	2	3	4	5
1-1	10	10	10	10	10
2-2	10	10	10	10	10
3-3	10	10	10	10	10
4-4	10	10	10	10	10
5-5	10	10	10	10	10
6-6	10	10	10	10	10

DESIGNED BY: [Signature]
DRAWN BY: [Signature]
CHECKED BY: [Signature]
DATE: 10/23/2012

BEARING DETAILS
I.R.T. 7-SEC. 57
FAYETTE COUNTY
STA. 30451+00