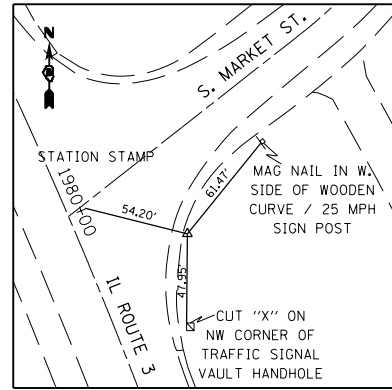
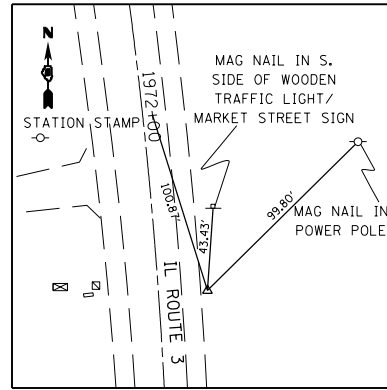


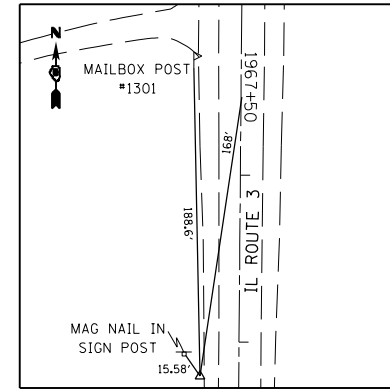
CP 17
IRON PIN W/ CAP
600,682.0460 N
2,301,785.3150 E



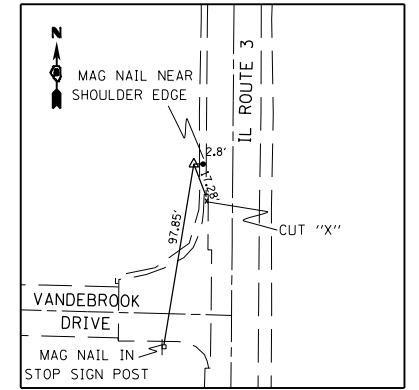
CP 118
IRON PIN W/ CAP
599,669.5360 N
2,302,582.6320 E



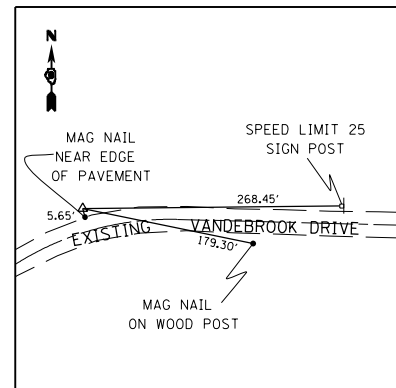
CP 19
IRON PIN W/ CAP
598,856.7910 N
2,302,745.0660 E



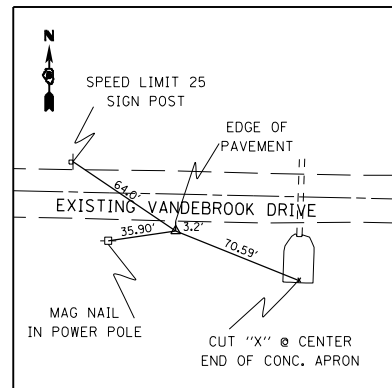
CP 20
IRON PIN W/ CAP
598,288.2129 N
2,302,703.6141 E



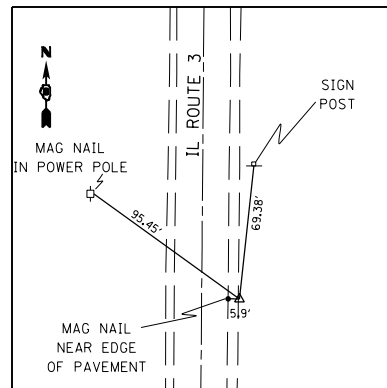
CP 21
IRON PIN W/ CAP
597,582.9611 N
2,302,701.1378 E



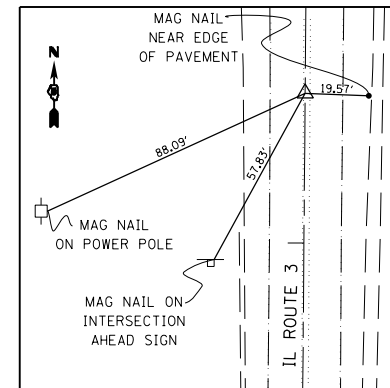
CP 22
IRON PIN W/ CAP
597,517.1653 N
2,302,312.6306 E



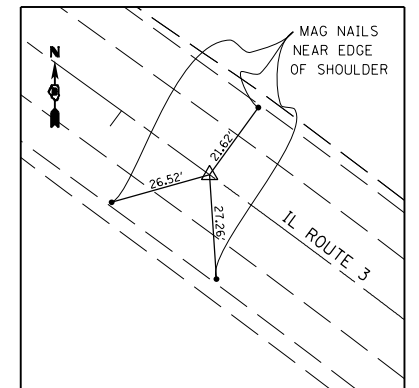
CP 23
IRON PIN W/ CAP
597,334.1247 N
2,301,815.5261 E



CP 30
IRON PIN W/ CAP
596,642.0706 N
2,302,729.8504 E



IL ROUTE 3
END PROJECT 1966+46.00
SET MAG NAIL IN HMA PAVEMENT
598,351.984 N
2,302,723.922 E



IL ROUTE 3
PT STA 1993+71.63
SET DIMPLE IN BRASS MONUMENT
600,736.8406 N
2,301,674.9708 E

LAST SAVED = 10/3/2012
PEN TABLE = 100.0000
PLOT DRIVER = pdfplotlayers.plt

FILE NAME =	USER NAME = jepettibone	DESIGNED -	REVISED -
I:\1001100\Phase II - 76FS\Cad\T\Plans\08_0876F51-sht-ATB-3.dgn		DRAWN -	REVISED -
	PLOT SCALE = 100.0000' / 1"	CHECKED -	REVISED -
	PLOT DATE = 10/4/2012 5:10:28 PM	DATE -	REVISED -

STATE OF ILLINOIS
DEPARTMENT OF TRANSPORTATION

HORNER &
SHIRIN, INC.
ENGINEERS

ALIGNMENTS, TIES, AND BENCHMARKS

SCALE: NONE SHEET NO. 3 OF 6 SHEETS STA. TO STA.

F.A.U. RTE.	SECTION	COUNTY	TOTAL SHEETS	SHEET NO.
9324	68-R-1	MONROE	192	32
CONTRACT NO. 76F51				
ILLINOIS FED. AID PROJECT				