

SEE LEGENDS, TOPOGRAPHIC STATEMENT, SURVEYORS NOTE(S) AND BASIS OF COORDINATES & BEARINGS STATEMENT ON SHEET 2
SEE COORDINATE TABLES ON SHEET 2 FOR I.D.O.T. PROVIDED CONTROL AND ALIGNMENTS.

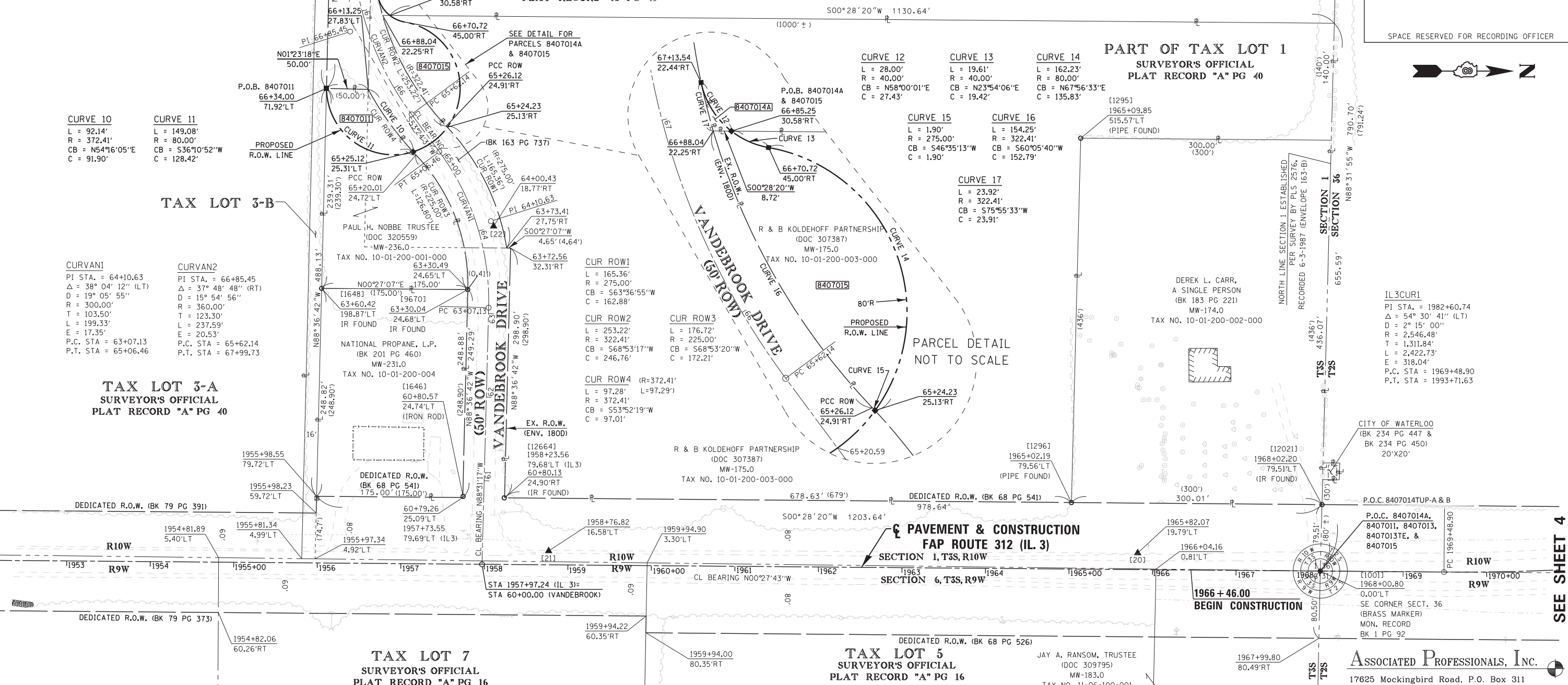
SEE SHEET 7

PAUL H. NOBBE TRUSTEE OF THE NOBBE BROTHERS LAND TRUST NO. 1, UNDER AGREEMENT DATED DEC. 31, 2007, KNOWN AS THE NOBBE BROTHERS LAND TRUST NO. 1 (DOC 320559)
MW-236.0
TAX NO. 10-01-200-001-000

PART OF TAX LOT 1
SURVEYOR'S OFFICIAL
PLAT RECORD "A" PG 40

PART OF TAX LOT 1
SURVEYOR'S OFFICIAL
PLAT RECORD "A" PG 40

SPACE RESERVED FOR RECORDING OFFICER



CURVE 10
L = 92.14'
R = 372.41'
CB = N54°16'05"E
C = 91.90'

CURVE 11
L = 149.08'
R = 80.00'
CB = S36°10'52"W
C = 128.42'

CURVANI
PI STA. = 64+10.63
Δ = 38° 04' 12" (LT)
D = 19° 05' 55"
R = 300.00'
T = 103.50'
L = 199.33'
E = 17.35'
P.C. STA = 63+07.13
P.T. STA = 65+06.46

CURVAN2
PI STA. = 66+85.45
Δ = 37° 48' 48" (RT)
D = 15° 54' 56"
R = 360.00'
T = 123.30'
L = 237.59'
E = 20.53'
P.C. STA = 65+62.14
P.T. STA = 67+99.73

TAX LOT 3-A
SURVEYOR'S OFFICIAL
PLAT RECORD "A" PG 40

TAX LOT 3-B

TAX LOT 7
SURVEYOR'S OFFICIAL
PLAT RECORD "A" PG 16

TAX LOT 5
SURVEYOR'S OFFICIAL
PLAT RECORD "A" PG 16

TAX LOT 4
SURVEYOR'S OFFICIAL
PLAT RECORD "A" PG 16

* SEE TOTAL HOLDING AREA SOURCE TABLE ON SHEET 2

| PARCEL NO. | OWNER | TOTAL HOLDING ACRES | EASEMENTS | | | PERMANENT TAX NUMBER | PROPERTY ACQUIRED BY | | | |
|------------|--|---------------------|--------------------------------------|------------------------------------|-----------------|--|---------------------------------------|----------------------------------|-----------------------|--|
| | | | FEE SIMPLE ACQUISITION ACRES | SO. FT. | REMAINDER ACRES | | | | | |
| 8407011 | PAUL H. NOBBE, TRUSTEE TITLE REPORT NO. MW-236.0 | 0.7074 | 0.1046 | 4,556 | 0.6028 | 10-01-200-001-000(PT) | | | | |
| 8407014 | PAUL H. NOBBE, TRUSTEE TITLE REPORT NO. MW-236.0 | 33.3227 | A 0.0013 B 4.9794 TOTAL 4.9807 | A 59 B 216,902 TOTAL 216,961 | 28.3420 | TUP-A 0.0115 TUP-B 0.0115 TOTAL 0.0230 | TUP-A 500 TUP-B 500 TOTAL 1,000 | TUP-A&B ENTRANCE CONSTRUCTION | 10-01-200-001-000(PT) | |
| 8407015 | R & B KOLDEHOFF PARTNERSHIP TITLE REPORT NO. MW-175.0 | 10.0000 | 0.1394 | 6,071 | 9.8606 | | | | 10-01-200-003-000 | |

SHEET 5 COORDINATE TABLE

| PNT # (DESCRIPTION) | STATION | OFFSET | NORTH | EAST |
|---------------------|------------|-----------|--------------|----------------|
| [1001] PLUG FOUND | 1968+00.00 | 0.00' | 598,506.7791 | 2,302,725.1669 |
| EX. ROW | 1972+26.11 | 76.10'RT | 598,939.3025 | 2,302,789.2313 |
| EX. ROW | 1972+24.01 | 95.98'RT | 598,939.1377 | 2,302,809.2300 |
| EX. ROW | 1967+99.80 | 80.49'RT | 598,505.1274 | 2,302,805.6536 |
| [12021] IR FOUND | 1968+02.20 | 79.51'LT | 598,508.8161 | 2,302,645.6785 |
| [1296] PIPE FOUND | 1965+02.19 | 79.56'LT | 598,208.8156 | 2,302,643.2064 |
| EX. ROW | 1959+94.22 | 60.35'RT | 597,699.7367 | 2,302,779.0161 |
| EX. ROW | 1959+94.00 | 80.35'RT | 597,699.3617 | 2,302,799.0137 |
| [12664] IR FOUND | 60+80.13 | 24.90'RT | 597,530.2099 | 2,302,637.6147 |
| EX. ROW | 60+79.26 | 25.09'LT | 597,480.2052 | 2,302,637.2023 |
| [1646] IR FOUND | 60+80.57 | 24.74'LT | 597,480.5930 | 2,302,635.9000 |
| EX. ROW | 1955+98.55 | 79.72'LT | 597,305.2122 | 2,302,635.7603 |
| [1295] PIPE FOUND | 1965+09.85 | 515.57'LT | 598,219.9951 | 2,302,207.2759 |
| [1648] IR FOUND | 63+60.42 | 198.87'LT | 597,311.2411 | 2,302,387.0149 |
| [9670] IR FOUND | 63+30.04 | 24.68'LT | 597,486.2357 | 2,302,388.3951 |
| EX. ROW | 63+30.49 | 24.65'LT | 597,486.2451 | 2,302,387.9852 |
| EX. ROW | 63+72.56 | 32.31'RT | 597,537.4525 | 2,302,338.7975 |
| EX. ROW | 63+73.41 | 27.75'RT | 597,532.8052 | 2,302,338.7609 |
| PR. ROW/EX. ROW | 66+34.00 | 71.92'LT | 597,317.0378 | 2,302,147.7718 |
| PR. ROW/EX. ROW | 65+25.12 | 25.31'LT | 597,420.6971 | 2,302,223.5873 |
| PR. ROW/EX. ROW | 65+24.23 | 25.13'RT | 597,461.7280 | 2,302,194.2292 |
| PR. ROW | 66+70.72 | 45.00'RT | 597,410.7240 | 2,302,068.3464 |
| PR. ROW | 66+85.25 | 30.58'RT | 597,392.9678 | 2,302,060.4773 |
| PR. ROW/EX. ROW | 67+13.54 | 22.44'RT | 597,378.4346 | 2,302,037.2184 |

STATE OF ILLINOIS)
) SS
COUNTY OF WASHINGTON)

I, GARY S. MUELLER, AN ILLINOIS PROFESSIONAL LAND SURVEYOR, CERTIFY THAT I HAVE SURVEYED THE PLAT OF HIGHWAY SHOWN HEREON AND THAT THIS PROFESSIONAL SERVICE CONFORMS TO THE CURRENT ILLINOIS MINIMUM STANDARDS FOR A BOUNDARY SURVEY FOR THE PROPOSED PARCEL(S) TO BE ACQUIRED BY THE STATE OF ILLINOIS, DEPARTMENT OF TRANSPORTATION, SHOWN HEREON.

DATED 9/28/2012

GARY S. MUELLER, PLS NO. 3332
LICENSE EXPIRATION DATE: 11/30/2012

ASSOCIATED PROFESSIONALS, INC.
17625 Mockingbird Road, P.O. Box 311
Nashville, Illinois 62263
Ph. 618-478-9000 Fax 618-478-9001
web: www.apisurvey.com
IDPR Design Firm License No. 184-001303

ILLINOIS DEPARTMENT OF TRANSPORTATION
PLAT OF HIGHWAYS
FAP ROUTE 312 (IL 3)
FAU ROUTE 9324
(RELOCATED VANDEBROOK DRIVE)
SECTION 68-R-1
MONROE COUNTY
JOB NO. R-98-007-04
STATION 1953+00 TO STATION 1968+00

60' 0 60' 120'
SCALE: 1" = 60'

ILLINOIS DEPARTMENT OF TRANSPORTATION
DIVISION OF HIGHWAYS/REGION 5/DISTRICT 8
1102 EASTPORT PLAZA DRIVE
COLLINGSVILLE, ILLINOIS 62234-6198

| F.A.U. RTE. | SECTION | COUNTY | TOTAL SHEETS | SHEET NO. |
|-------------|---------|--------|--------------|-----------|
| 9324 | 68-R-1 | MONROE | 192 | 40 |

COMPLETION DATE OF FIELD WORK PERFORMED
LAND SURVEY: 9/23/2011 ROW STAKING:

FED. ROAD DIST. NO. 8 ILLINOIS FED. AID PROJECT