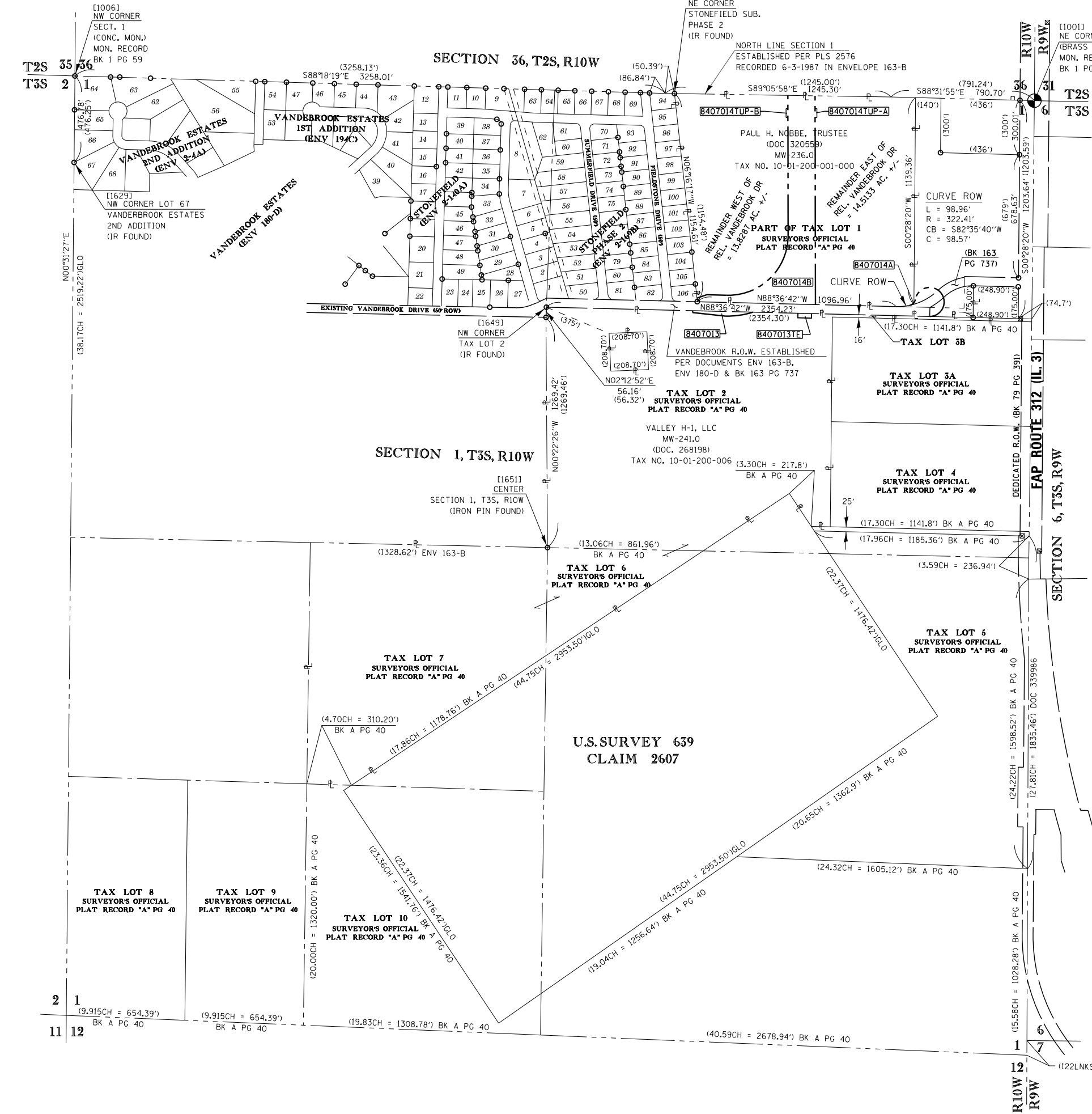


SEE LEGENDS, TOPOGRAPHIC STATEMENT, SURVEYORS NOTE(S) AND BASIS OF COORDINATES & BEARINGS STATEMENT ON SHEET 2



SPACE RESERVED FOR RECORDING OFFICER

# TOTAL HOLDING SKETCH PARCELS 8407013 & 8407014



SHEET 5 COORDINATE TABLE				
PNT # (DESCRIPTION)	STATION	OFFSET	NORTH	EAST
[1001] PLUG FOUND NE CORNER SECT. 1	1968+00.00	0.00'	598,506.7791	2,302,725.1669
[1283] IR FOUND NE CORN. STONEFIELD SUB. PHASE 2			598,545.8171	2,300,739.8910
[1006] CONC. MON. FOUND NE CORNER SECTION 1			598,642.9611	2,297,432.9900
[1629] IR FOUND NW CORNER LOT 67 VANDERBROOK ESTATES 2ND ADDITION			598,166.2043	2,297,428.6283
[1649] IR FOUND NW CORNER TAX LOT 2 OF SECT. 1			597,368.2851	2,300,033.4720
[1651] IR FOUND CENTER OF SECTION 1			596,042.7720	2,300,039.5850

SEE COORDINATE TABLES ON SHEET 2 FOR I.D.O.T. PROVIDED CONTROL AND ALIGNMENTS.

**ASSOCIATED PROFESSIONALS, INC.**  
 17625 Mockingbird Road, P.O. Box 311  
 Nashville, Illinois 62263  
 Ph. 618-478-9000 Fax 618-478-9001  
 web: www.apisurvey.com  
 IDPR Design Firm License No. 184-001303

ILLINOIS DEPARTMENT OF TRANSPORTATION  
**PLAT OF HIGHWAYS**  
 FAP ROUTE 312 (IL 3)  
 FAU ROUTE 9324  
 (RELOCATED VANDEBROOK DRIVE)  
 SECTION 68-R-1  
 MONROE COUNTY  
 JOB NO. R-98-007-04  
 TOTAL HOLDING PARCELS 8407013 & 8407014

9/28/2012

GARY S. MUELLER, IPLS # 3332  
 EXPIRATION DATE: 11-30-2012

300' 0 300' 600'  
 SCALE: 1" = 300' SHEET 9 OF 12

ILLINOIS DEPARTMENT OF TRANSPORTATION  
 DIVISION OF HIGHWAYS/REGION 5/DISTRICT 8  
 1102 EASTPORT PLAZA DRIVE  
 COLLINGSVILLE, ILLINOIS 62234-6198

F.A.U. RTE.	SECTION	COUNTY	TOTAL SHEETS	SHEET NO.
9324	68-R-1	MONROE	192	44

CONTRACT NO. 76F51

FED. ROAD DIST. NO. 8 ILLINOIS FED. AID PROJECT

