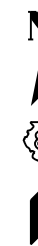
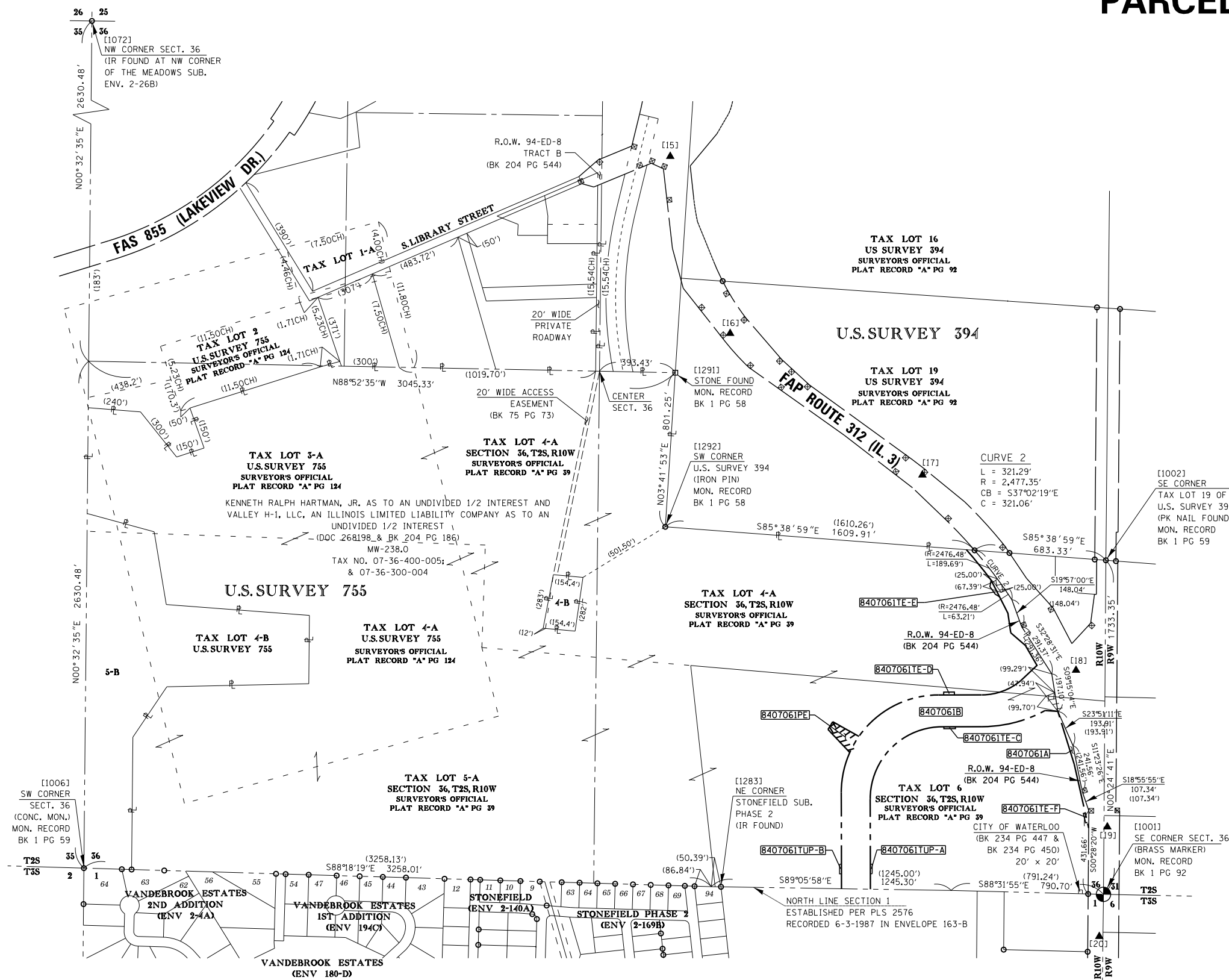


SEE LEGENDS, TOPOGRAPHIC STATEMENT, SURVEYORS NOTE(S) AND BASIS OF COORDINATES & BEARINGS STATEMENT ON SHEET 2

TOTAL HOLDING SKETCH PARCEL 8407061



SPACE RESERVED FOR RECORDING OFFICER

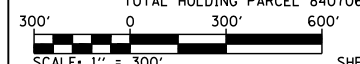


SHEET 10 COORDINATE TABLE				
PNT # (DESCRIPTION)	STATION	OFFSET	NORTH	EAST
[1001] PLUG FOUND SE CORNER SECT. 36	1968+00.00	0.00'	598,506.7791	2,302,725.1669
[1002] PK NAIL FOUND SE CORN. TAX LOT 19 U.S. SURVEY 394	634+26.99	2.33'LT	600,240.0829	2,302,737.6160
[1291] STONE FOUND	2004+99.60	373.62'LT	601,213.6150	2,300,502.5930
[1292] IR FOUND SW CORNER U.S. SURVEY 394			600,414.0325	2,300,450.9856
[1283] IR FOUND NE CORN. STONEFIELD SUB. PHASE 2			598,545.8171	2,300,739.8910
[1006] CONC. MON. FOUND SW CORNER SECTION 36			598,642.9611	2,297,432.9900
[1072] IR FOUND NW CORNER SECTION 36			603,903.6891	2,297,482.8480

SEE COORDINATE TABLES ON SHEET 2 FOR I.D.O.T. PROVIDED CONTROL AND ALIGNMENTS.

ASSOCIATED PROFESSIONALS, INC.
 17625 Mockingbird Road, P.O. Box 311
 Nashville, Illinois 62263
 Ph. 618-478-9000 Fax 618-478-9001
 web: www.apisurvey.com
 IDPR Design Firm License No. 184-001303

ILLINOIS DEPARTMENT OF TRANSPORTATION
PLAT OF HIGHWAYS
 FAP ROUTE 312 (IL 3)
 FAU ROUTE 9324
 (RELOCATED VANDEBROOK DRIVE)
 SECTION 68-R-1
 MONROE COUNTY
 JOB NO. R-98-007-04
 TOTAL HOLDING PARCEL 8407061



SHEET 11 OF 12

9/28/2012

GARY S. MUELLER, IPLS # 3332 EXPIRATION DATE: 11-30-2012			
COMPLETION DATE OF FIELD WORK PERFORMED			
LAND SURVEY: 9/23/2011	ROW STAKING:	F.A.U. RTE. 9324	SHEET NO. 46
		COUNTY MONROE	TOTAL SHEETS 192
		CONTRACT NO. 76F51	