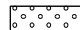

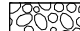

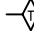


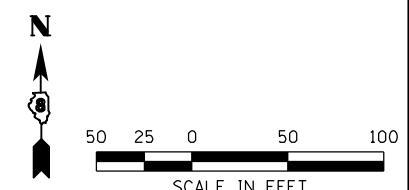
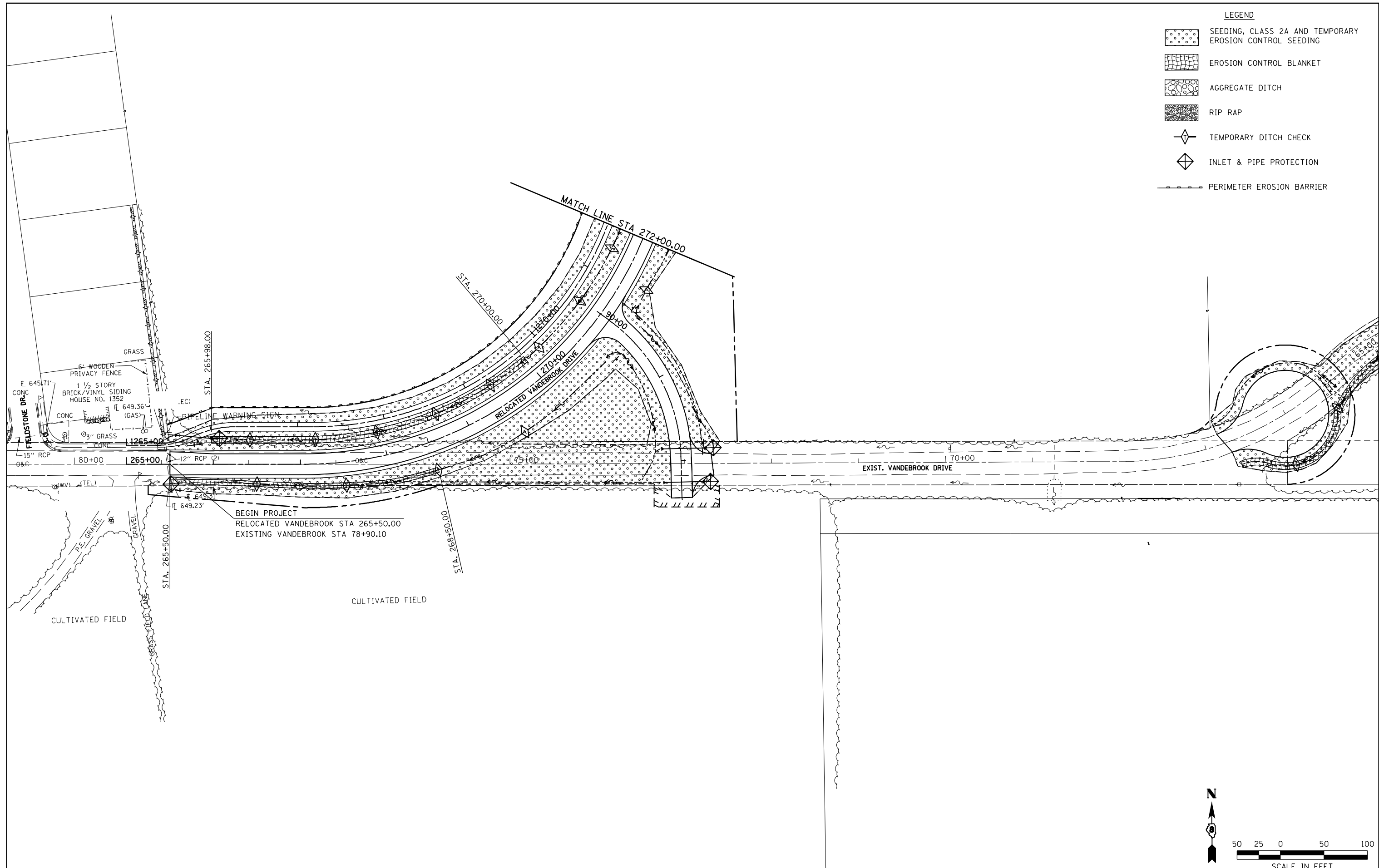


LEGEND

	SEEDING, CLASS 2A AND TEMPORARY EROSION CONTROL SEEDING
	EROSION CONTROL BLANKET
	AGGREGATE DITCH
	RIP RAP
	TEMPORARY DITCH CHECK
	INLET & PIPE PROTECTION
	PERIMETER EROSION BARRIER



FILE NAME =	USER NAME = Richard Heinke	DESIGNED - JAH	REVISED -
F:\Projects\DOT PROJECTS\09-101-11.4\Drawings\CADD Sheets\Contract 1\41.D878F51-sht-01.dwg	DRAWN - RNH	REVISIONS -	REVISIONS -
PLOT SCALE = 100.0000' / in.	CHECKED - TMM	REVISIONS -	REVISIONS -
PLOT DATE = 10/2/2012	DATE -	REVISIONS -	REVISIONS -

**STATE OF ILLINOIS
DEPARTMENT OF TRANSPORTATION**

McDonough-Whillow, P.C.
PROFESSIONAL DESIGN NO. 184-002750
SCALE: 1"=50'

EROSION CONTROL PLAN
RELOCATED VANDEBROOK DR.
SHEET NO. 1 OF 8 SHEETS STA. 265+37.54 TO STA. 272+00.00

F.A.U. RTE.	SECTION	COUNTY	TOTAL SHEETS	SHEET NO.
9324	68-R-1	MONROE	192	70
CONTRACT NO. 76F51				
ILLINOIS FED. AID PROJECT				