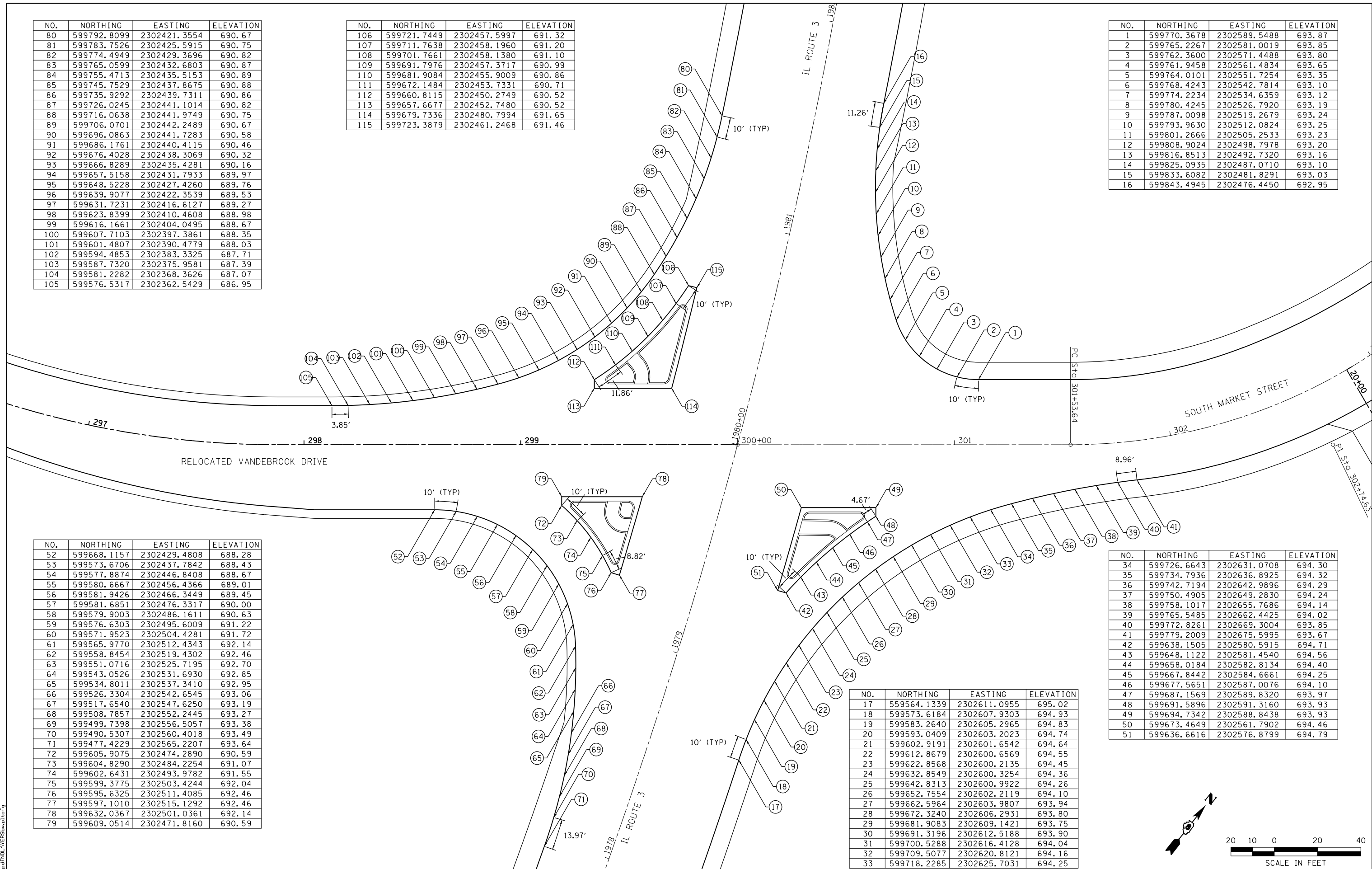


NO.	NORTHING	EASTING	ELEVATION
80	599792.8099	2302421.3554	690.67
81	599783.7526	2302425.5915	690.75
82	599774.4949	2302429.3696	690.82
83	599765.0599	2302432.6803	690.87
84	599755.4713	2302435.5153	690.89
85	599745.7529	2302437.8675	690.88
86	599735.9292	2302439.7311	690.86
87	599726.0245	2302441.1014	690.82
88	599716.0638	2302441.9749	690.75
89	599706.0701	2302442.2489	690.67
90	599696.0863	2302441.7283	690.58
91	599686.1761	2302440.4115	690.46
92	599676.4028	2302438.3069	690.32
93	599666.8289	2302435.4281	690.16
94	599657.5158	2302431.7933	689.97
95	599648.5228	2302427.4260	689.76
96	599639.9077	2302422.3539	689.53
97	599631.7231	2302416.6127	689.27
98	599623.8399	2302410.4608	688.98
99	599616.1661	2302404.0495	688.67
100	599607.7103	2302397.3861	688.35
101	599601.4807	2302390.4779	688.03
102	599594.4853	2302383.3325	687.71
103	599587.7320	2302375.9581	687.39
104	599581.2282	2302368.3626	687.07
105	599576.5317	2302362.5429	686.95

NO.	NORTHING	EASTING	ELEVATION
106	599721.7449	2302457.5997	691.32
107	599711.7638	2302458.1960	691.20
108	599701.7661	2302458.1380	691.10
109	599691.7976	2302457.3717	690.99
110	599681.9084	2302455.9009	690.86
111	599672.1484	2302453.7331	690.71
112	599660.8115	2302450.2749	690.52
113	599657.6677	2302452.7480	690.52
114	599679.7336	2302480.7994	691.65
115	599723.3879	2302461.2468	691.46

NO.	NORTHING	EASTING	ELEVATION
1	599770.3678	2302589.5488	693.87
2	599765.2267	2302581.0019	693.85
3	599762.3600	2302571.4488	693.80
4	599761.9458	2302561.4834	693.65
5	599764.0101	2302551.7254	693.35
6	599768.4243	2302542.7814	693.10
7	599774.2234	2302534.6359	693.12
8	599780.4245	2302526.7920	693.19
9	599787.0098	2302519.2679	693.24
10	599793.9630	2302512.0824	693.25
11	599801.2666	2302505.2533	693.23
12	599808.9024	2302498.7978	693.20
13	599816.8513	2302492.7320	693.16
14	599825.0935	2302487.0710	693.10
15	599833.6082	2302481.8291	693.03
16	599843.4945	2302476.4450	692.95



NO.	NORTHING	EASTING	ELEVATION
52	599668.1157	2302429.4808	688.28
53	599573.6706	2302437.7842	688.43
54	599577.8874	2302446.8408	688.67
55	599580.6667	2302456.4366	689.01
56	599581.9426	2302466.3449	689.45
57	599581.6851	2302476.3317	690.00
58	599579.9003	2302486.1611	690.63
59	599576.6303	2302495.6009	691.22
60	599571.9523	2302504.4281	691.72
61	599565.9770	2302512.4343	692.14
62	599558.8454	2302519.4302	692.46
63	599551.0716	2302525.7195	692.70
64	599543.0526	2302531.6930	692.85
65	599534.8011	2302537.3410	692.95
66	599526.3304	2302542.6545	693.06
67	599517.6540	2302547.6250	693.19
68	599508.7857	2302552.2445	693.27
69	599499.7398	2302556.5057	693.38
70	599490.5307	2302560.4018	693.49
71	599477.4229	2302565.2207	693.64
72	599605.9075	2302474.2890	690.59
73	599604.8290	2302484.2254	691.07
74	599602.6431	2302493.9782	691.55
75	599599.3775	2302503.4244	692.04
76	599595.6325	2302511.4085	692.46
77	599597.1010	2302515.1292	692.46
78	599632.0367	2302501.0361	692.14
79	599609.0514	2302471.8160	690.59

NO.	NORTHING	EASTING	ELEVATION
17	599564.1339	2302611.0955	695.02
18	599573.6184	2302607.9303	694.93
19	599583.2640	2302605.2965	694.83
20	599593.0409	2302603.2023	694.74
21	599602.9191	2302601.6542	694.64
22	599612.8679	2302600.6569	694.55
23	599622.8568	2302600.2135	694.45
24	599632.8549	2302600.3254	694.36
25	599642.8313	2302600.9922	694.26
26	599652.7554	2302602.2119	694.10
27	599662.5964	2302603.9807	693.94
28	599672.3240	2302606.2931	693.80
29	599681.9083	2302609.1421	693.75
30	599691.3196	2302612.5188	693.90
31	599700.5288	2302616.4128	694.04
32	599709.5077	2302620.8121	694.16
33	599718.2285	2302625.7031	694.25

NO.	NORTHING	EASTING	ELEVATION
34	599726.6643	2302631.0708	694.30
35	599734.7936	2302636.8925	694.32
36	599742.7194	2302642.9896	694.29
37	599750.4905	2302649.2830	694.24
38	599758.1017	2302655.7686	694.14
39	599765.5485	2302662.4425	694.02
40	599772.8261	2302669.3004	693.85
41	599779.2009	2302675.5995	693.67
42	599638.1505	2302580.5915	694.71
43	599648.1122	2302581.4540	694.56
44	599658.0184	2302582.8134	694.40
45	599667.8442	2302584.6661	694.25
46	599677.5651	2302587.0076	694.10
47	599687.1569	2302589.8320	693.97
48	599691.5896	2302591.3160	693.93
49	599694.7342	2302588.8438	693.93
50	599673.4649	2302561.7902	694.46
51	599636.6616	2302576.8799	694.79

LAST SAVED = 10/3/2012
 PEN TABLE = 10-24-14-14
 PLOT DRIVER = pdfplotlayers.batcf3

FILE NAME =	USER NAME = jepettibone	DESIGNED -	REVISED -
I:\1001100\Phase II - 76FS\Cad\T\Plans\72_0876F51-sht-intersec-02.dgn		DRAWN -	REVISED -
		CHECKED -	REVISED -
PLOT DATE = 10/4/2012 5:11:06 PM		DATE -	REVISED -

**STATE OF ILLINOIS
DEPARTMENT OF TRANSPORTATION**



INTERSECTION DETAILS
 RELOCATED VANDEBROOK DR / S MARKET ST & IL ROUTE 3

SCALE: 1" = 20' SHEET NO. 2 OF 2 SHEETS STA. TO STA.

F.A.U. RT.:	SECTION:	COUNTY:	TOTAL SHEETS:	SHEET NO.:
9324	68-R-1	MONROE	192	86
CONTRACT NO. 76F51			ILLINOIS FED. AID PROJECT	