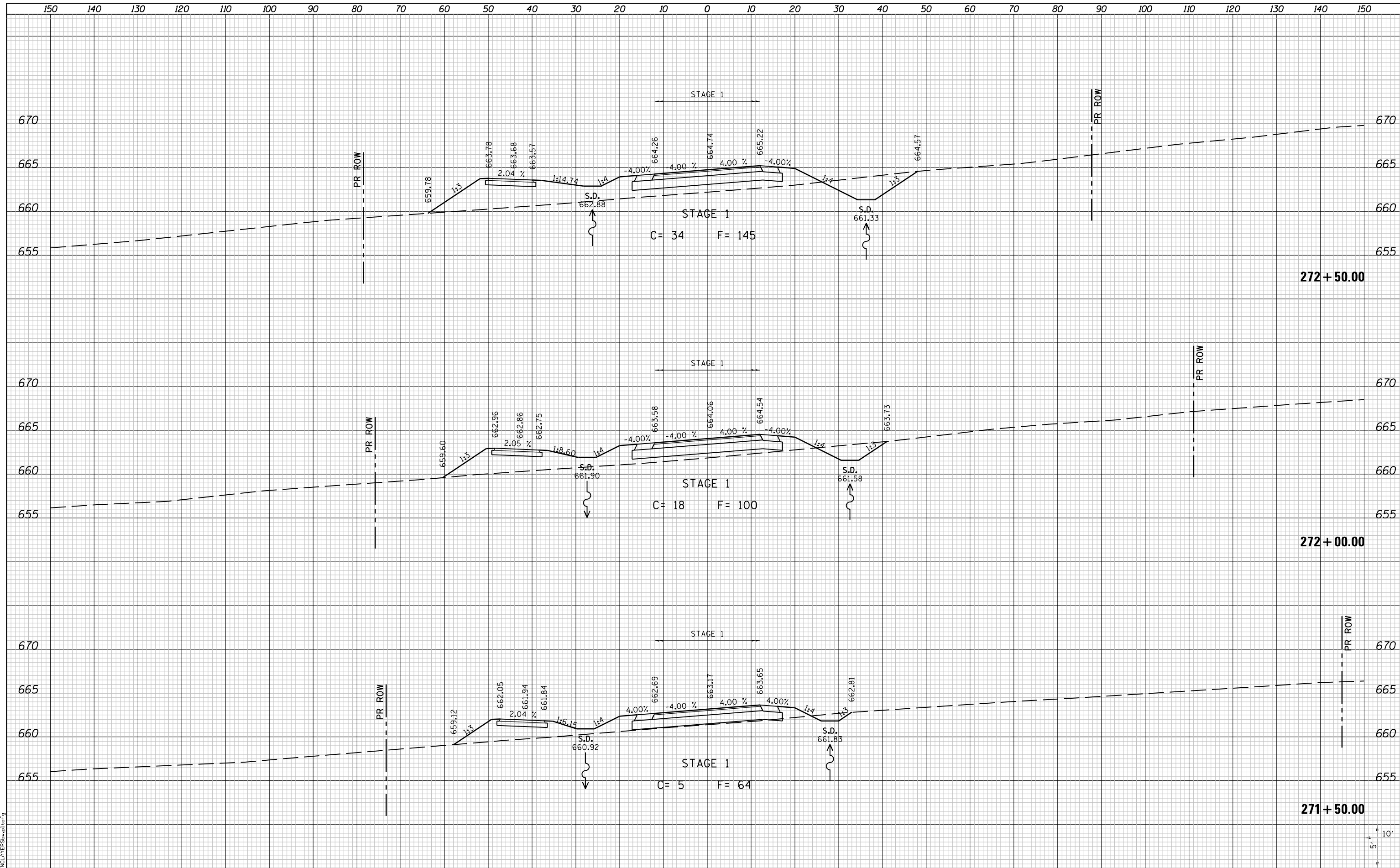


DATE	
BY	
FINAL SURVEY	
SURVEYED	
PLOTTED	
TEMPLATE	
AREAS	
CHECKED	
NO.	

DATE	
BY	
ORIGINAL SURVEY	
SURVEYED	
PLOTTED	
TEMPLATE	
AREAS	
CHECKED	
NO.	



LAST SAVED = 10/3/2012
 PEN TABLE = 181-Half.tbl
 PLOT DRIVER = PdfPlotterSpw.bat

FILE NAME = I:\10011001\Phase II - 76F51\Cad\T\Plans\100_0876F51-sht-Relocated_Vandebrook_Dr-xssht.dgn	USER NAME = jepettibone	DESIGNED -	REVISIED -
PLOT SCALE = 20.0000' / in.	PLOT DATE = 10/4/2012 5:11:41 PM	DRAWN -	REVISIED -
		CHECKED -	REVISIED -
		DATE -	REVISIED -

**STATE OF ILLINOIS
DEPARTMENT OF TRANSPORTATION**



CROSS SECTIONS
 RELOCATED VANDEBROOK DRIVE

SCALE: 10H:5V SHEET NO. 6 OF 31 SHEETS STA. 271+50.00 TO STA. 272+50.00

F.A.U. RTE.	SECTION	COUNTY	TOTAL SHEETS	SHEET NO.
9324	68-R-1	MONROE	192	115
CONTRACT NO. 76F51			ILLINOIS FED. AID PROJECT	