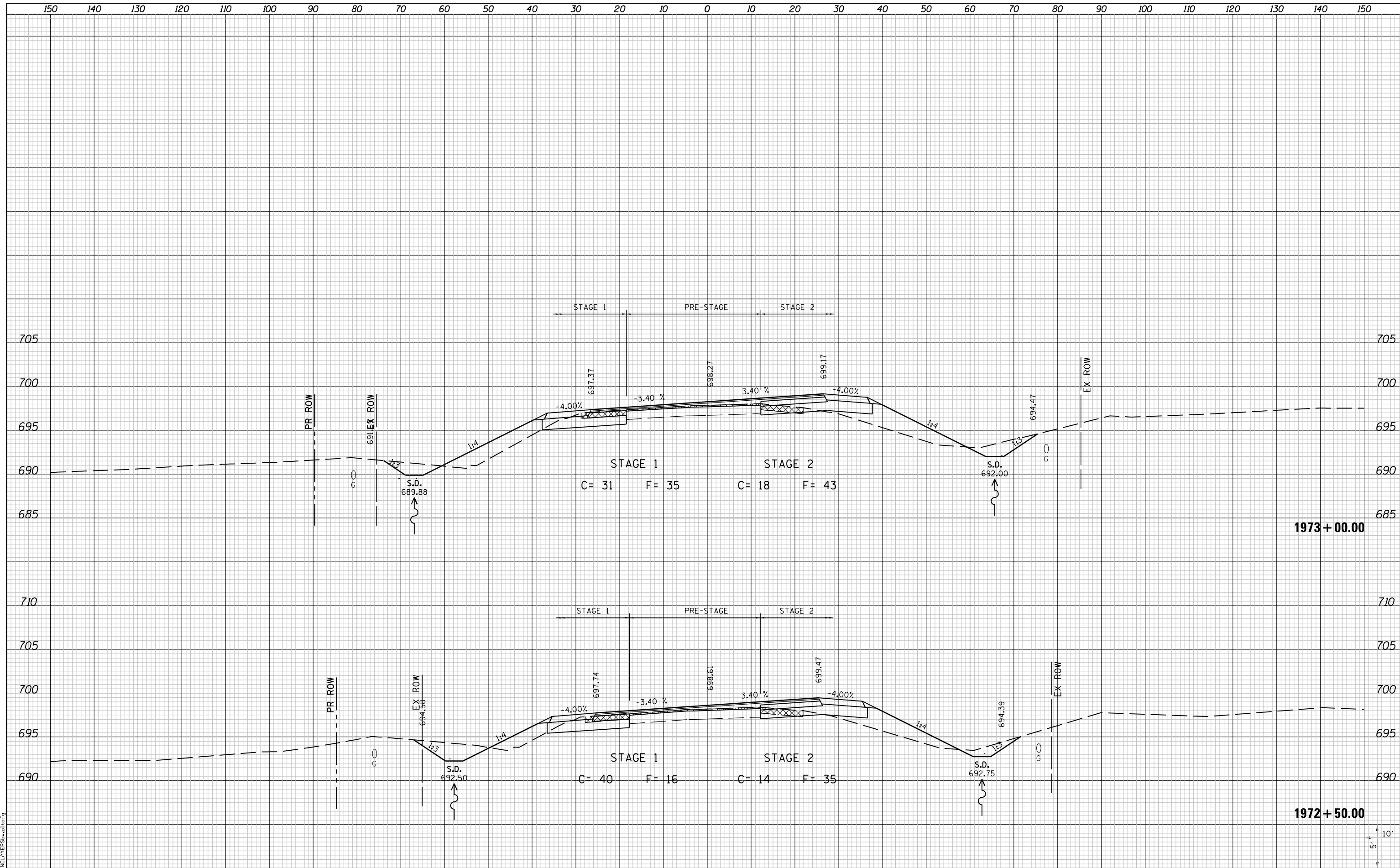


DATE	
BY	
FINAL SURVEY	
PLOTTED	
TEMPLATE	
NOTE BOOK	
AREAS CHECKED	
NO.	

DATE	
BY	
ORIGINAL SURVEY	
PLOTTED	
TEMPLATE	
NOTE BOOK	
AREAS CHECKED	
NO.	



LAST SAVED = 10/4/2012  
 PEN TABLE = 181-hat.rdi  
 PLOT DRIVER = batplotter.bat

FILE NAME = I:\10011001\_Phase II - 76F51\Cad\T\Plans\105.0876F51-sh1-1L3-xssht.dgn  
 USER NAME = jepettibone  
 PLOT SCALE = 20.0000' / in.  
 PLOT DATE = 10/4/2012 5:12:21 PM

DESIGNED -	REVISIED -
DRAWN -	REVISIED -
CHECKED -	REVISIED -
DATE -	REVISIED -

**STATE OF ILLINOIS  
 DEPARTMENT OF TRANSPORTATION**



**CROSS SECTIONS**  
 IL ROUTE 3  
 SCALE: 10H:5V  
 SHEET NO. 7 OF 30 SHEETS  
 STA. 1972+50.00 TO STA. 1973+00.00

F.A.U. RTE.	SECTION	COUNTY	TOTAL SHEETS	SHEET NO.
9234	68-R-1	MONROE	192	159
CONTRACT NO. 76F51				
ILLINOIS FED. AID PROJECT				