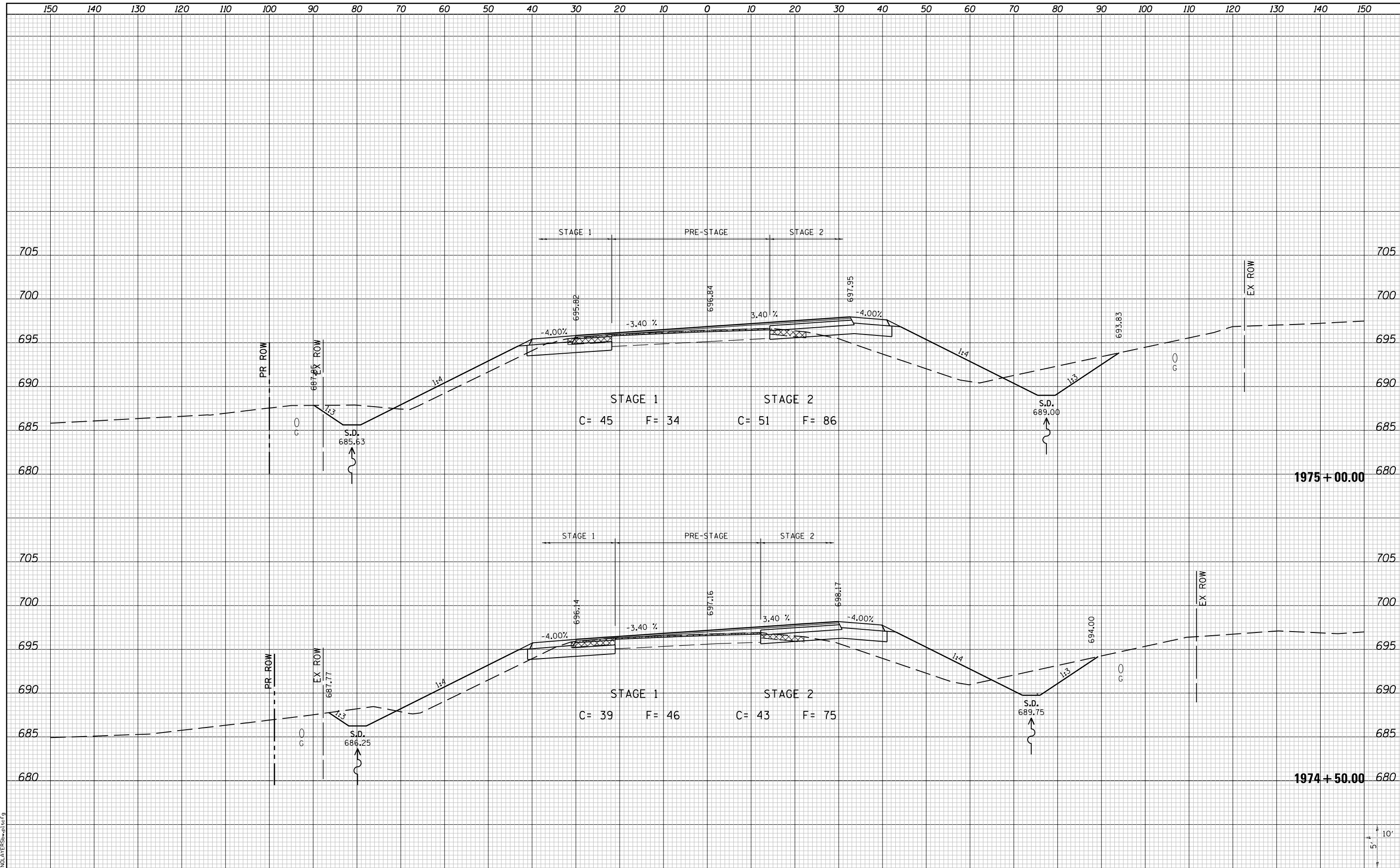


DATE	
BY	
SURVEYED	
PLOTTED	
TEMPLATE	
NOTE BOOK	
AREAS CHECKED	
NO.	

DATE	
BY	
SURVEYED	
PLOTTED	
TEMPLATE	
NOTE BOOK	
AREAS CHECKED	
NO.	



LAST SAVED = 10/4/2012
 PEN TABLE = 181-H&I-F&E
 PLOT DRIVER = PdfPlotterServer.bat

FILE NAME = I:\10011001_Phase II - 76F5\N\Cad\T\Plans\105_0876F51-sh1-IL3-xssht.dgn	USER NAME = jepettibone	DESIGNED -	REVISED -
		DRAWN -	REVISED -
		CHECKED -	REVISED -
		DATE -	REVISED -
PLOT SCALE = 20.0000' / in.			
PLOT DATE = 10/4/2012 5:12:23 PM			

**STATE OF ILLINOIS
 DEPARTMENT OF TRANSPORTATION**



CROSS SECTIONS
 IL ROUTE 3

SCALE: 10H:5V SHEET NO. 9 OF 30 SHEETS STA. 1974+50.00 TO STA. 1975+00.00

F.A.U. RTE.	SECTION	COUNTY	TOTAL SHEETS	SHEET NO.
9234	68-R-1	MONROE	192	161
CONTRACT NO. 76F51			ILLINOIS FED. AID PROJECT	