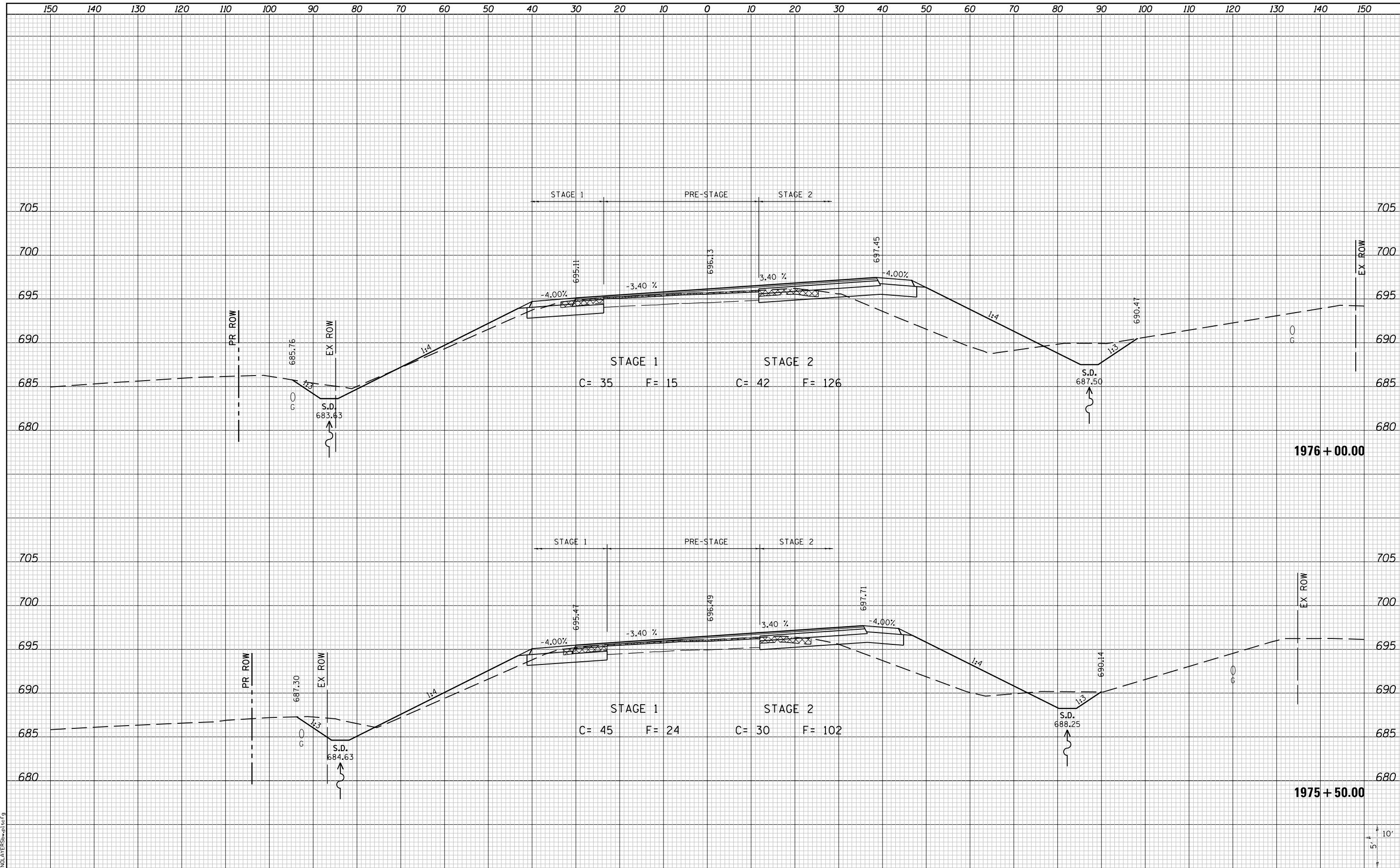


DATE	
BY	
SURVEYED	
PLOTTED	
TEMPLATE	
NOTE BOOK	
AREAS CHECKED	
NO.	

DATE	
BY	
SURVEYED	
PLOTTED	
TEMPLATE	
NOTE BOOK	
AREAS CHECKED	
NO.	



LAST SAVED = 10/4/2012  
 PEN TABLE = VBI-H&P.rdl  
 PLOT DRIVER = B:\PLOTTERS\pwtcf9

FILE NAME = I:\10011001\Phase II - 76F5\IN\Cad\T\Plans\105_0876F51-sh1-IL3-xssh1.dgn	USER NAME = jepettibone	DESIGNED -	REVISED -
PLOT SCALE = 20.0000' / in.		DRAWN -	REVISED -
PLOT DATE = 10/4/2012 5:12:24 PM		CHECKED -	REVISED -
		DATE -	REVISED -

**STATE OF ILLINOIS  
 DEPARTMENT OF TRANSPORTATION**



**CROSS SECTIONS  
 IL ROUTE 3**

SCALE: 10H:5V SHEET NO. 10 OF 30 SHEETS STA. 1975+50.00 TO STA. 1976+00.00

F.A.U. RTE.	SECTION	COUNTY	TOTAL SHEETS	SHEET NO.
9234	68-R-1	MONROE	192	162
CONTRACT NO. 76F51			ILLINOIS FED. AID PROJECT	