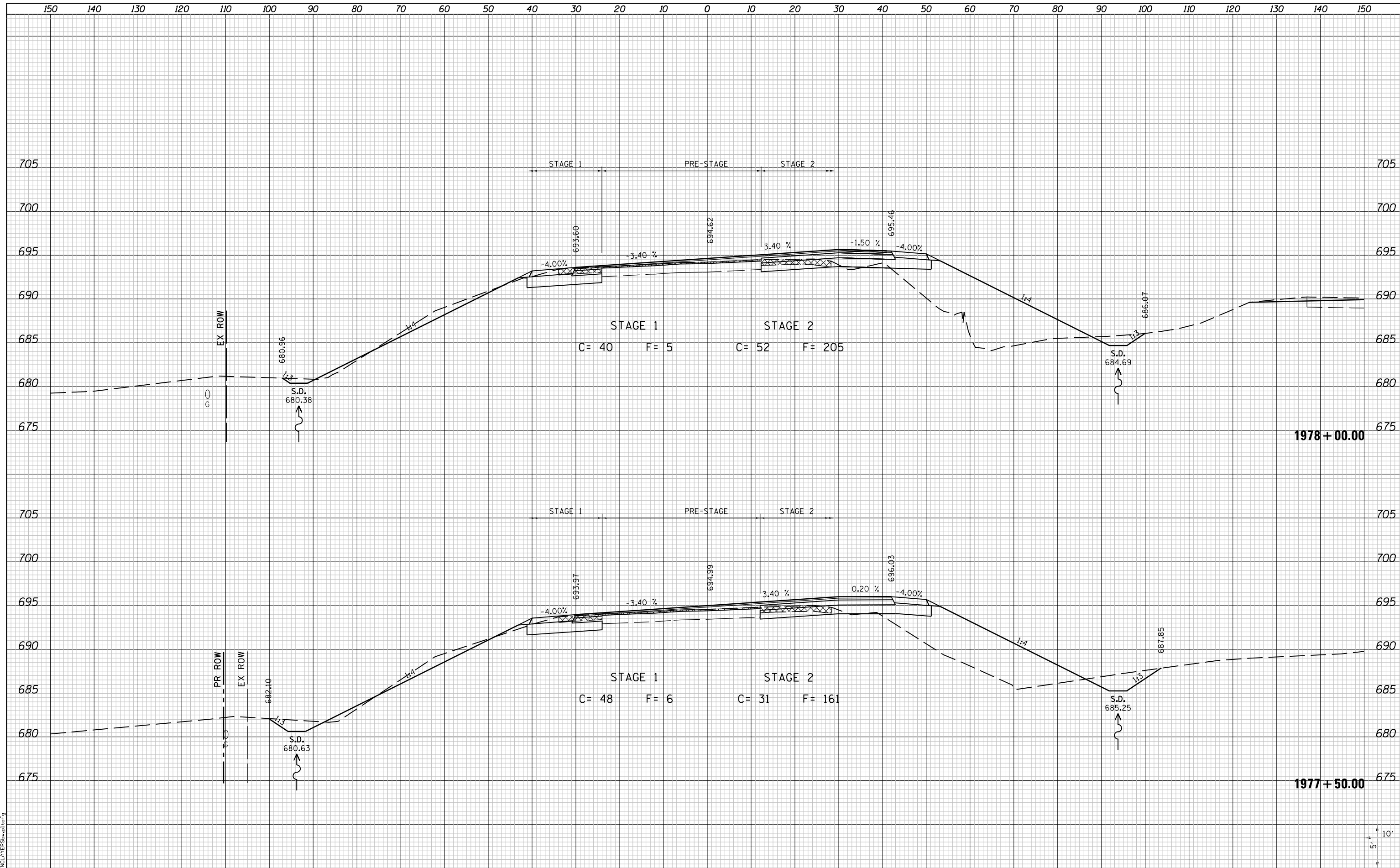


DATE	
BY	
SURVEYED	
PLOTTED	
TEMPLATE	
AREAS	
CHECKED	
FINAL SURVEY	
NOTE BOOK	
NO.	

DATE	
BY	
SURVEYED	
PLOTTED	
TEMPLATE	
AREAS	
CHECKED	
ORIGINAL SURVEY	
NOTE BOOK	
NO.	



LAST SAVED = 10/4/2012
 PEN TABLE = VBI-HA17.rdi
 PLOT DRIVER = PdfPlotterSpw.bat

FILE NAME =	I:\10011001_Phase II - 76F5\N\Cad\T\Plans\105_0876F51-sh1-IL3-xssht.dgn
USER NAME =	jepettibone
DESIGNED -	REVISIED -
DRAWN -	REVISIED -
CHECKED -	REVISIED -
DATE -	REVISIED -
PLOT SCALE =	20.0000" / in.
PLOT DATE =	10/4/2012 5:12:26 PM

STATE OF ILLINOIS
 DEPARTMENT OF TRANSPORTATION



CROSS SECTIONS
 IL ROUTE 3

SCALE: 10H:5V SHEET NO. 12 OF 30 SHEETS STA. 1977+50.00 TO STA. 1978+00.00

F.A.U. RTE.	SECTION	COUNTY	TOTAL SHEETS	SHEET NO.
9234	68-R-1	MONROE	192	164
				CONTRACT NO. 76F51
ILLINOIS FED. AID PROJECT				