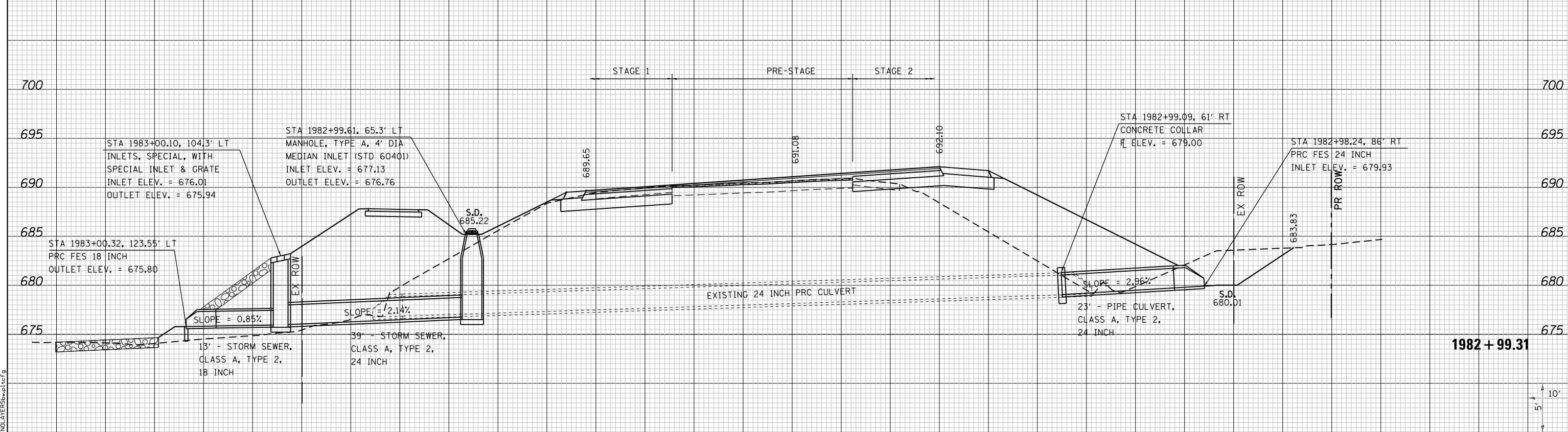
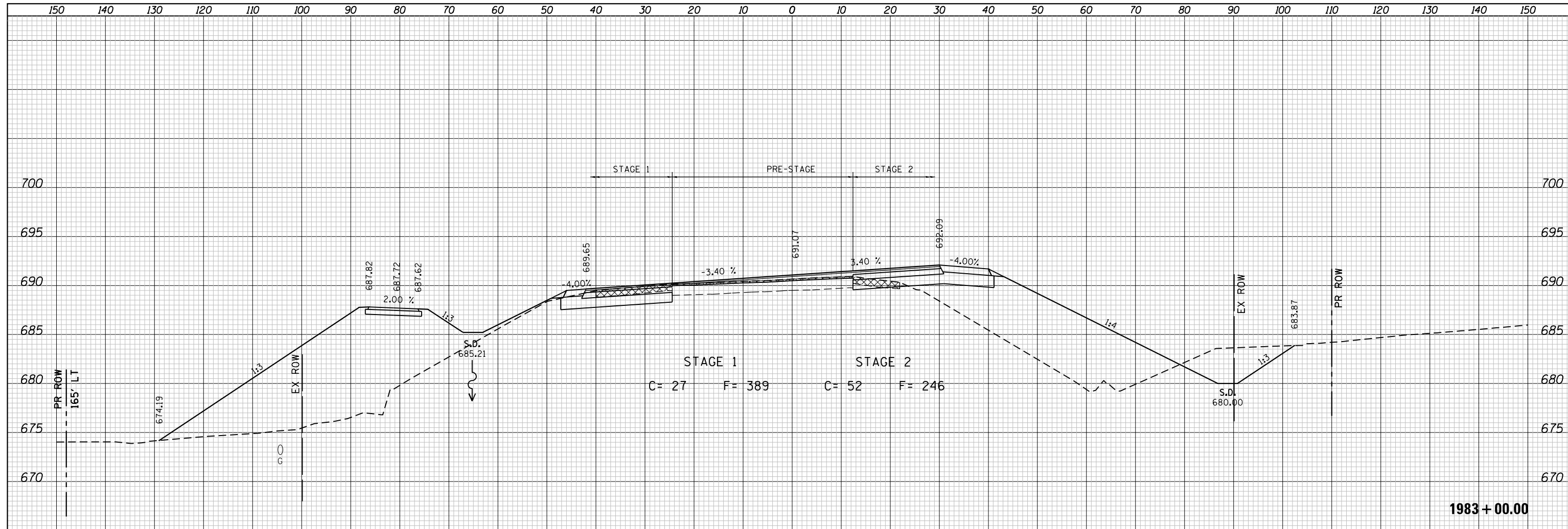


DATE	
BY	
SURVEYED	
PLOTTED	
TEMPLATE	
NOTE BOOK	
AREAS CHECKED	
NO.	

DATE	
BY	
SURVEYED	
PLOTTED	
TEMPLATE	
NOTE BOOK	
AREAS CHECKED	
NO.	



LAST SAVED = 10/08/2012  
 PEN TABLE = VBI-HA17.rdi  
 PLOT DRIVER = PdfPlotterSpw.batcf9

FILE NAME =	USER NAME = jepettibone	DESIGNED -	REVISED -
I:\10011001_Phase II - 76F5\IN\Cad\T\Plans\105.0876F51-sh1-IL3-xssh.dgn		DRAWN -	REVISED -
		CHECKED -	REVISED -
		DATE -	REVISED -
PLOT SCALE = 20.0000' / in.			
PLOT DATE = 10/10/2012 2:46:27 PM			

**STATE OF ILLINOIS  
 DEPARTMENT OF TRANSPORTATION**



SCALE: 10H:5V

**CROSS SECTIONS  
 IL ROUTE 3**

SHEET NO. 18 OF 30 SHEETS  
 STA. 1982+99.31 TO STA. 1983+00.00

F.A.U. RTE.	SECTION	COUNTY	TOTAL SHEETS	SHEET NO.
9234	68-R-1	MONROE	192	170
				CONTRACT NO. 76F51
ILLINOIS FED. AID PROJECT				