

COORDINATE TABLES

Table with columns: POINT, CURVE, STATION, NORTHING, EASTING. Rows for NB I-55 curve data.

RAMP 55S70W

Table with columns: POINT, CURVE, STATION, NORTHING, EASTING. Rows for RAMP 55S70W data.

COORDINATE TABLES

Table with columns: POINT, CURVE, STATION, NORTHING, EASTING. Rows for SB I-55 curve data.

RAMP 55S64E

Table with columns: POINT, CURVE, STATION, NORTHING, EASTING. Rows for RAMP 55S64E data.

COORDINATE TABLES

Table with columns: POINT, CURVE, STATION, NORTHING, EASTING. Rows for RAMP O data.

RAMP P

Table with columns: POINT, CURVE, STATION, NORTHING, EASTING. Rows for RAMP P data.

RAMP A

Table with columns: POINT, CURVE, STATION, NORTHING, EASTING. Rows for RAMP A data.

COORDINATE TABLES

Table with columns: POINT, CURVE, STATION, NORTHING, EASTING. Rows for RAMP 70E55N data.

RAMP 64W55N

Table with columns: POINT, CURVE, STATION, NORTHING, EASTING. Rows for RAMP 64W55N data.

EXCHANGE AVENUE

Table with columns: POINT, CURVE, STATION, NORTHING, EASTING. Rows for EXCHANGE AVENUE data.

PROP. CURVE 55S-1
PI STA. = 64+62.70
Delta = 0° 19' 12" (RT)
D = 0° 04' 19"
R = 79,694.32'

PROP. CURVE 55S-5
PI STA. = 93+80.20
Delta = 30° 29' 46" (LT)
D = 6° 28' 13"
R = 885.51'

PROP. CURVE 55N-1
PI STA. = 51+92.01
Delta = 10° 37' 43" (RT)
D = 2° 46' 32"
R = 2,064.27'

PROP. CURVE 55N-3
PI STA. = 79+77.22
Delta = 11° 19' 26" (LT)
D = 3° 10' 59"
R = 1,800.00'

PROP. CURVE 55S-2
PI STA. = 71+51.26
Delta = 19° 05' 52" (RT)
D = 3° 16' 27"
R = 1,750.00'

PROP. CURVE 55S-6
PI STA. = 97+85.47
Delta = 15° 22' 19" (LT)
D = 4° 24' 36"
R = 1,299.24'

PROP. CURVE 55N-2
PI STA. = 62+39.34
Delta = 10° 09' 06" (LT)
D = 1° 50' 43"
R = 3,105.00'

PROP. CURVE 55N-4
PI STA. = 84+69.84
Delta = 18° 50' 46" (LT)
D = 2° 43' 42"
R = 1,900.00'

PROP. CURVE 55S-3
PI STA. = 78+46.09
Delta = 24° 21' 42" (RT)
D = 3° 02' 49"
R = 1,880.42'

PROP. CURVE 55S64E-1
PI STA. = 11+75.03
Delta = 11° 36' 29" (RT)
D = 4° 24' 36"
R = 3,007.76'

PROP. CURVE 55N-5
PI STA. = 89+19.86
Delta = 7° 38' 56" (LT)
D = 2° 43' 42"
R = 2,100.00'

PROP. CURVE 55S-4
PI STA. = 85+55.05
Delta = 27° 16' 06" (RT)
D = 4° 24' 27"
R = 1,300.00'

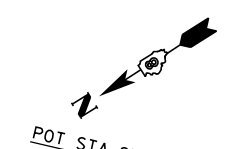
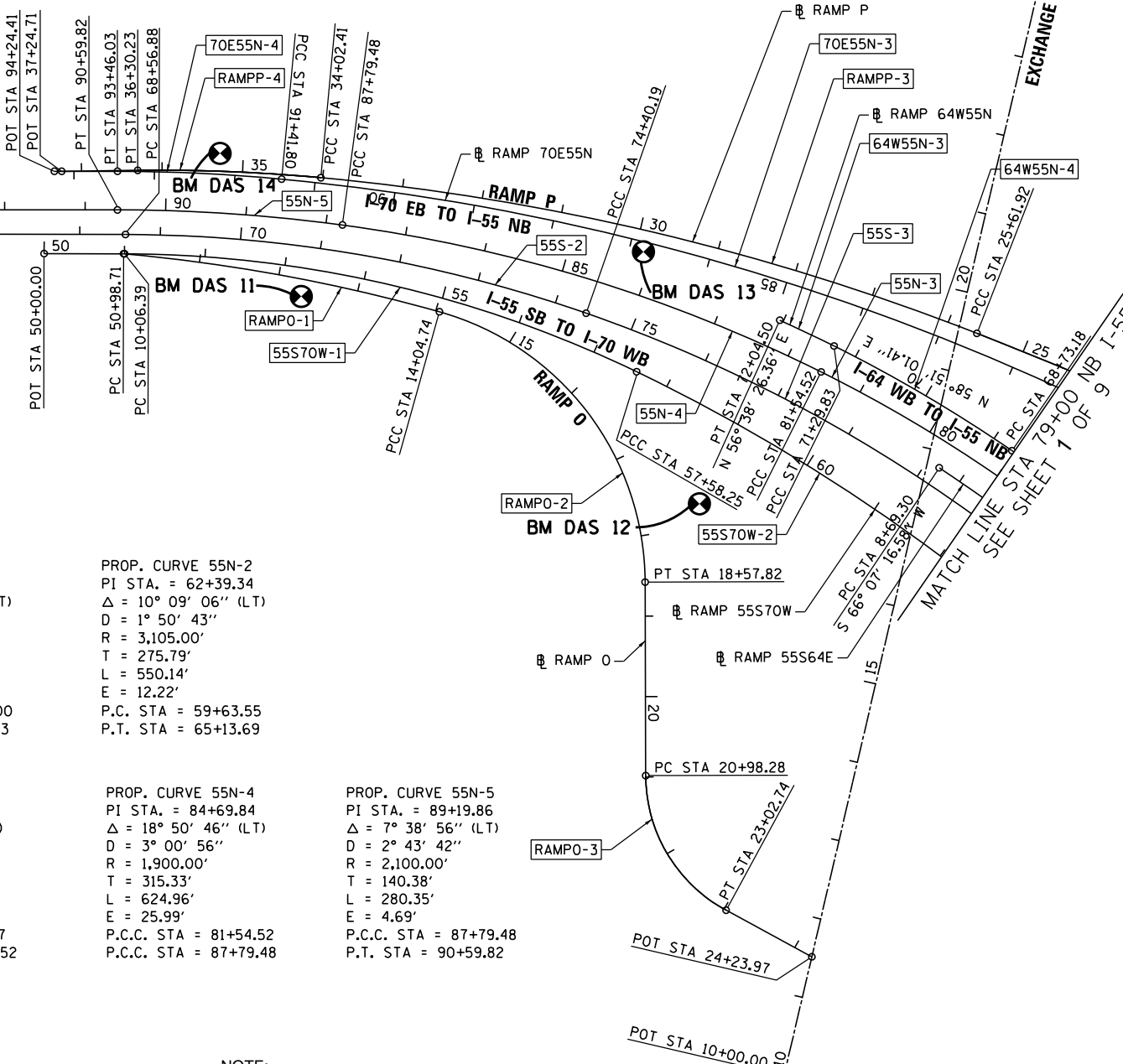
PROP. CURVE 55S64E-2
PI STA. = 22+26.88
Delta = 120° 51' 16" (LT)
D = 20° 06' 14"
R = 285.00'

PROP. CURVE 55N-6
PI STA. = 59+63.55
Delta = 10° 09' 06" (LT)
D = 1° 50' 43"
R = 3,105.00'

PROP. CURVE 55N-7
PI STA. = 87+79.48
Delta = 7° 38' 56" (LT)
D = 2° 43' 42"
R = 2,100.00'

POT STA 109+06.78

POT STA 50+00.00



* THREE-POINT TIE SET FOR THIS POINT

NOTE: INFORMATION ON THIS SHEET FROM CONTRACT 76C52



FILE NAME = DBTRI-76C52-sht-ATB-03.dgn

USER NAME = searab
DESIGNED OP
DRAWN OP
CHECKED DBM
DATE 1-20-12

REVISED -
REVISED -
REVISED -
REVISED -

STATE OF ILLINOIS DEPARTMENT OF TRANSPORTATION

ALIGNMENT, TIES AND BENCHMARKS

SCALE: 1"=100' SHEET NO. 3 OF 9 SHEETS STA. TO STA.

Table with columns: F.A.I R.T.E., SECTION, COUNTY, ST. CLAIR, TOTAL SHEETS, SHEET NO., CONTRACT NO. 76F71, FED. ROAD DIST. NO., ILLINOIS FED. AID PROJECT